

**MEMAHAMI  
ALAT REPRODUKSI  
SEBAGAI SUNNATULLAH**

♀  
**XX**

♂  
**XY**



**X**

**X**

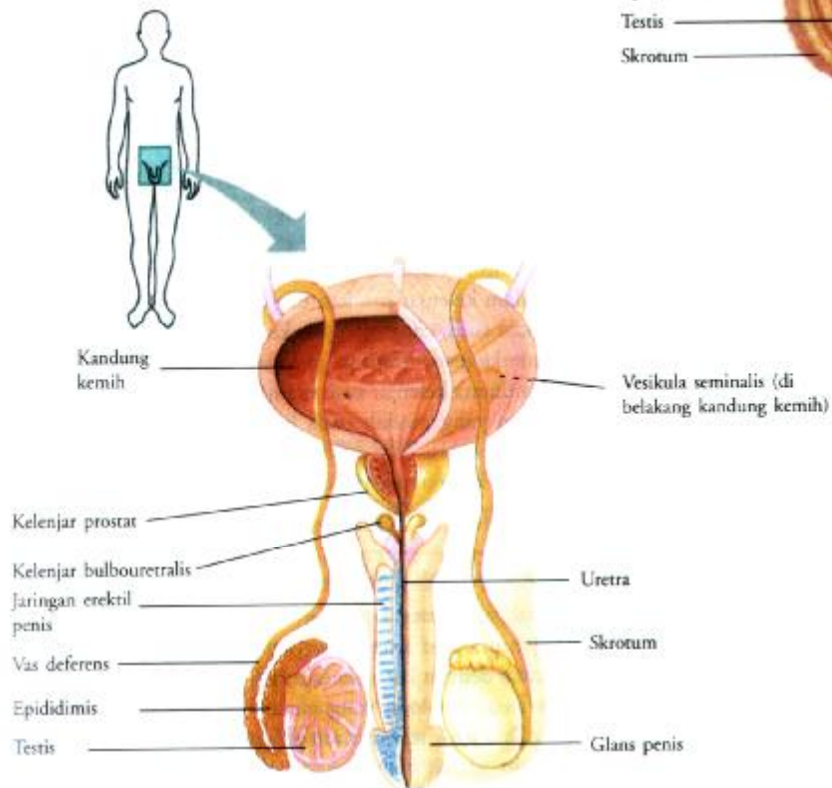
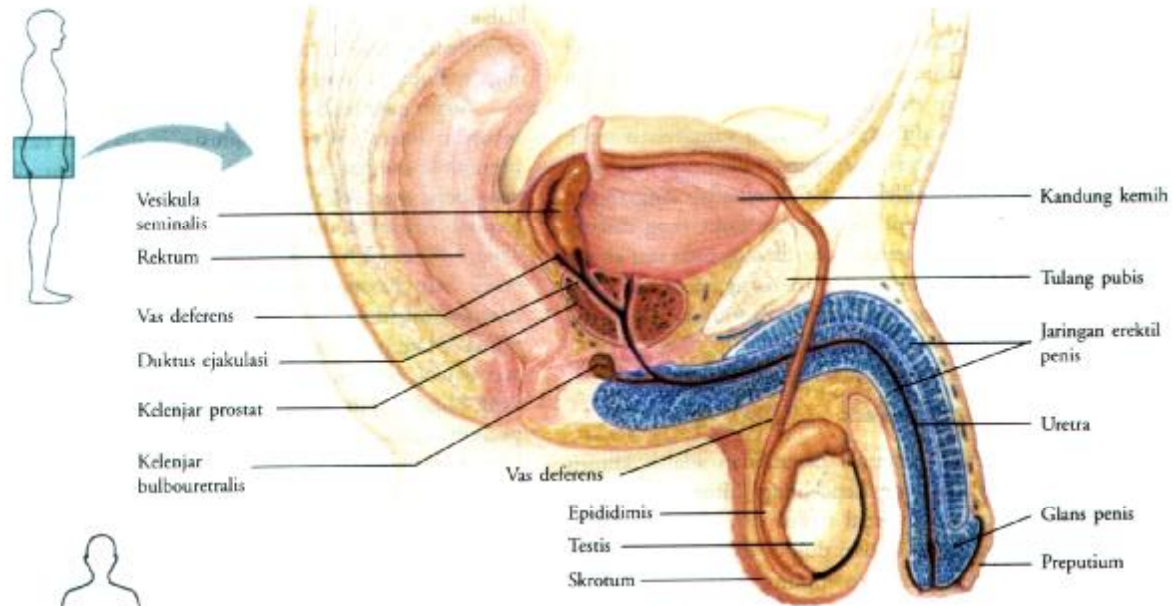
**X**

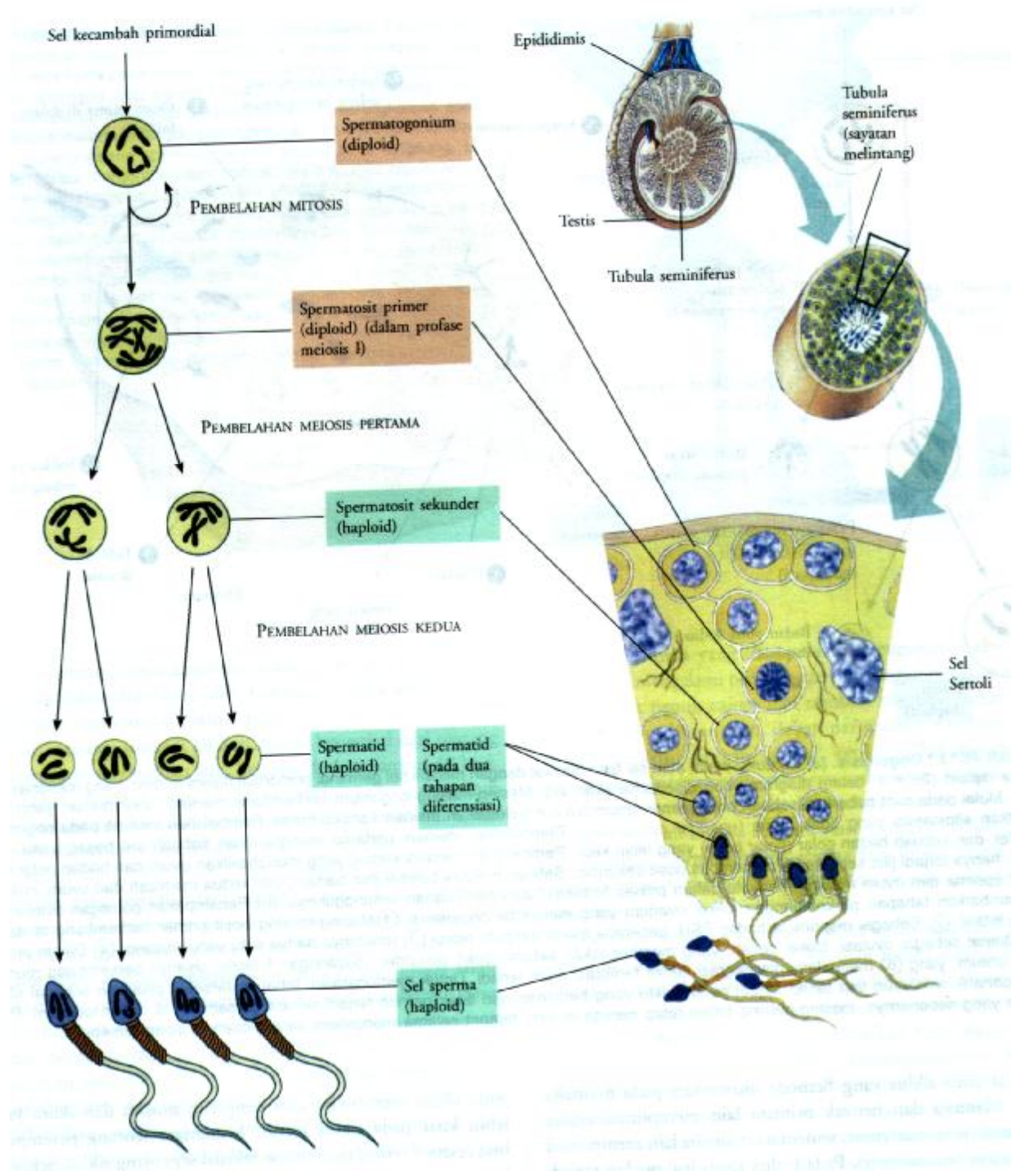
**Y**



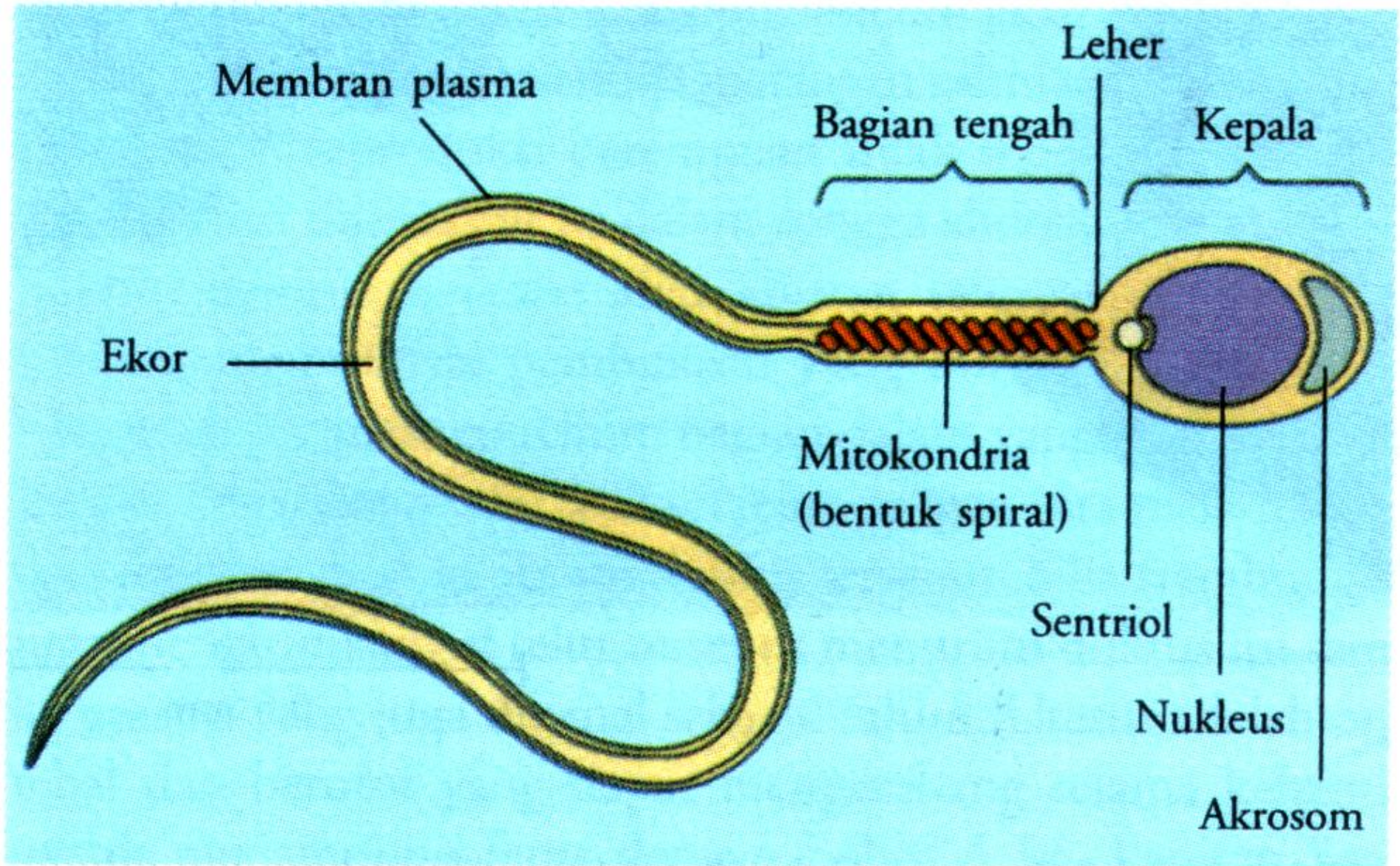
**XX**

**XY**

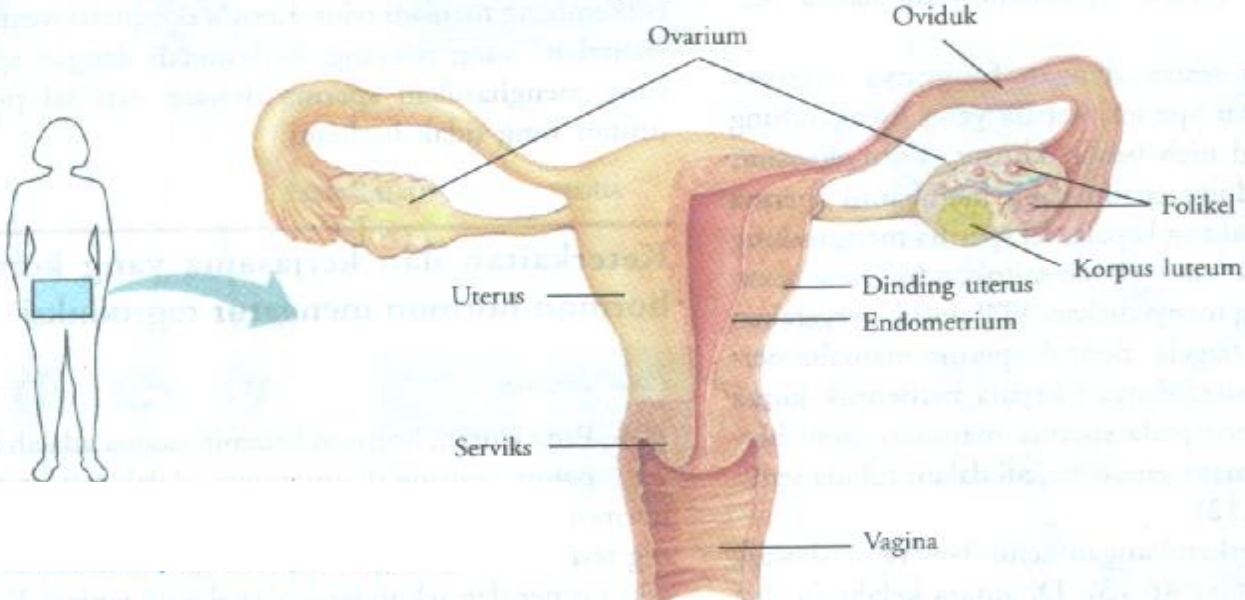
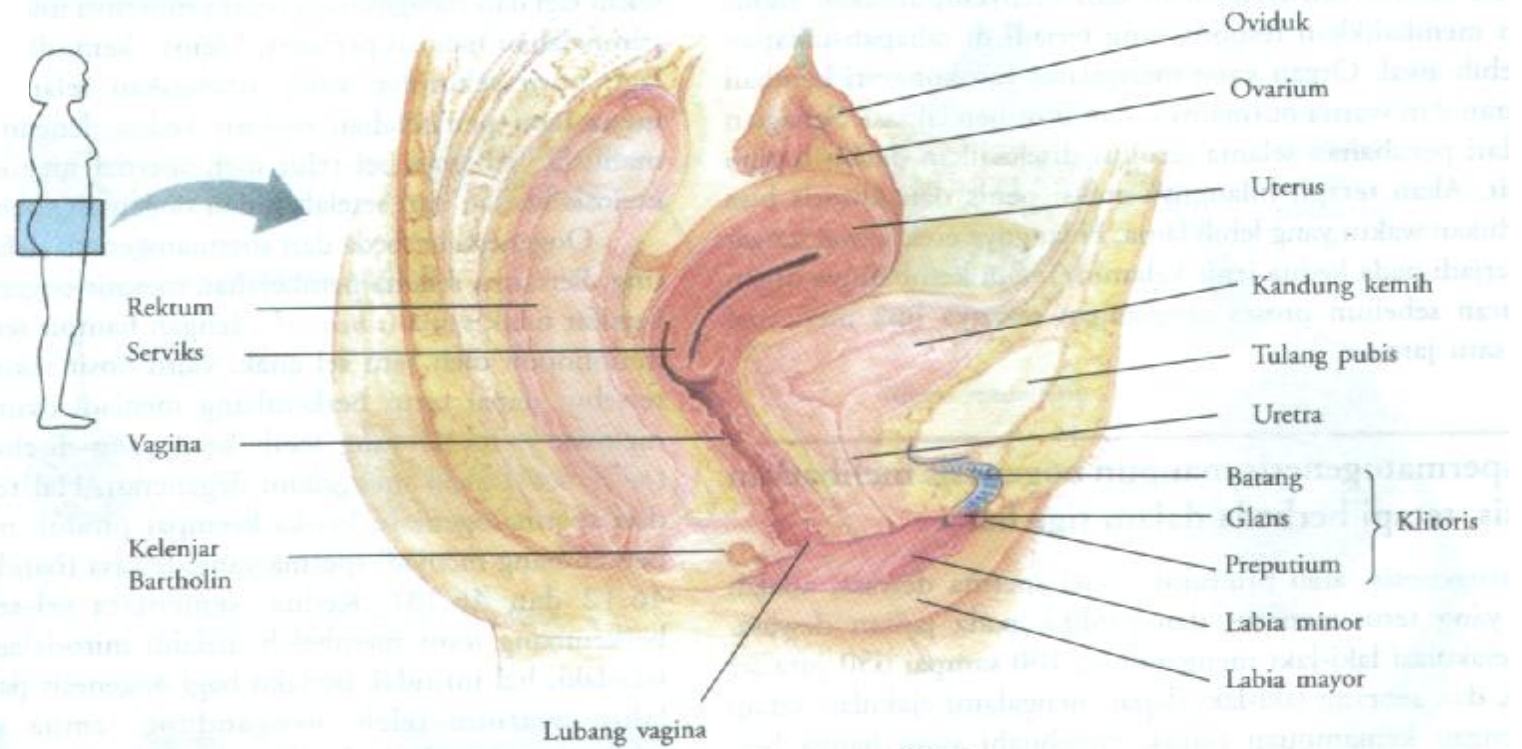


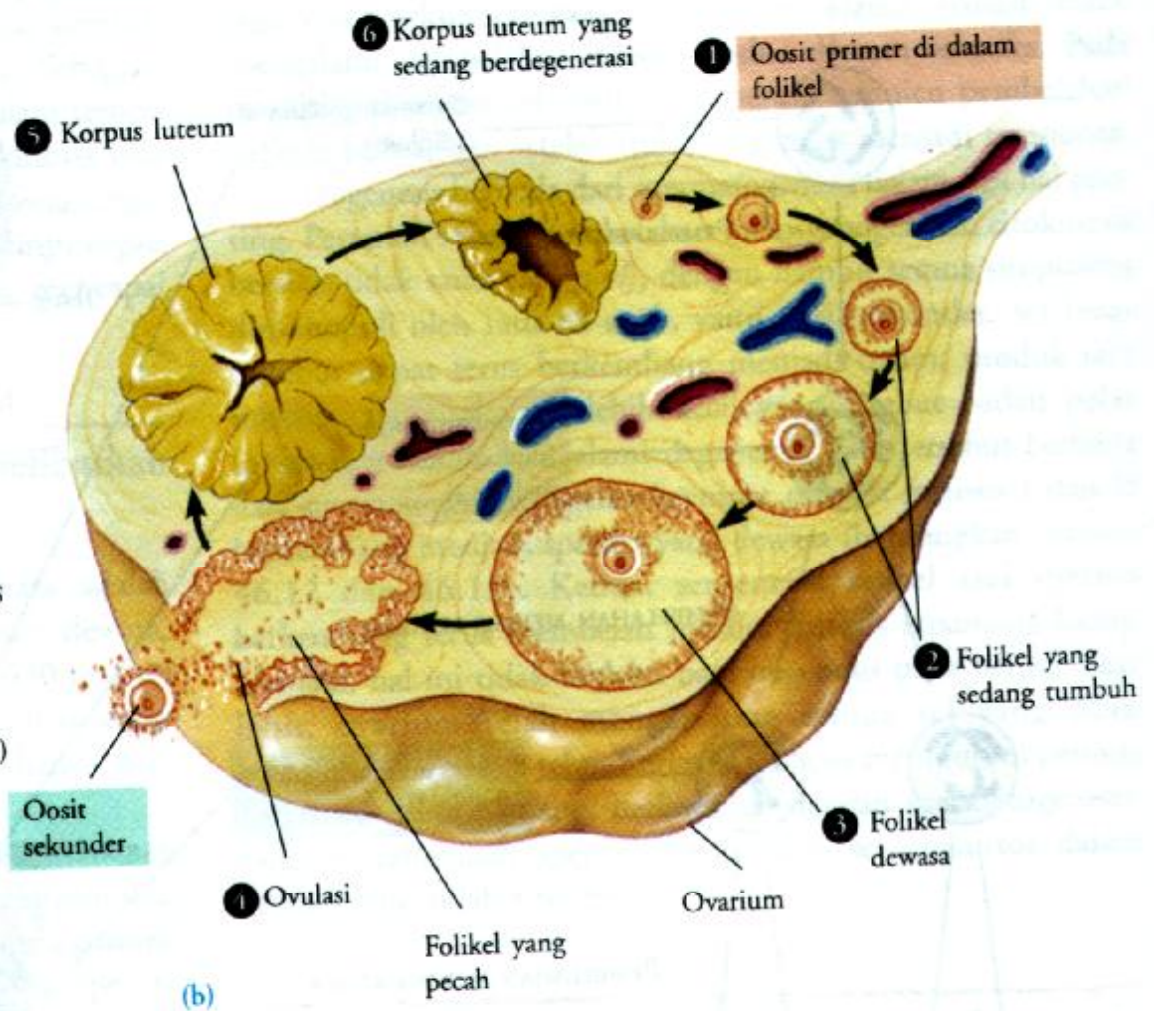
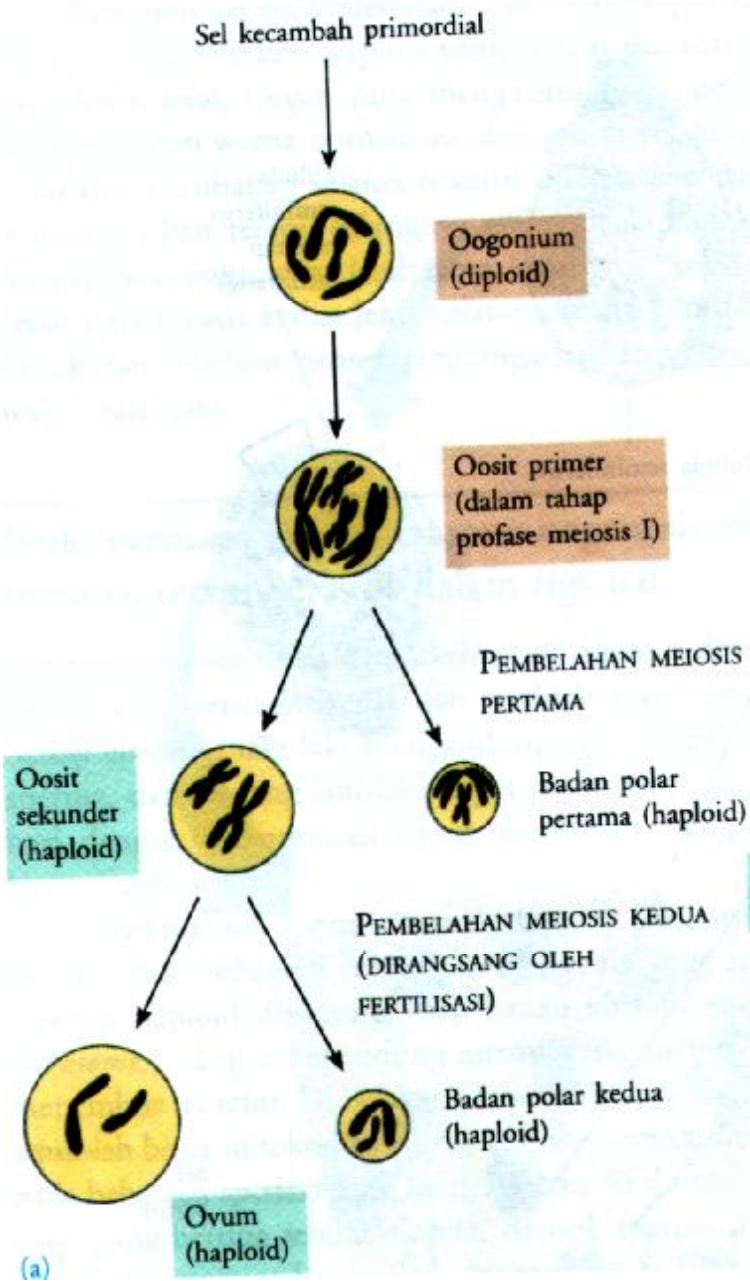




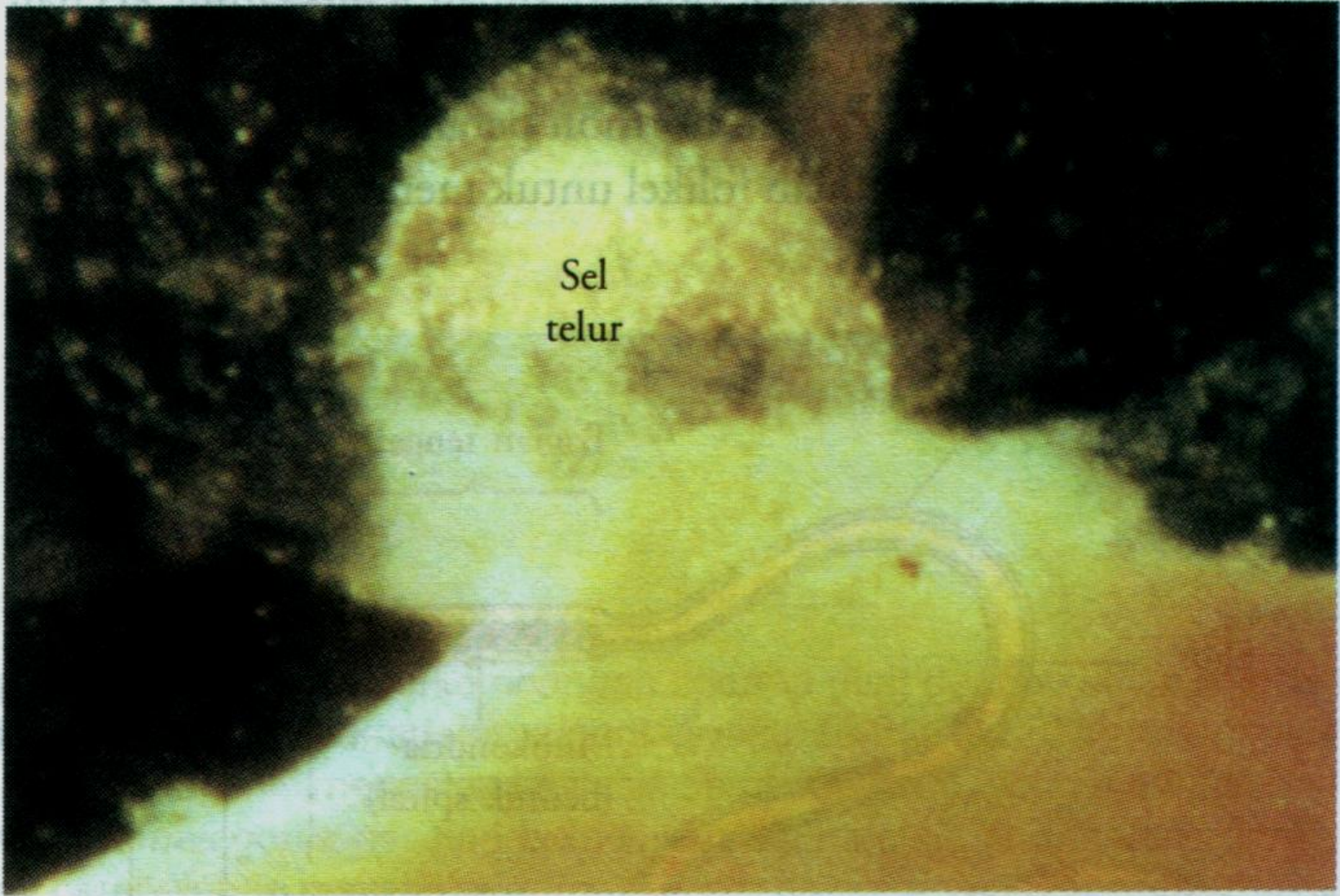








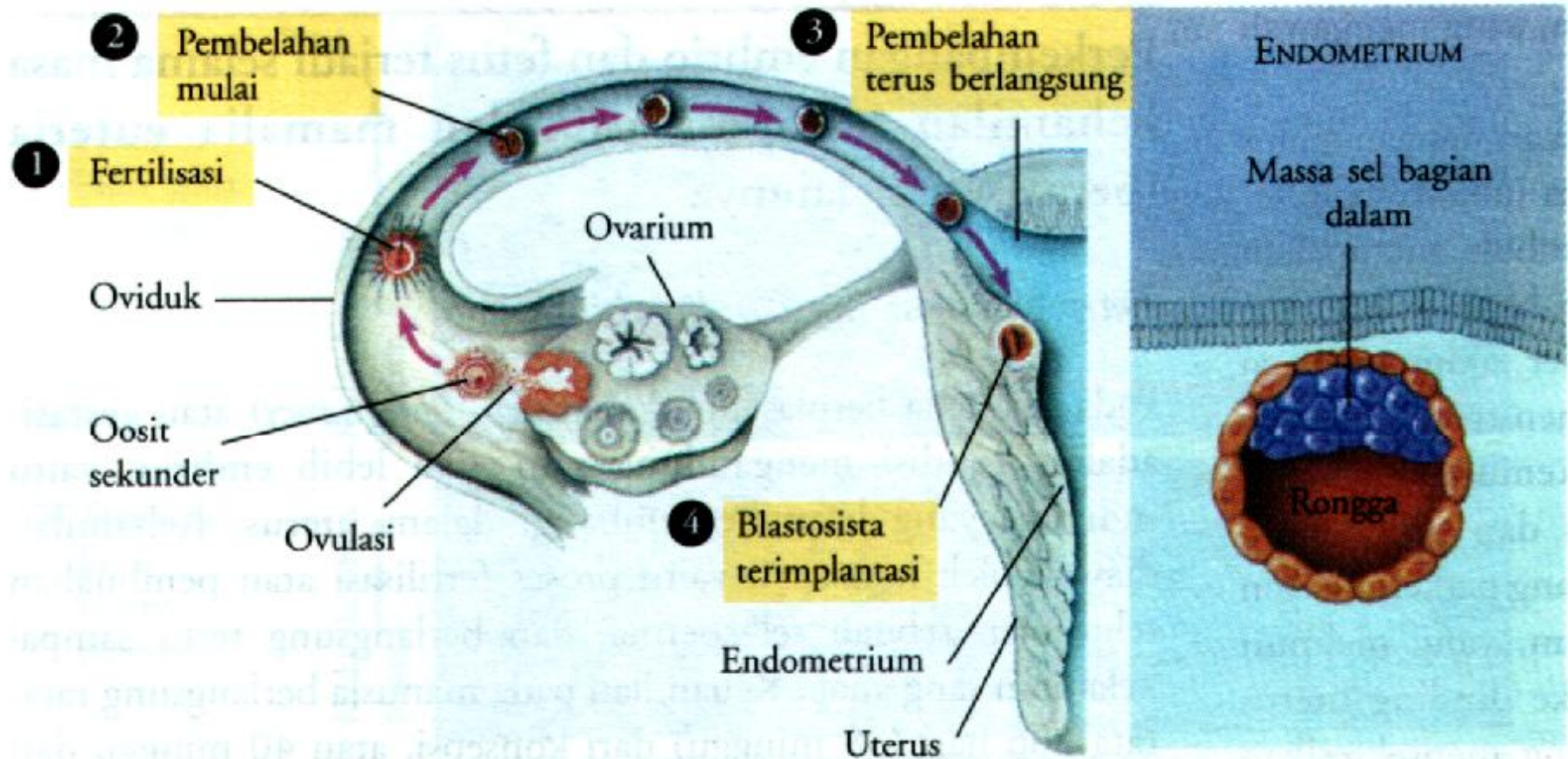




Sel  
telur

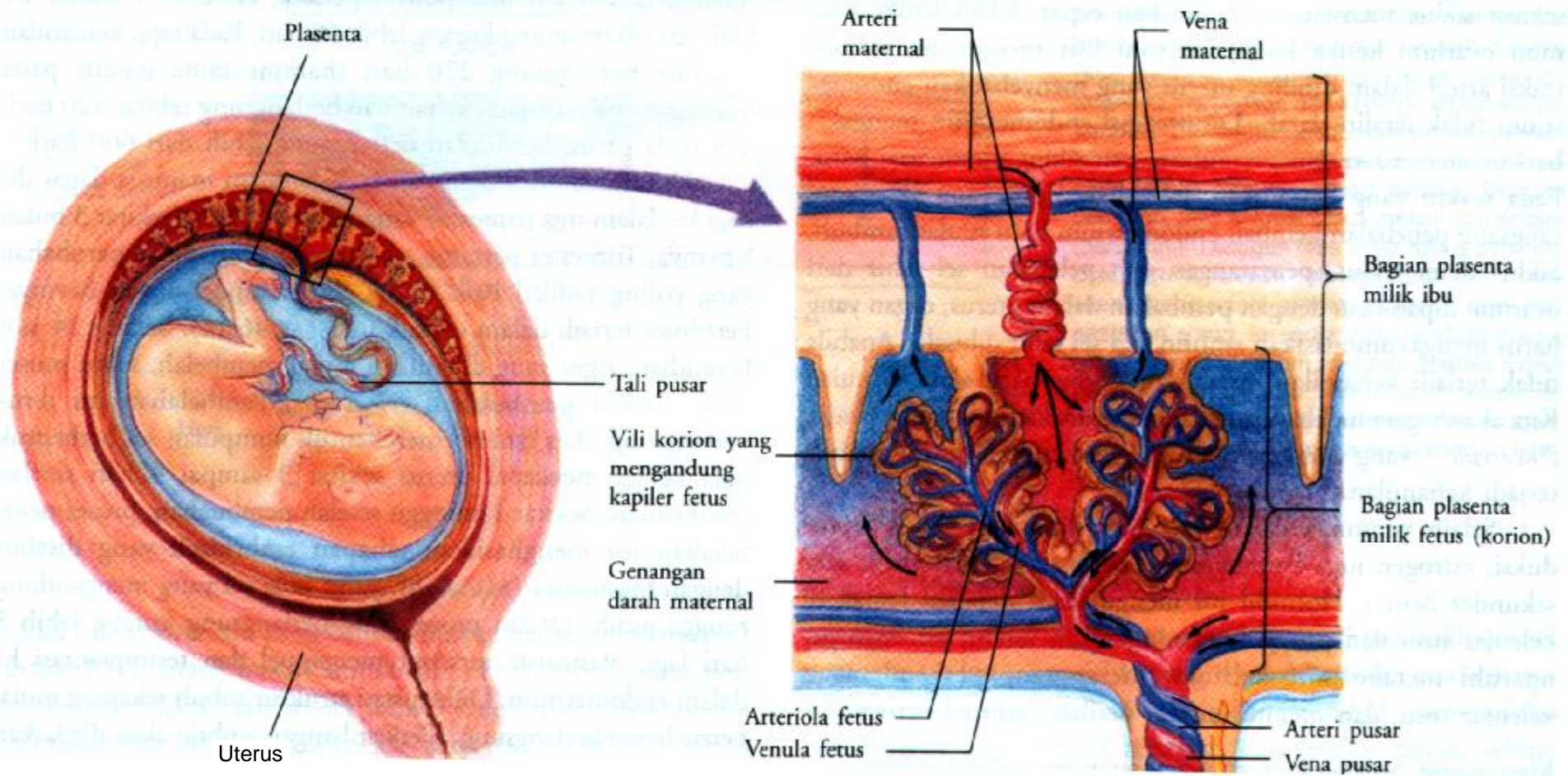
0,5 mm





(a) Dari ovulasi sampai ke implantasi

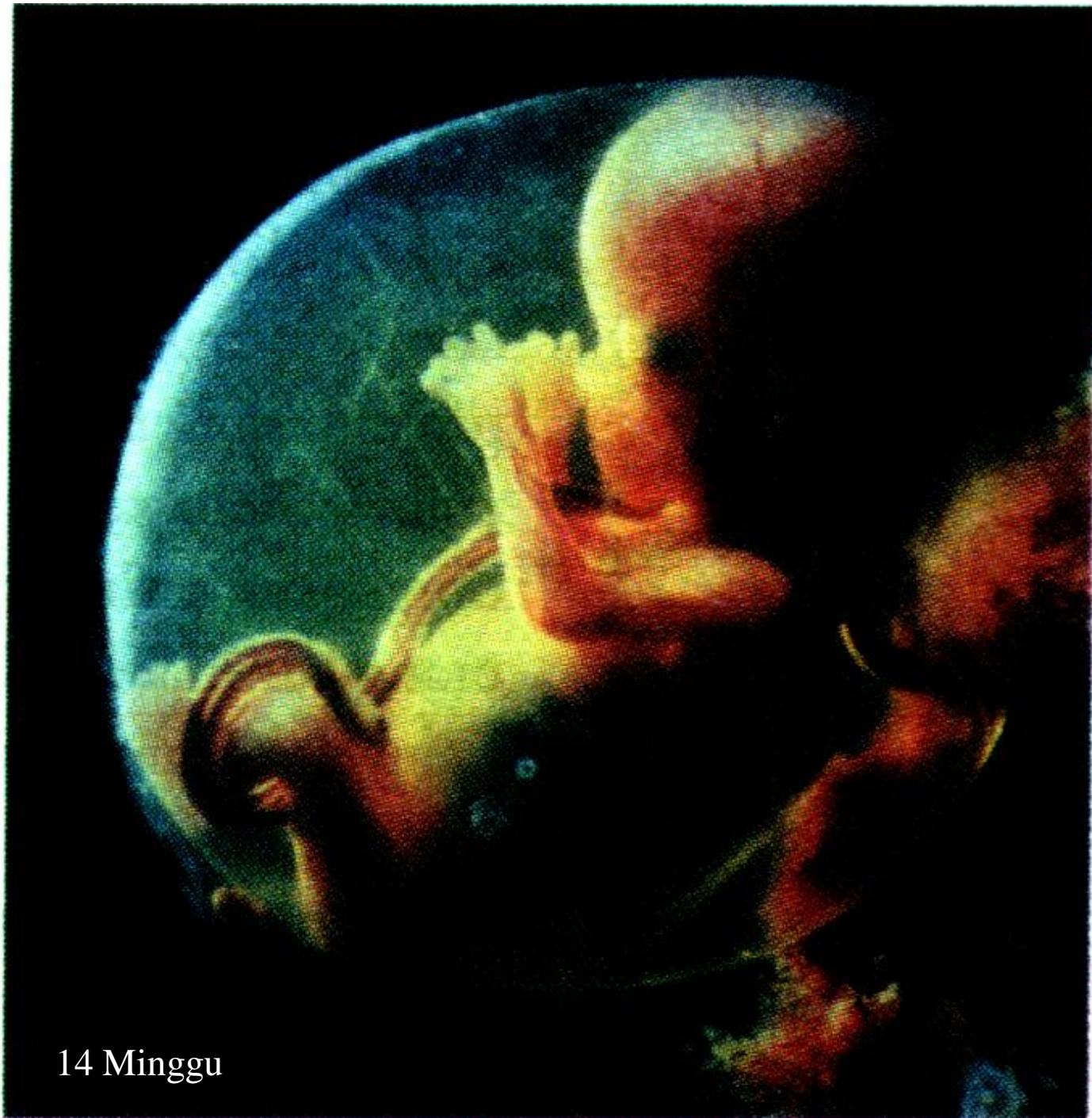
(b) Blastosista (6 hari setelah fertilisasi)







5 Minggu

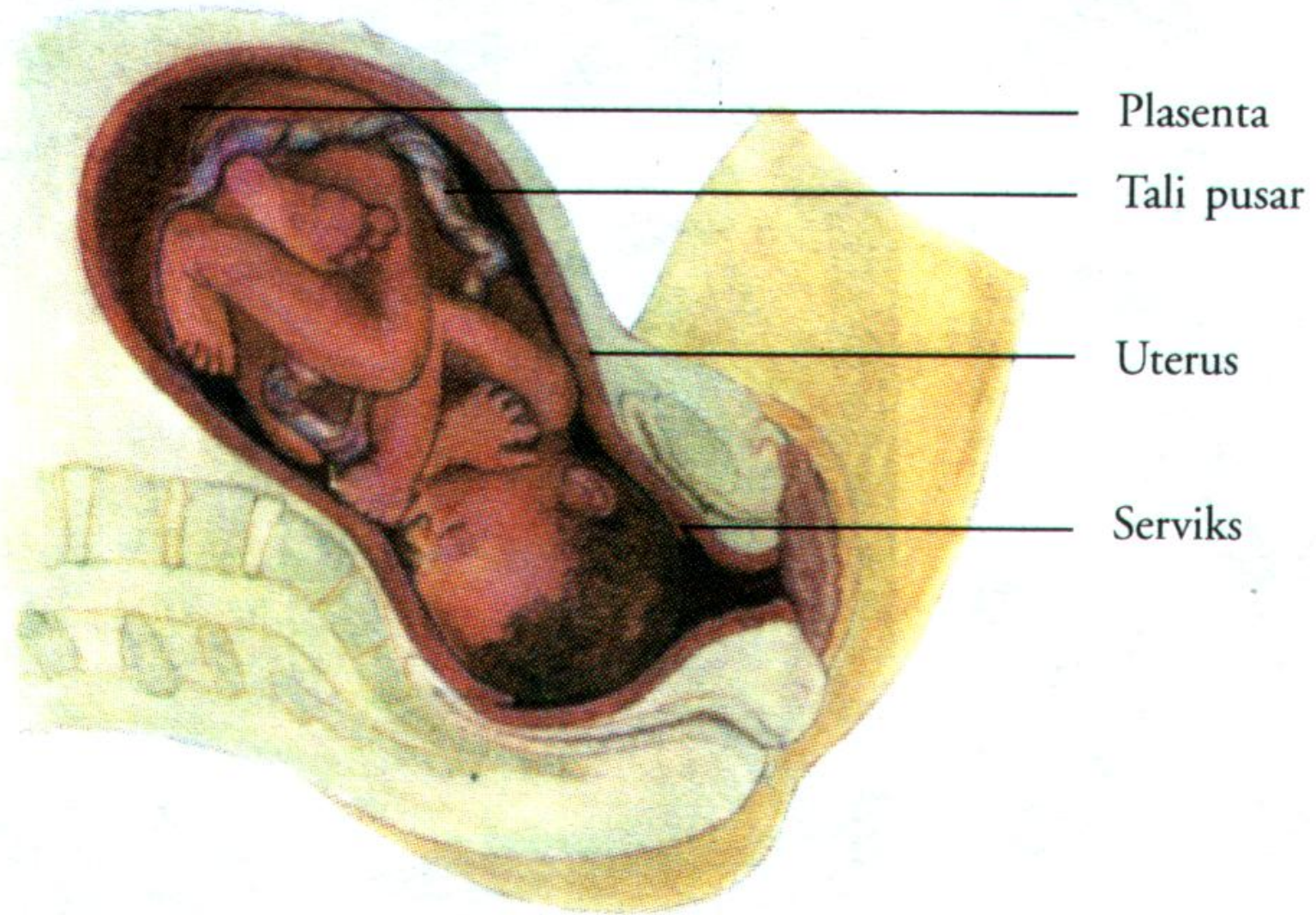


14 Minggu





20 Minggu

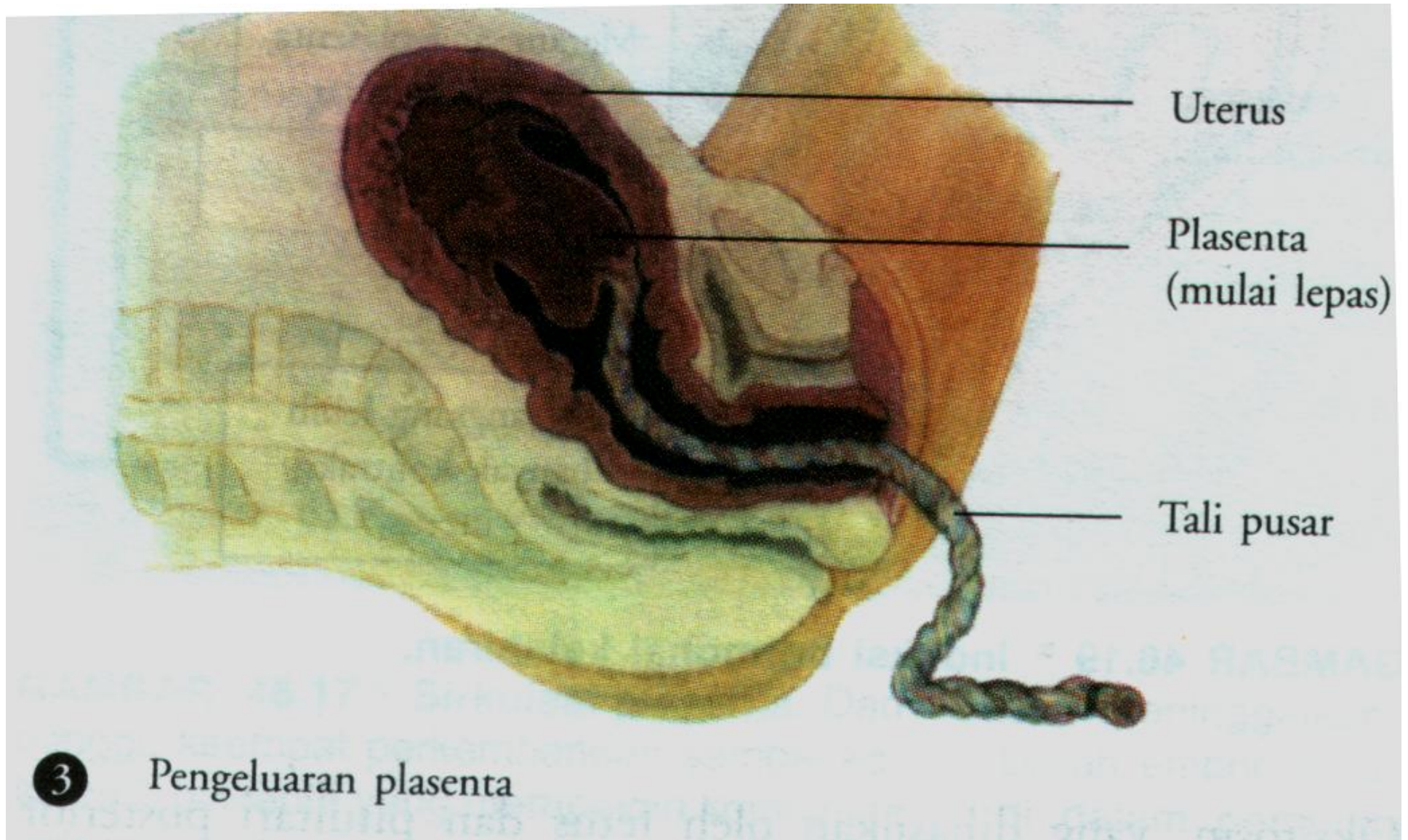


1 Dilatasi serviks



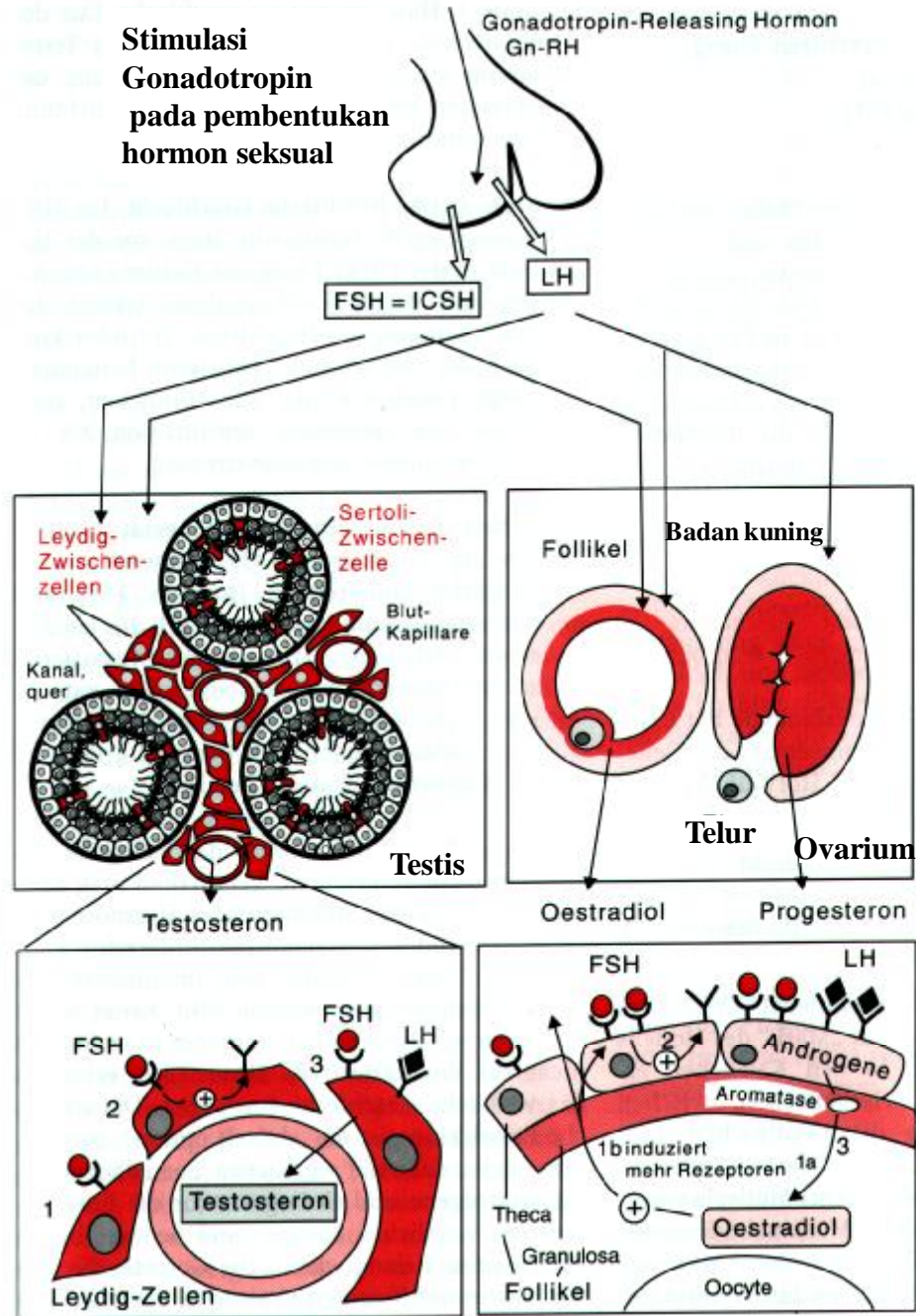


2 Ekspulsi: bayi mulai dikeluarkan





**Stimulasi  
Gonadotropin  
pada pembentukan  
hormon seksual**



### Pengaturan siklus menstruasi

GnRH = Gonadotropin-releasing Hormone

