

BELALANG

SUHARA

JURUSAN PENDIDIKAN BIOLOGI UPI



Mata majemuk (Facet) yang besar pada Capung



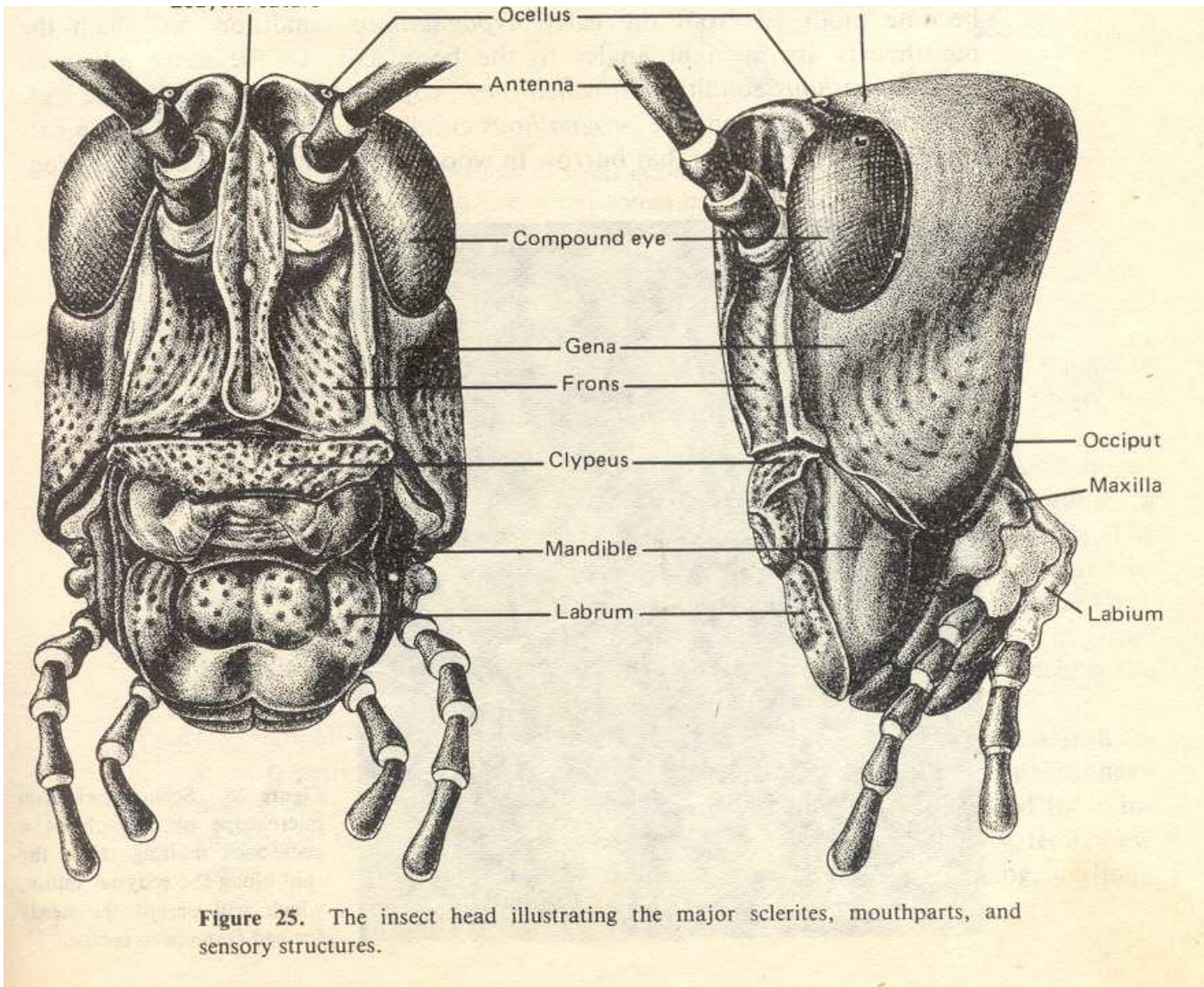


Figure 25. The insect head illustrating the major sclerites, mouthparts, and sensory structures.

Solitary



Gregarious





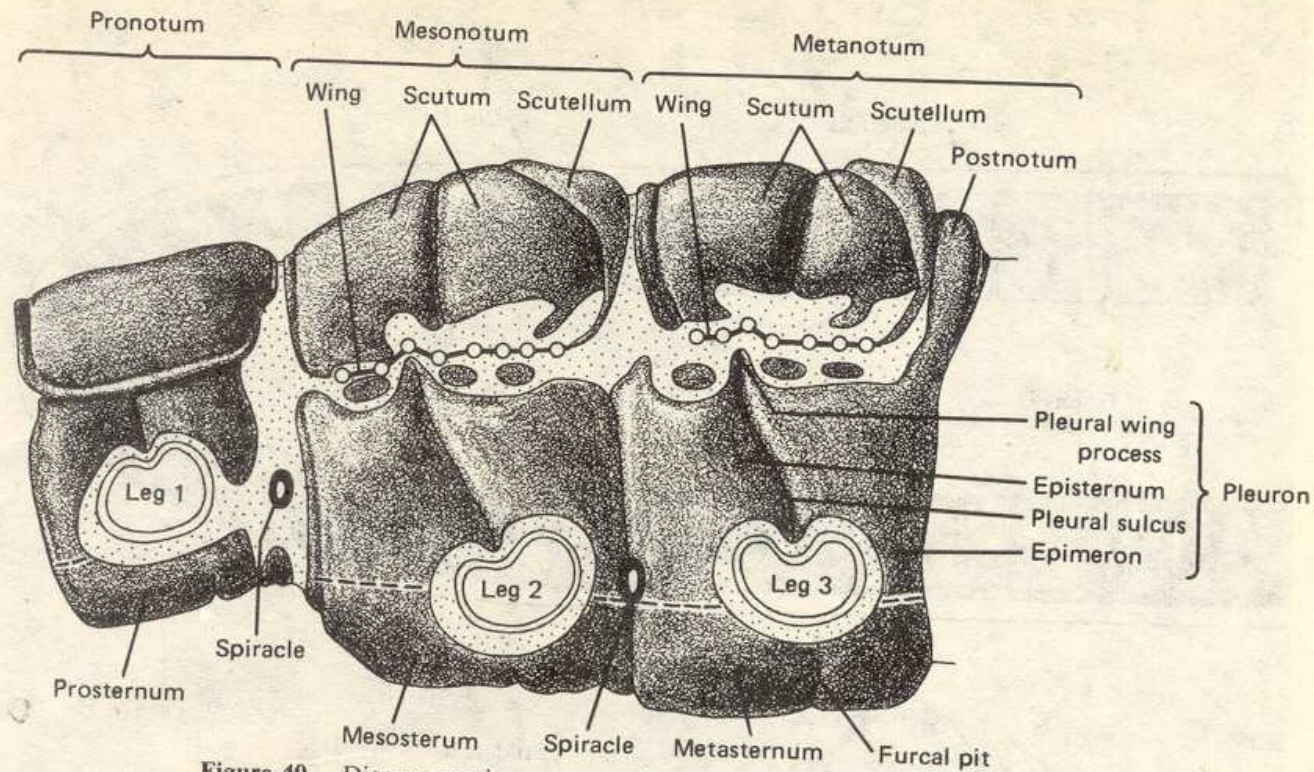
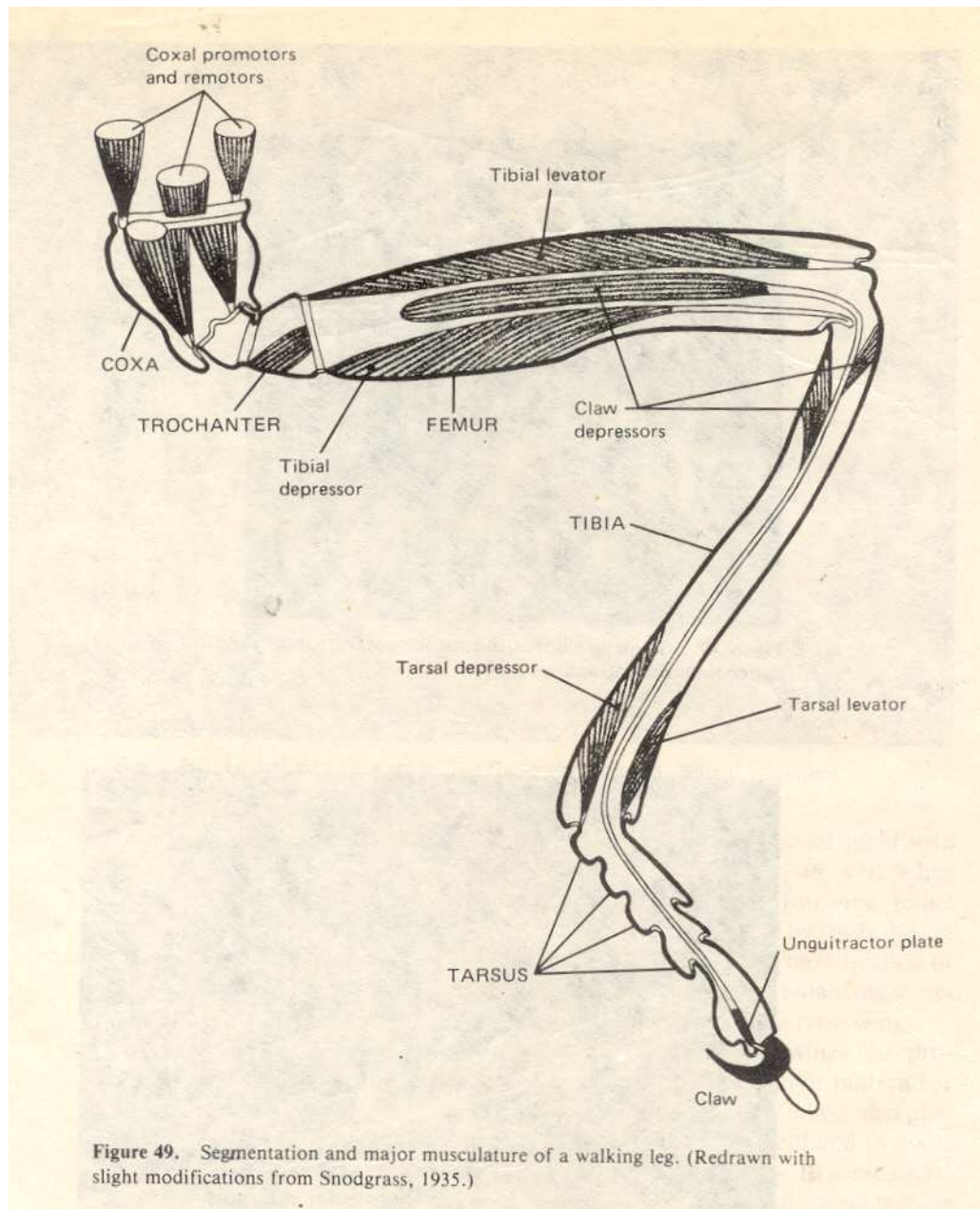


Figure 40. Diagrammatic representation of the insect thorax indicating the three segments involved as well as sclerites and position of legs and wings.

the wing-bearing segments to form a U-shaped brace beneath the wings. The dorsal extension of each pleural sulcus, the *pleural wing process*, functions as a fulcrum for wing movement. Often the sternum has been invaginated into the body to form a furca for more efficient bracing and muscle attachment as well as to enable the legs to be placed directly under the body for better movement.



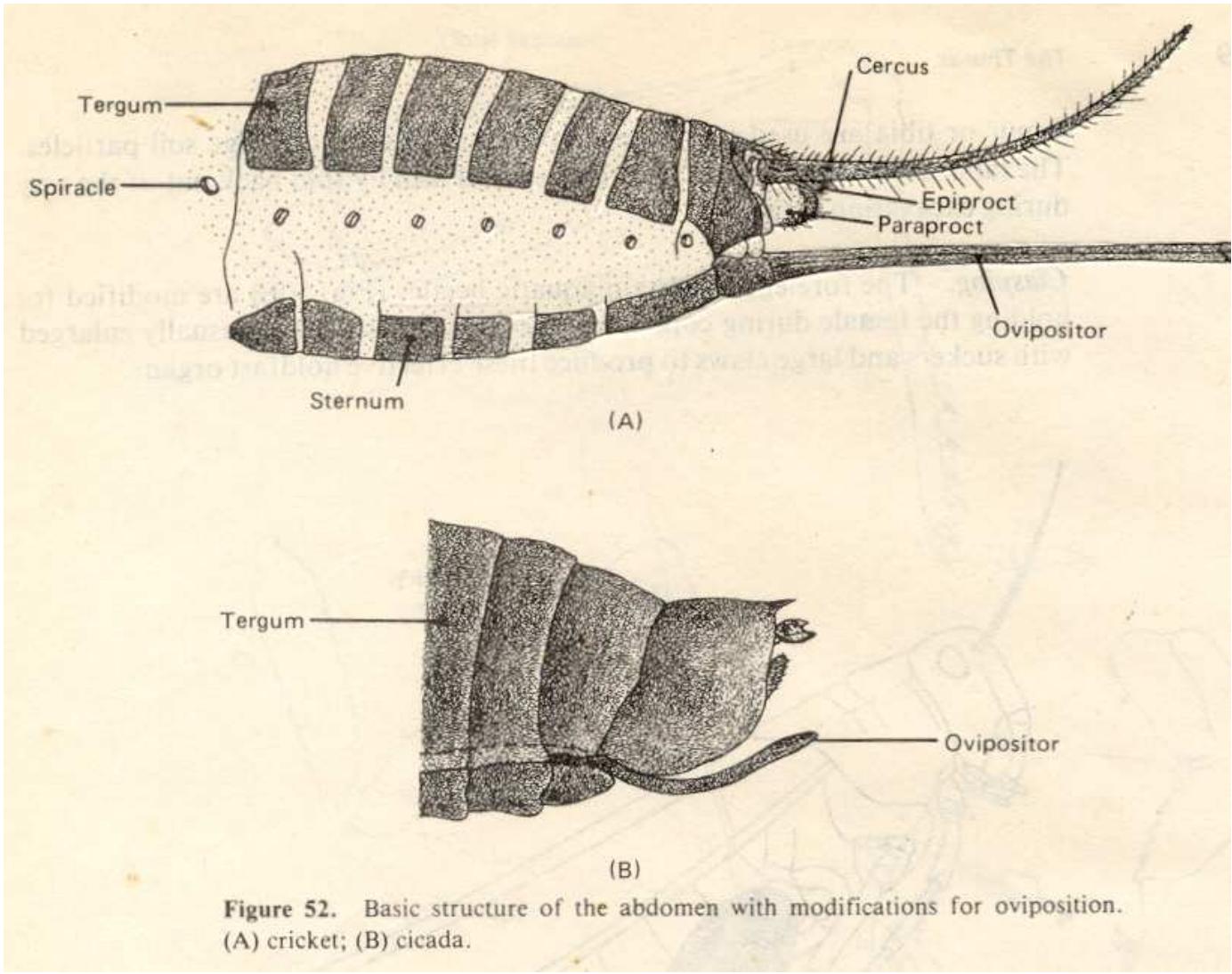


Figure 52. Basic structure of the abdomen with modifications for oviposition. (A) cricket; (B) cicada.









