

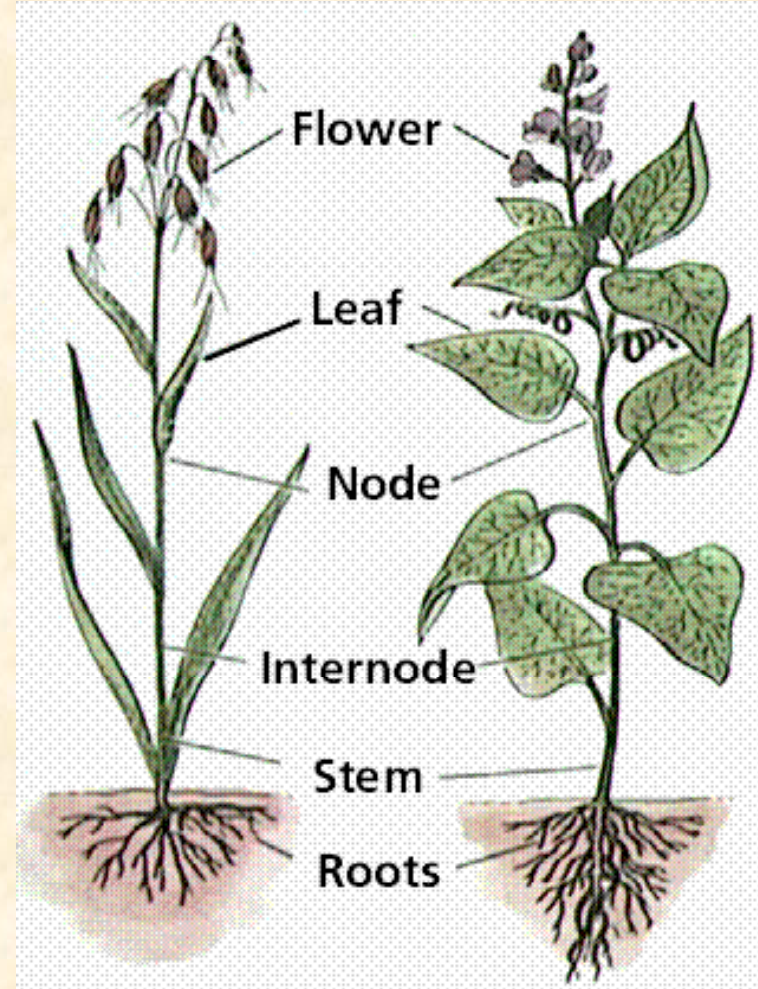
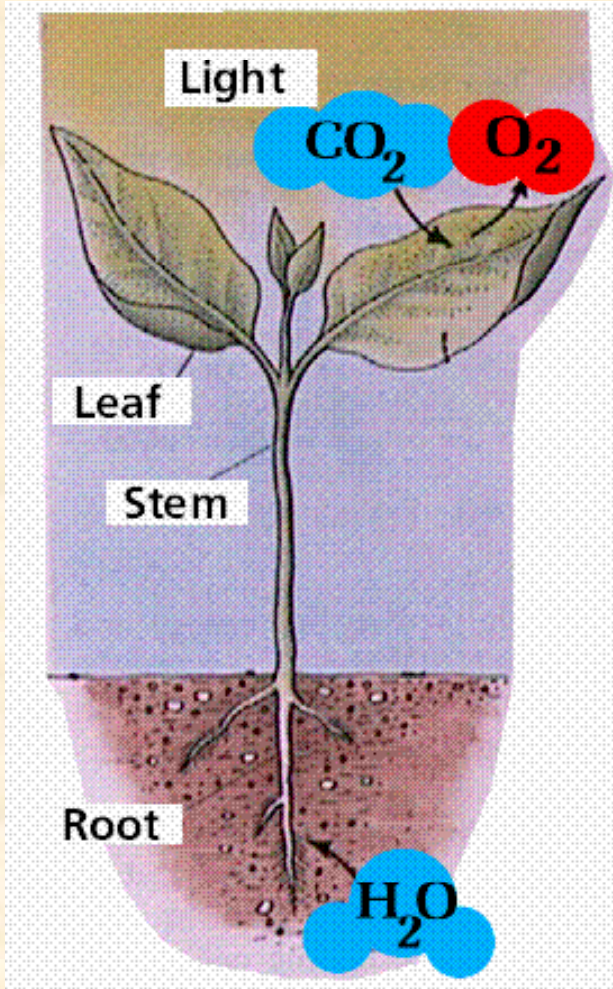
PLANTS AND THEIR ANATOMICAL STRUCTURE

Part 2: Plant Organs

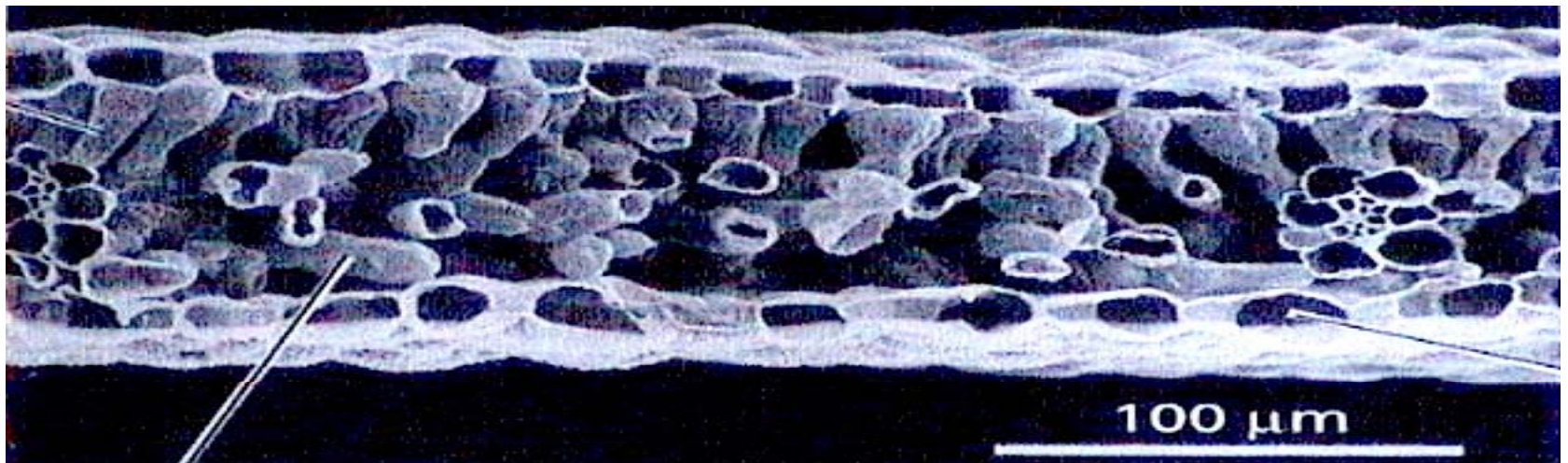
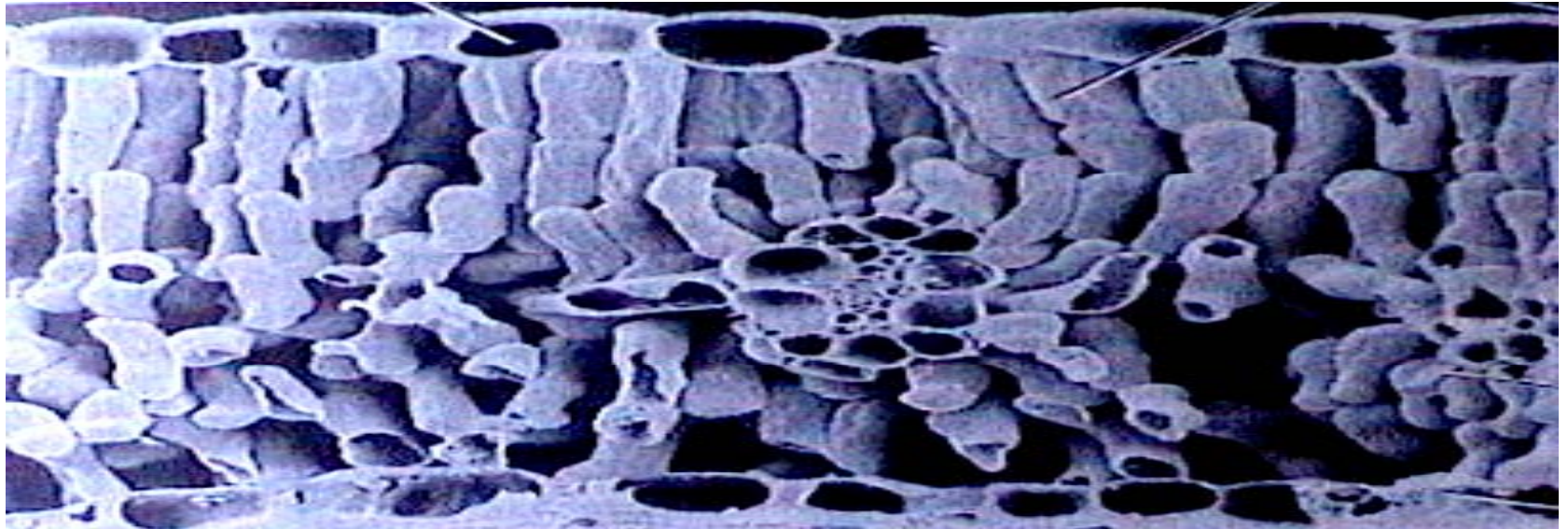
Adi Rahmat

**Jurusan Pendidikan Biologi, FPMIPA
Universitas Pendidikan Indonesia**

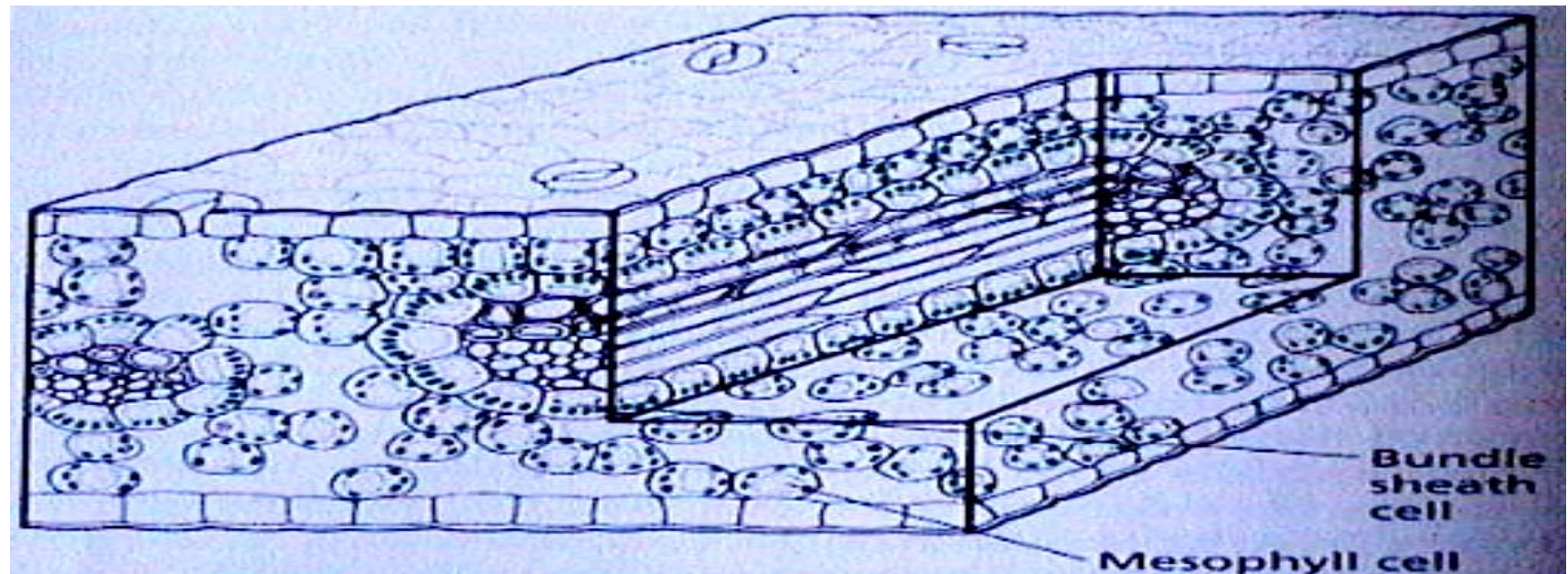
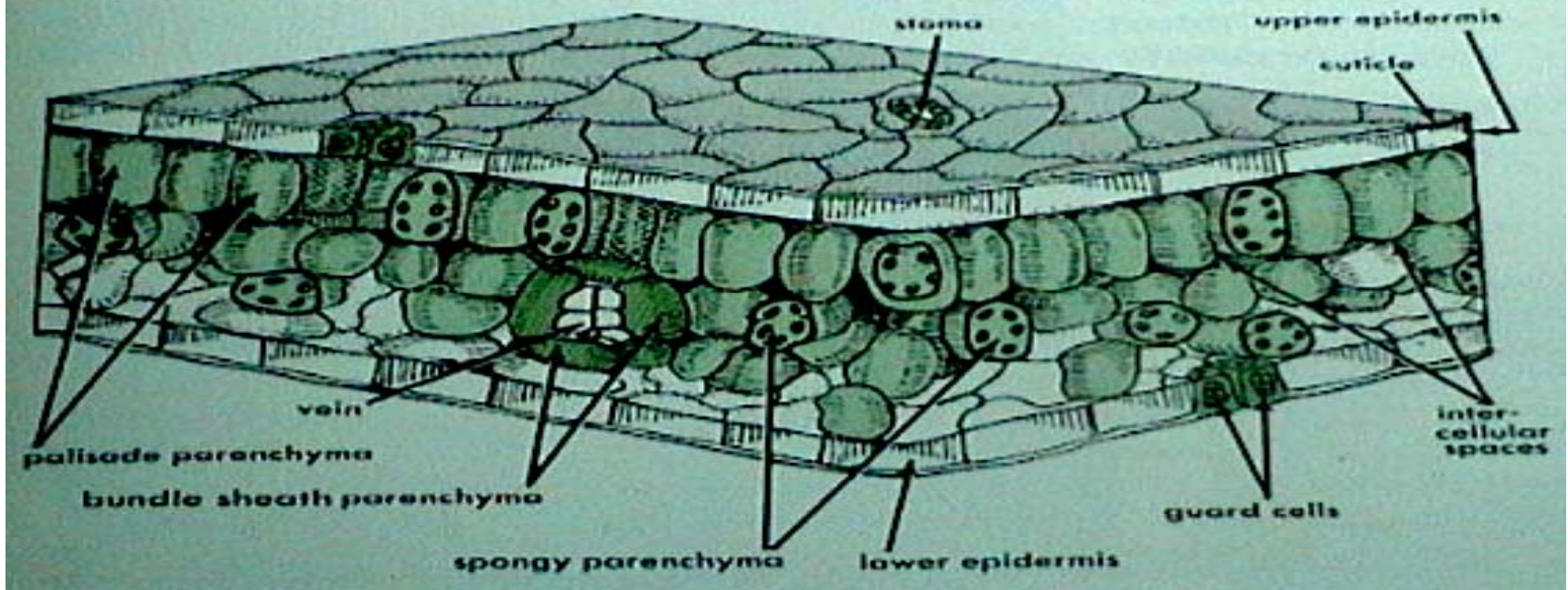
General Plant Organization

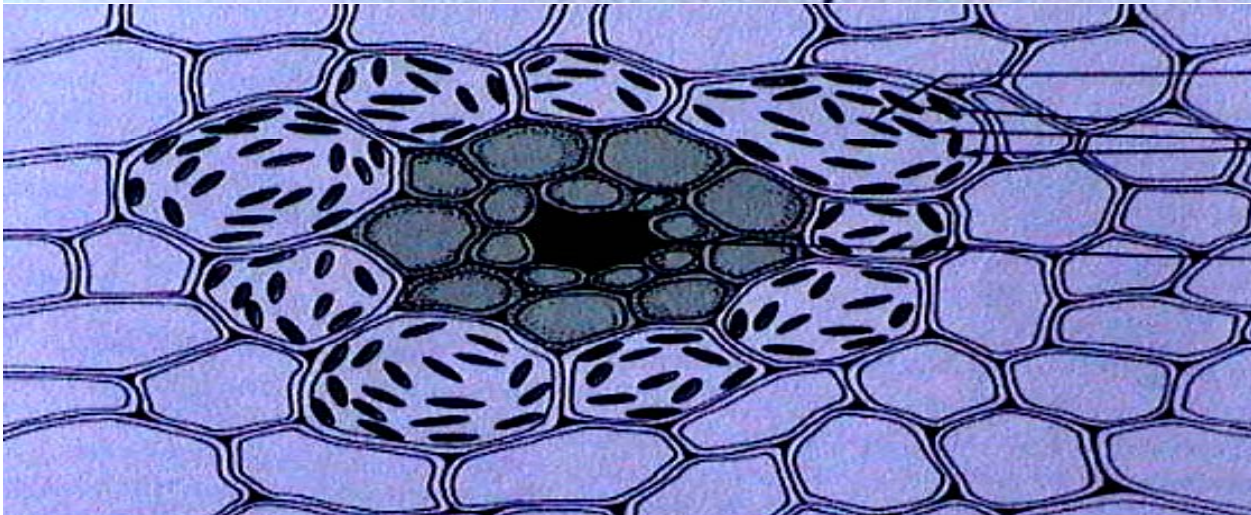
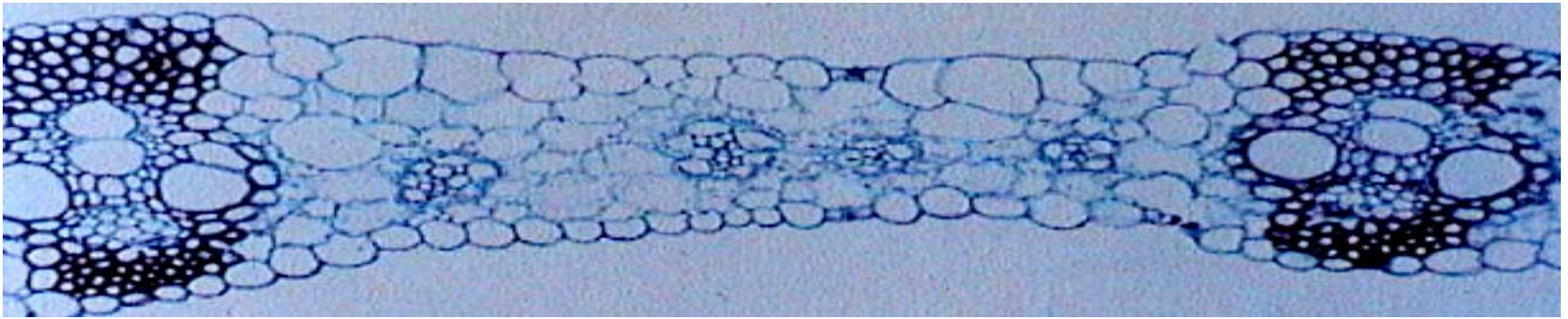


Struktur Anatomi Daun



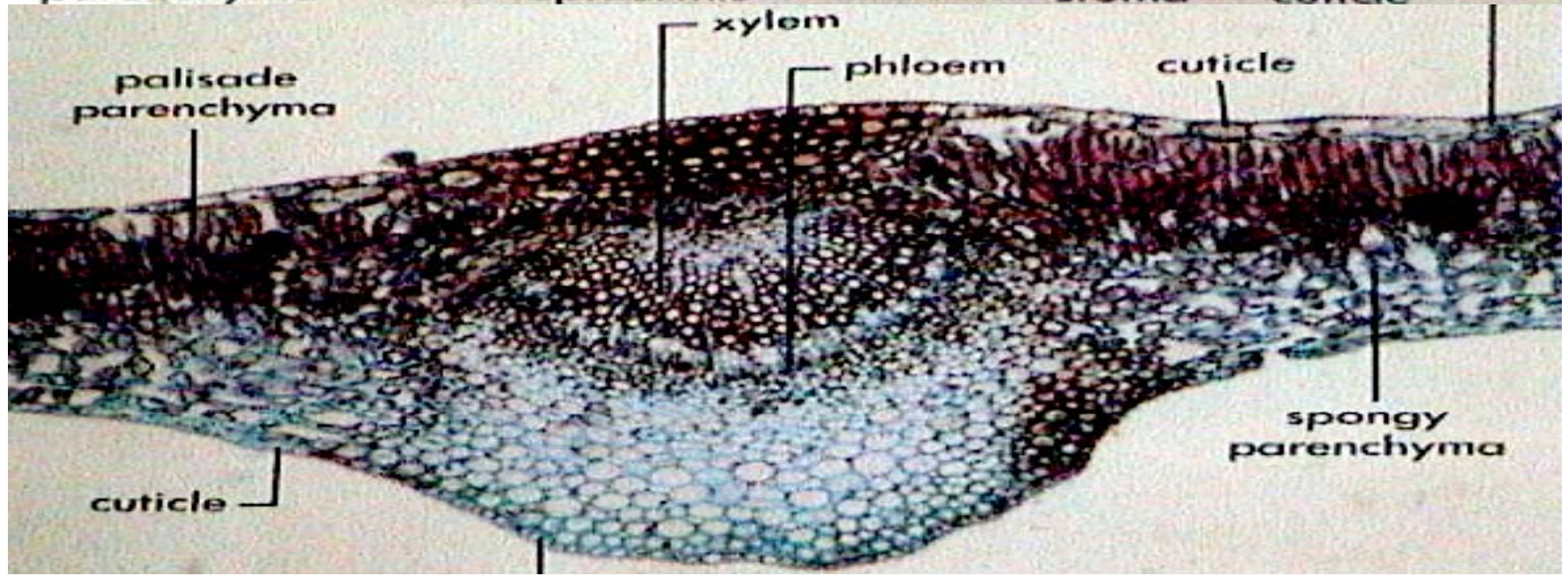
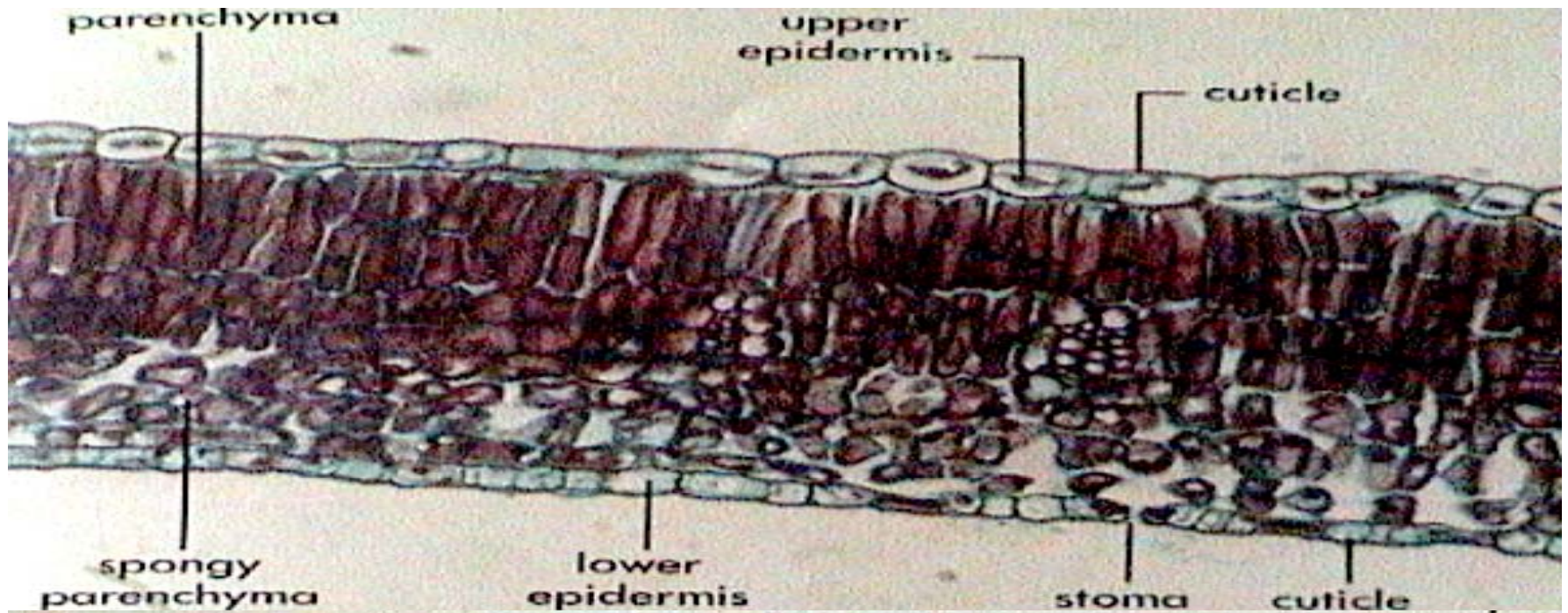
Three-dimensional diagram of a section of a foliage leaf, $\times 20$.



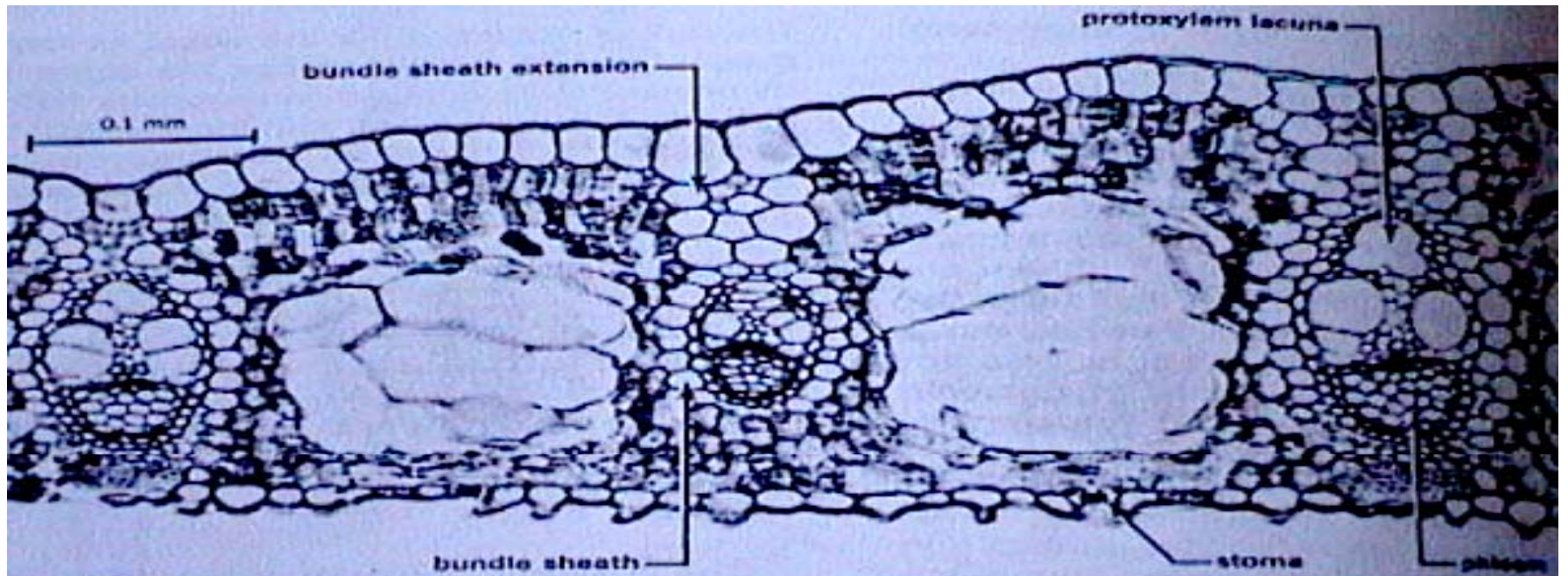
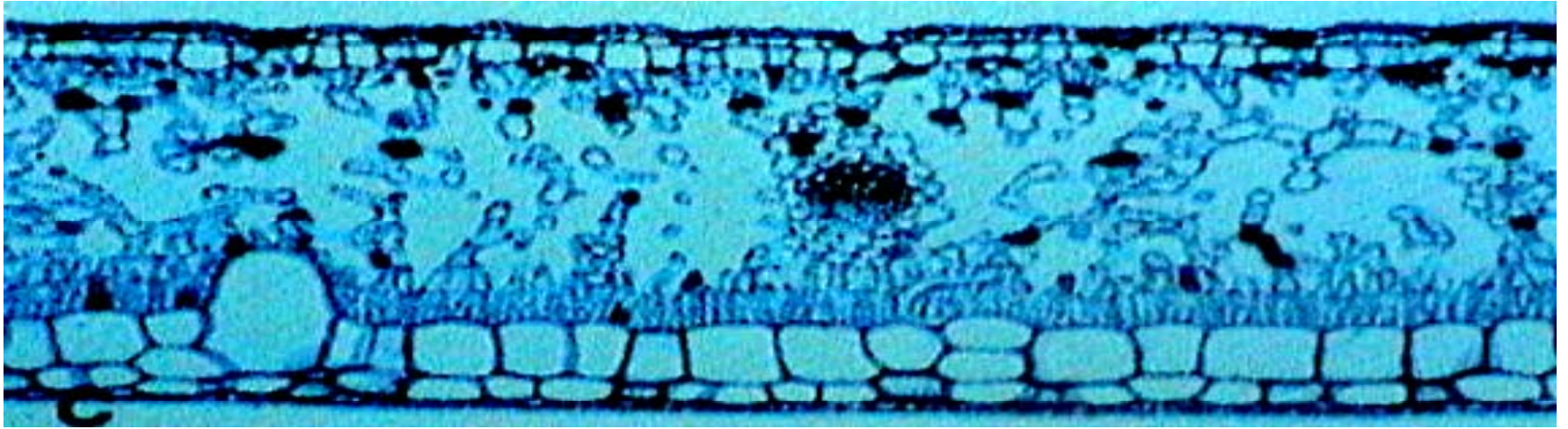


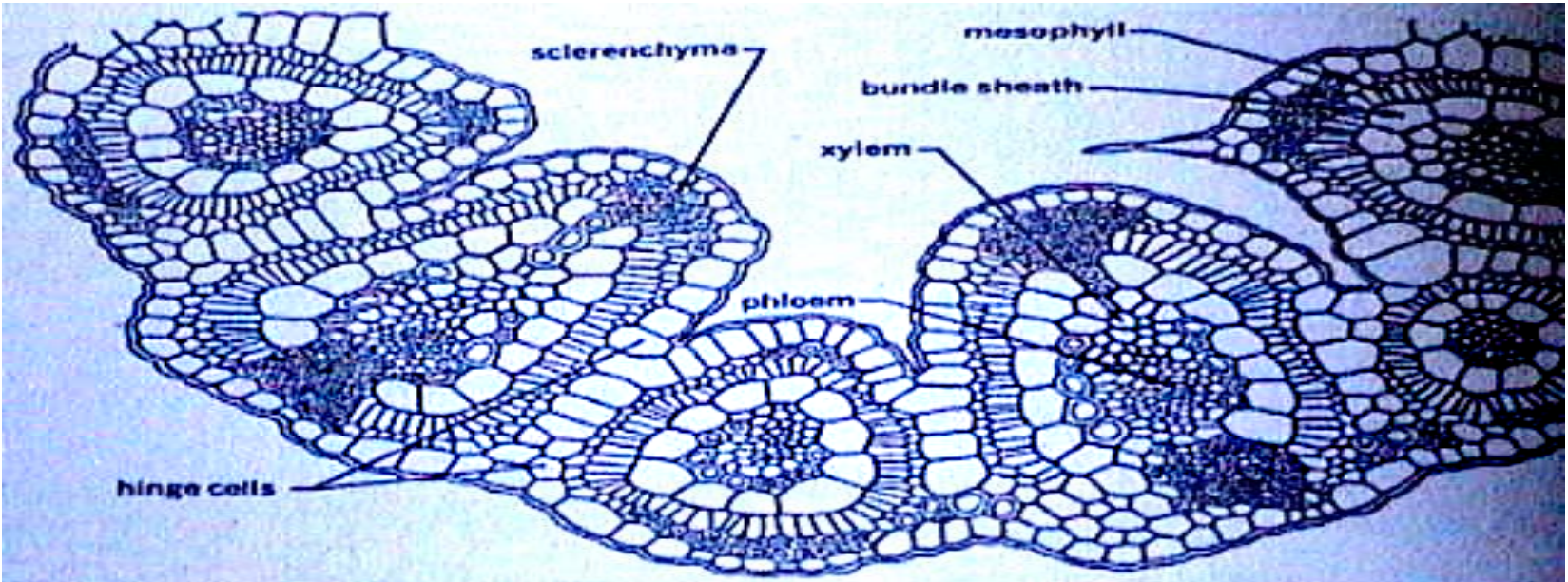
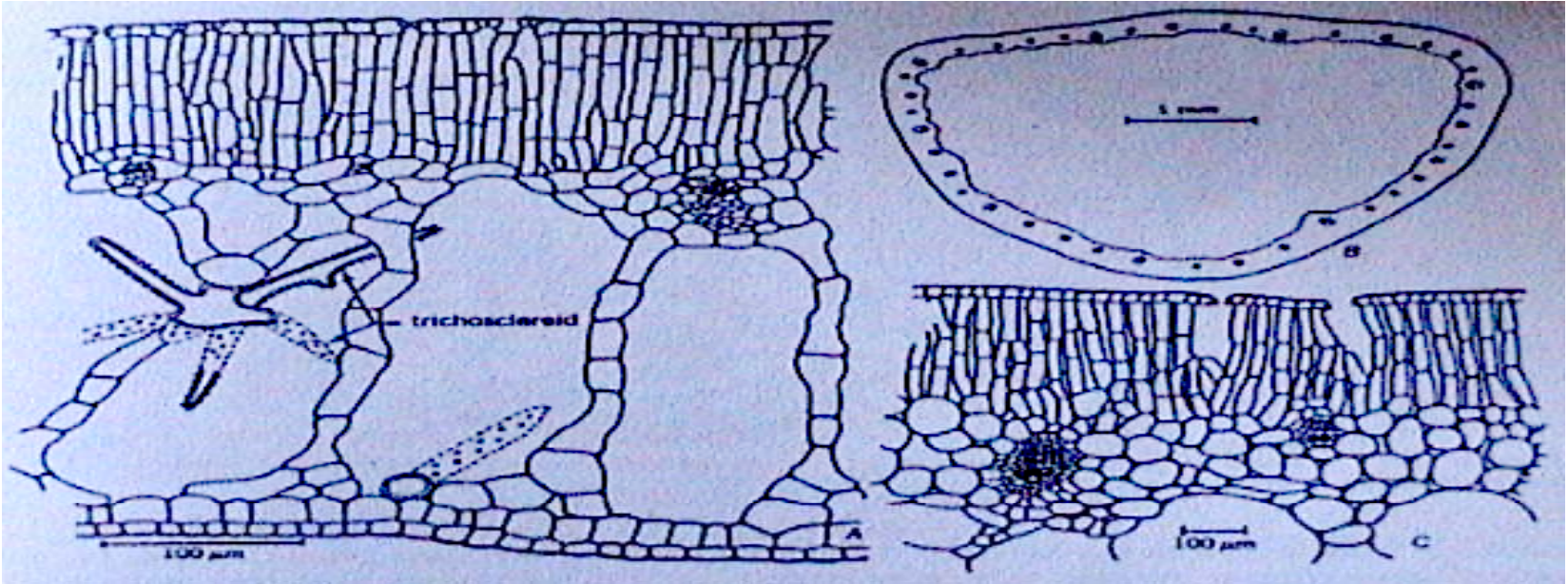
**Struktur
Anatomi
Daun
Monokotil
(Grass)**

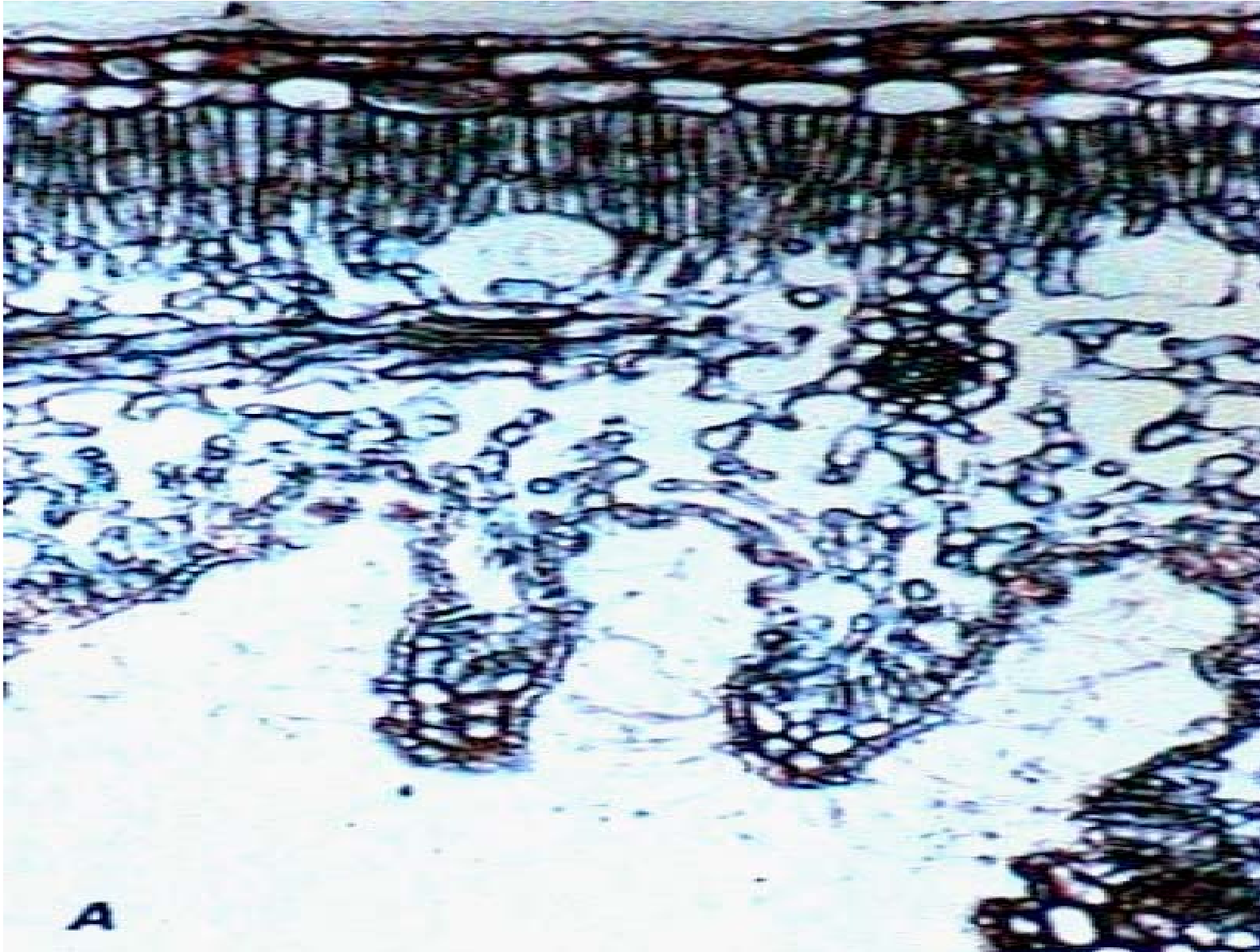
Struktur Anatomi Daun Diko



Variasi Struktur Anatomi Daun







the structure of the root

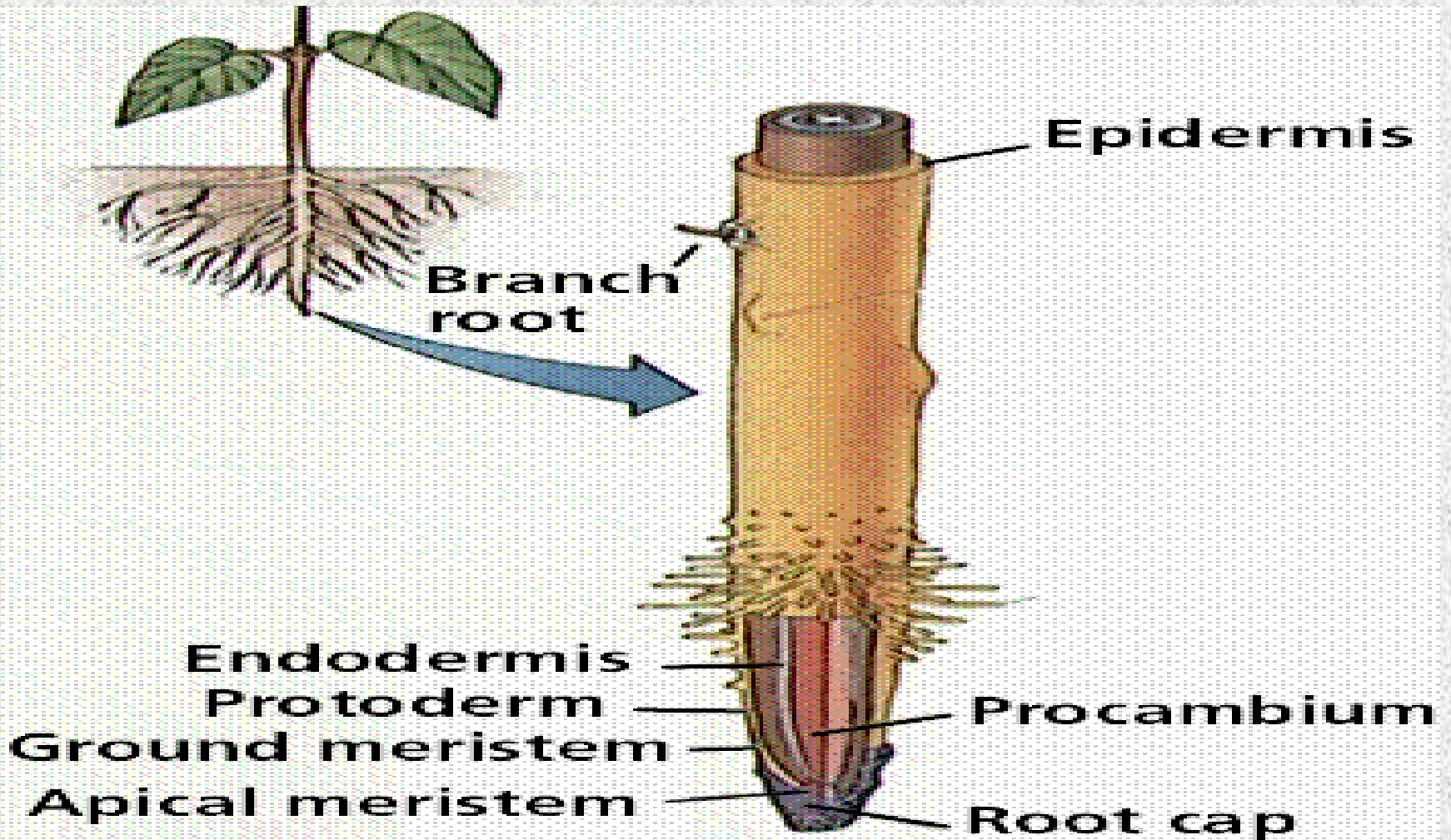
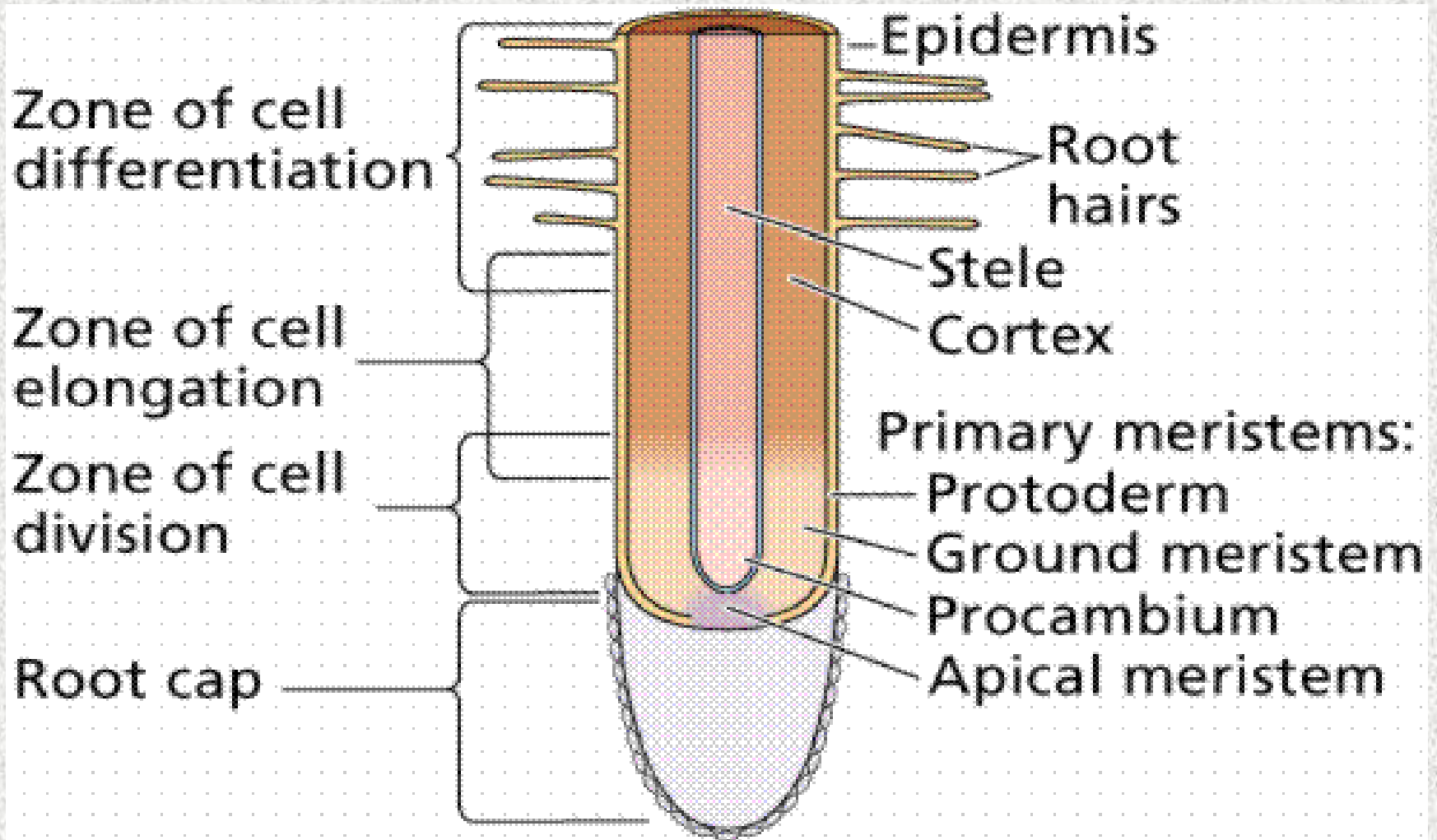


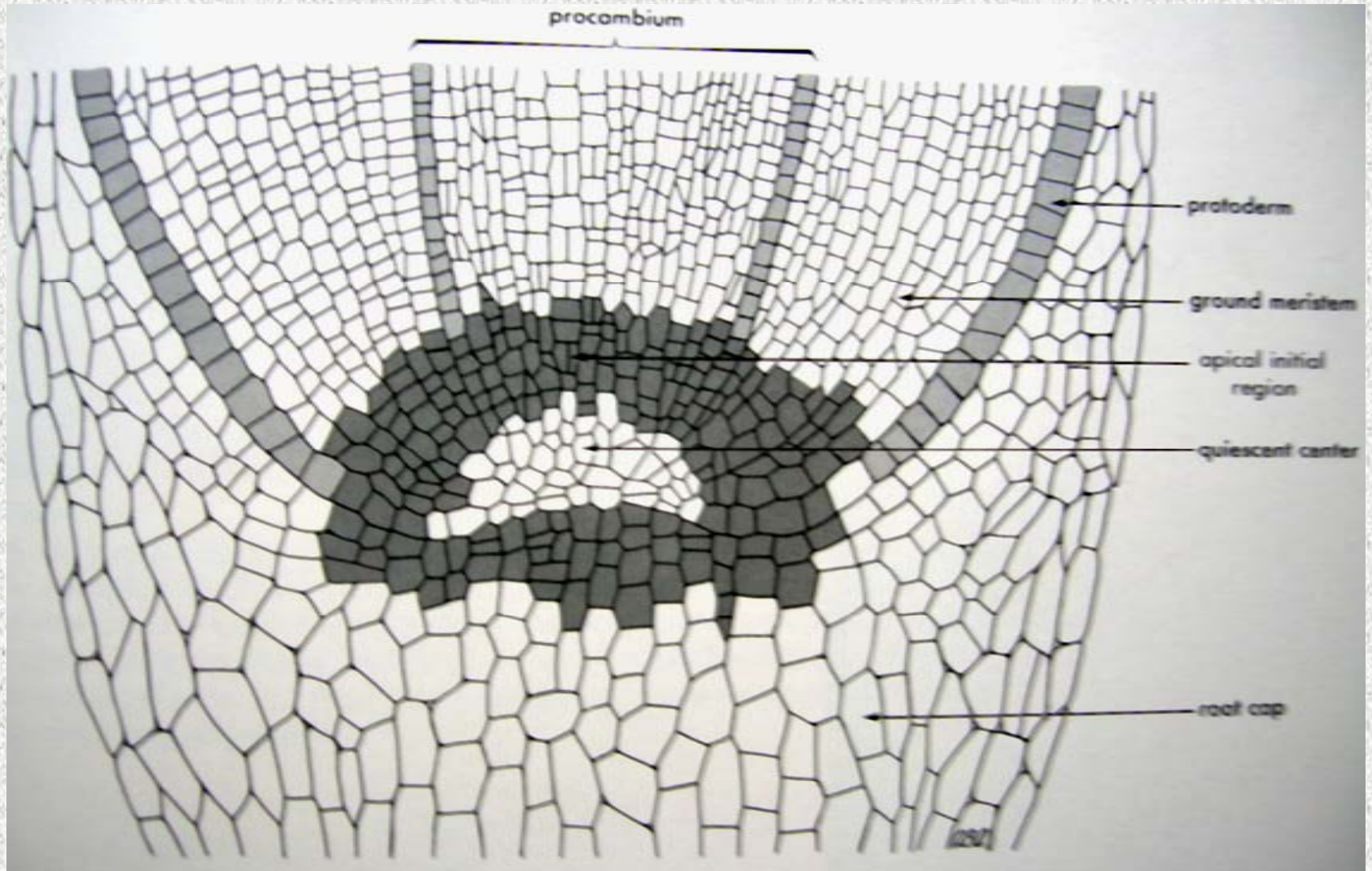
diagram of the root tip



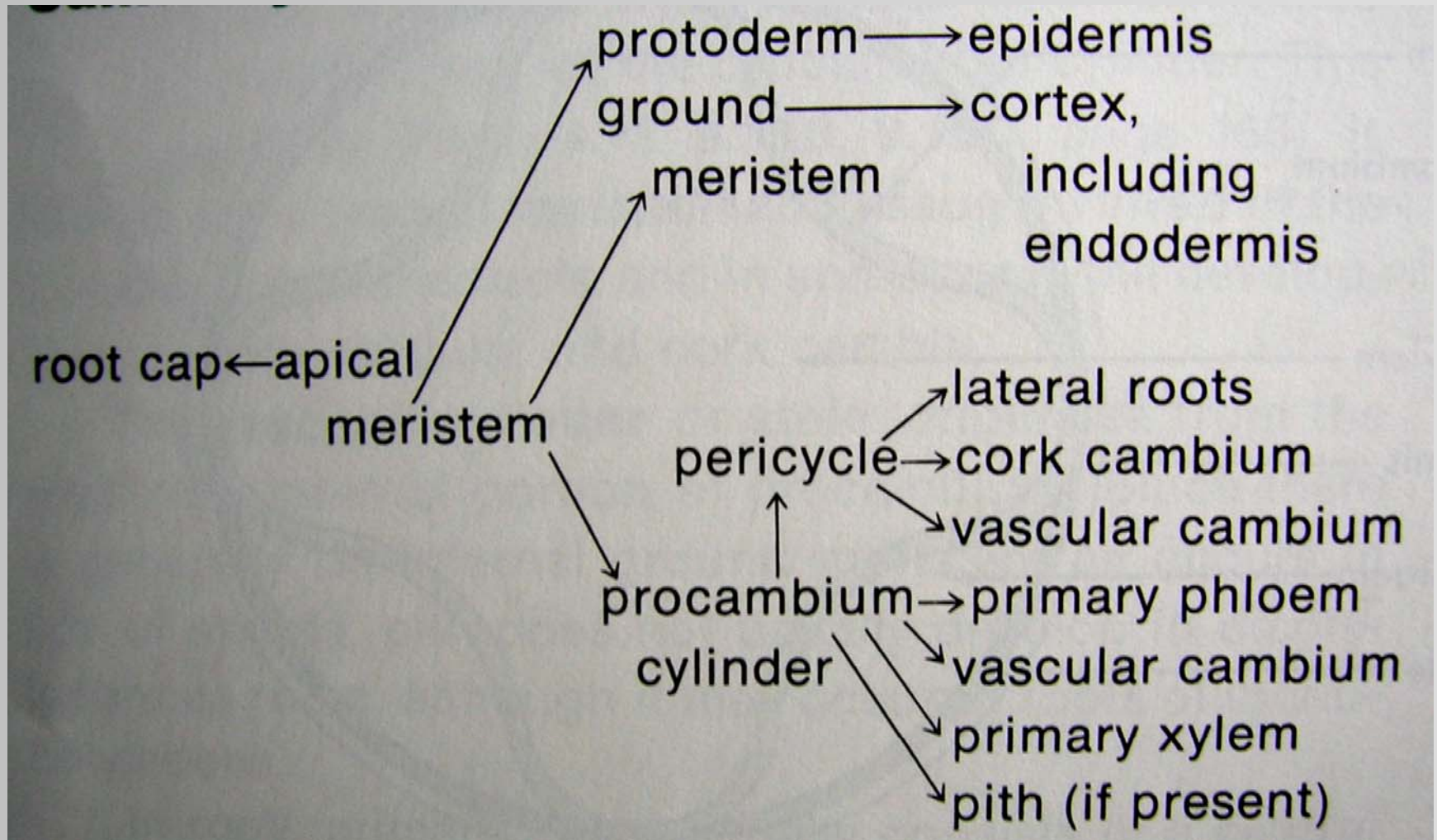
root tip



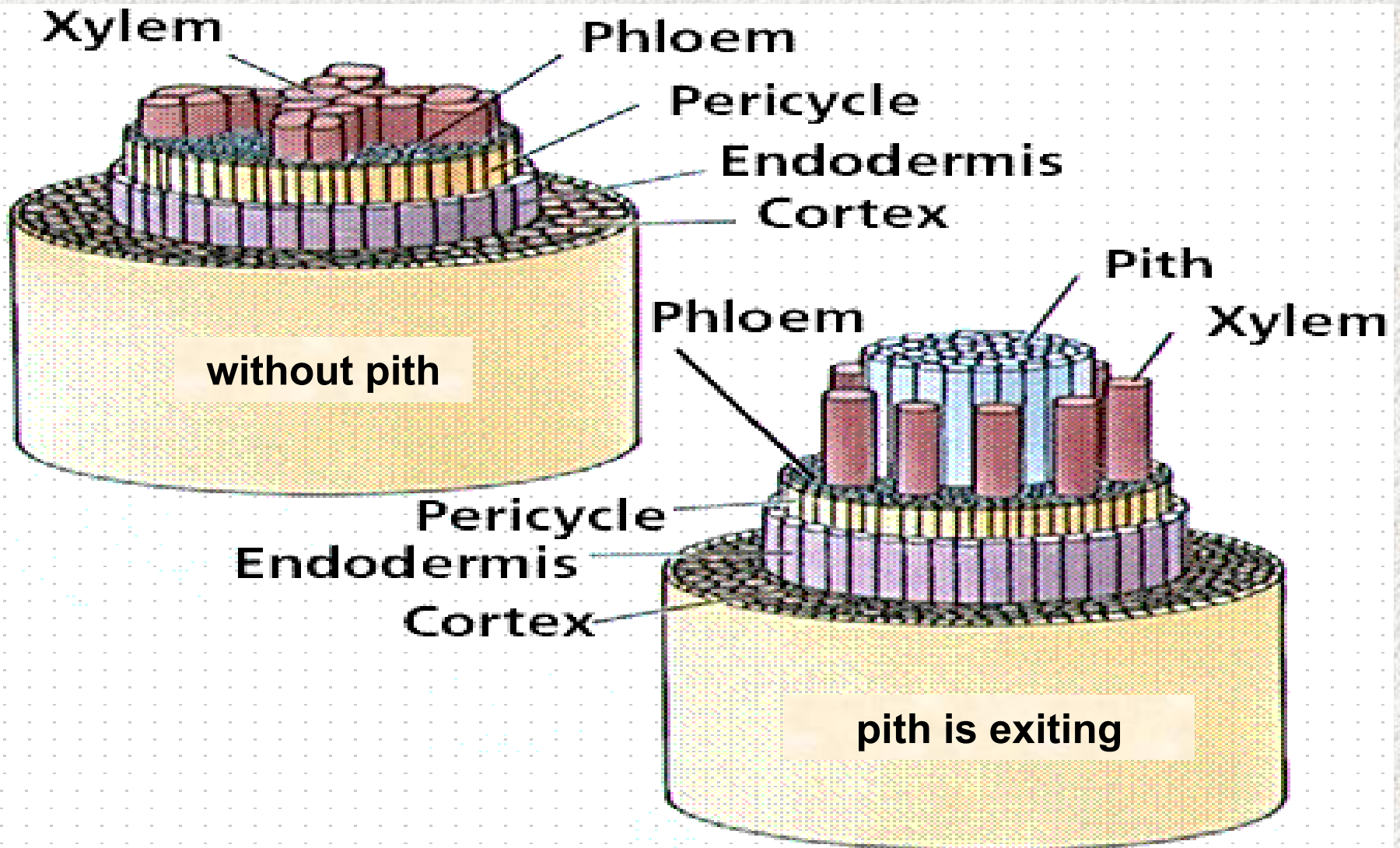
root tip diagram



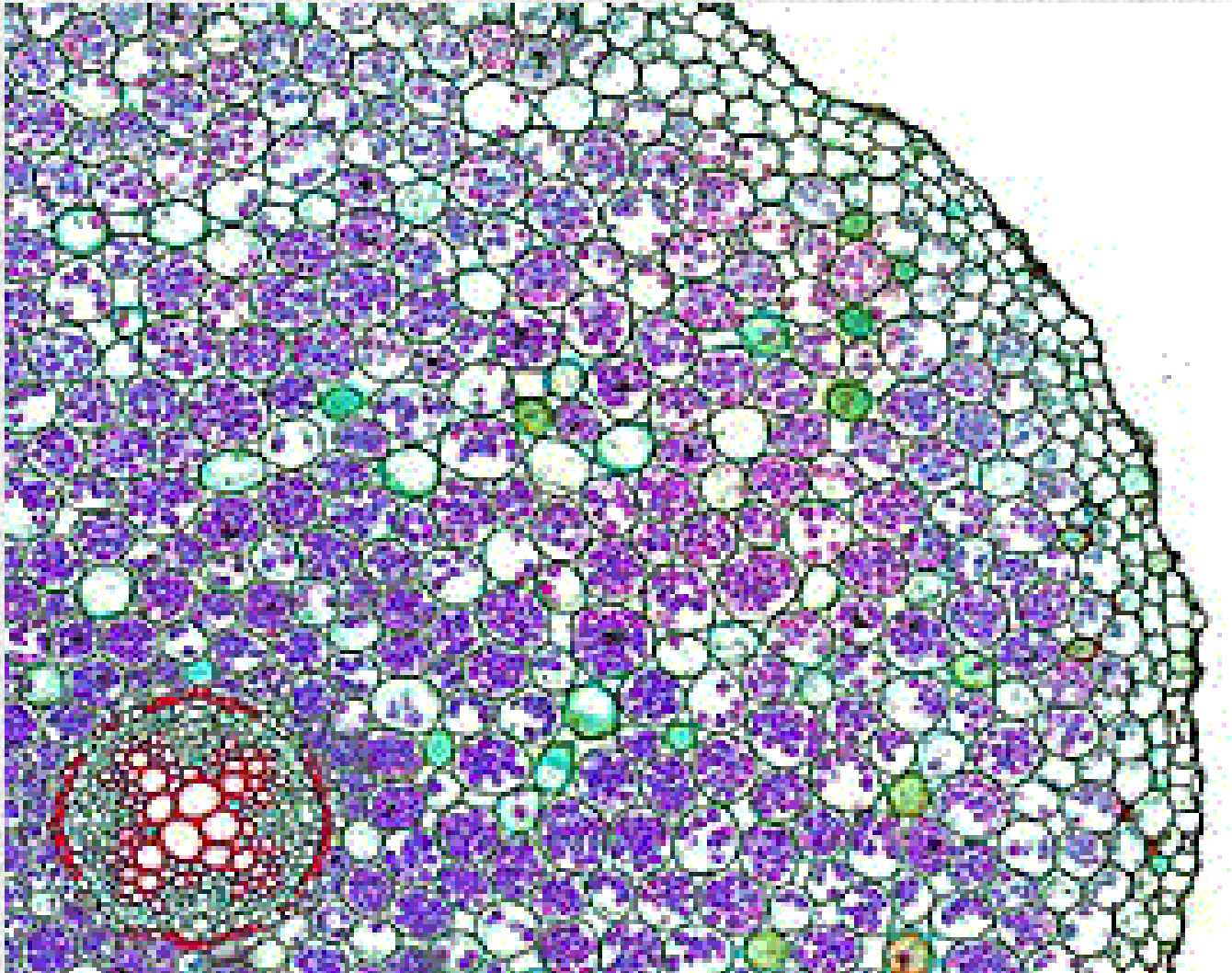
summary of the tissues origin in the root



two types of the root structure

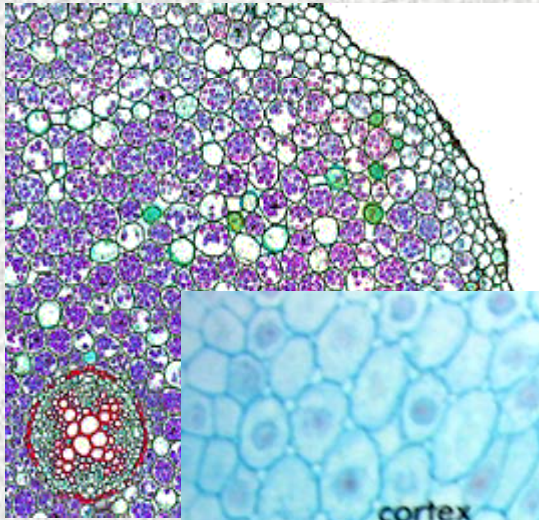


root without pith

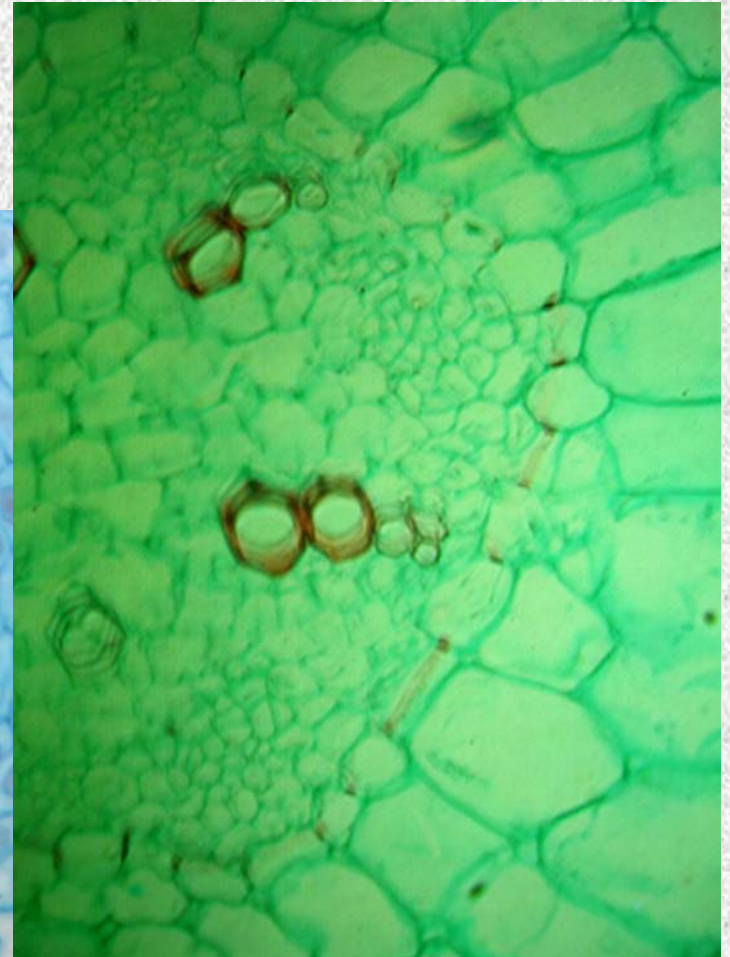
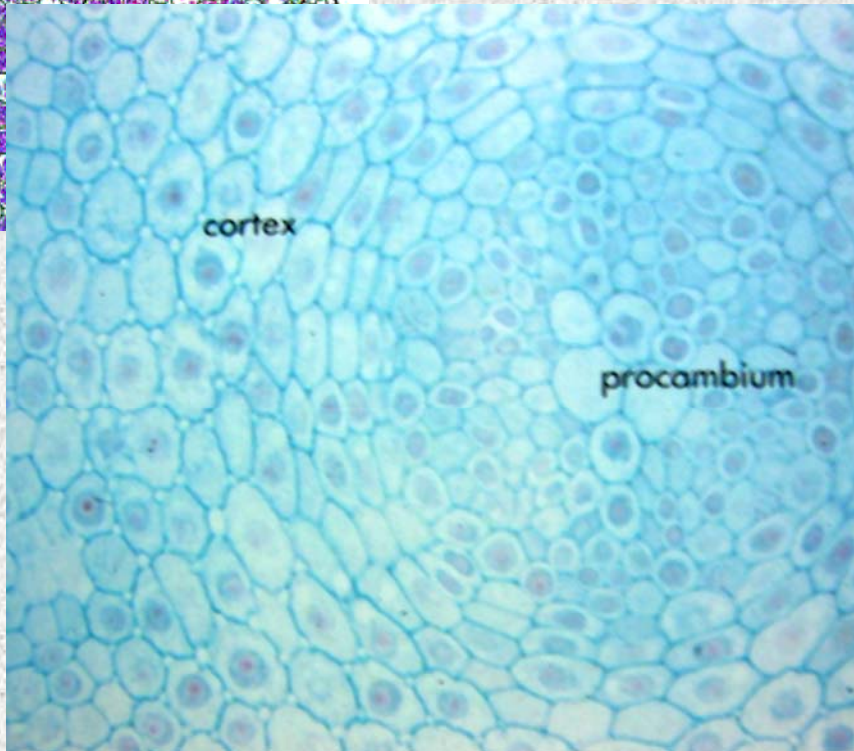


root without pith

(young root)

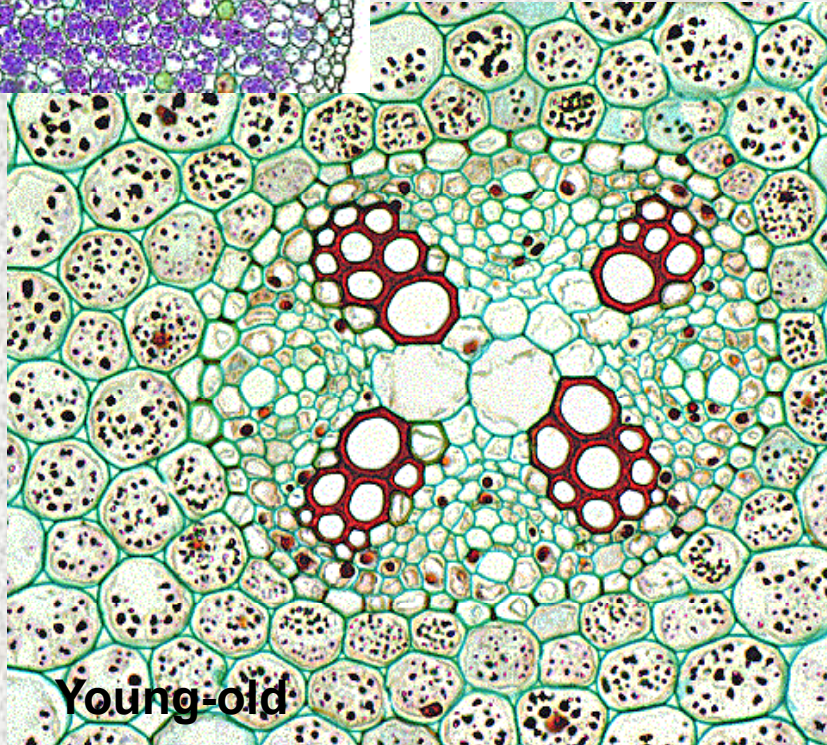
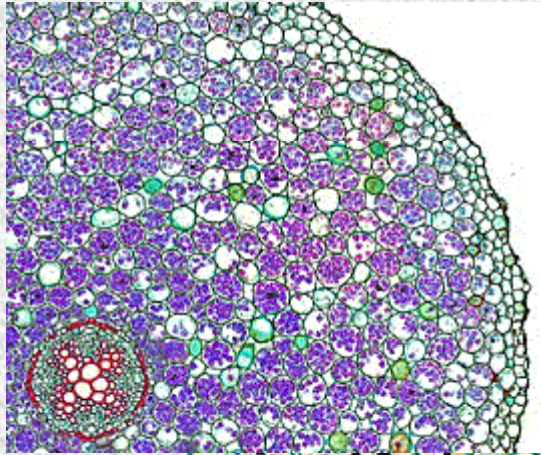


(Ranunculus)

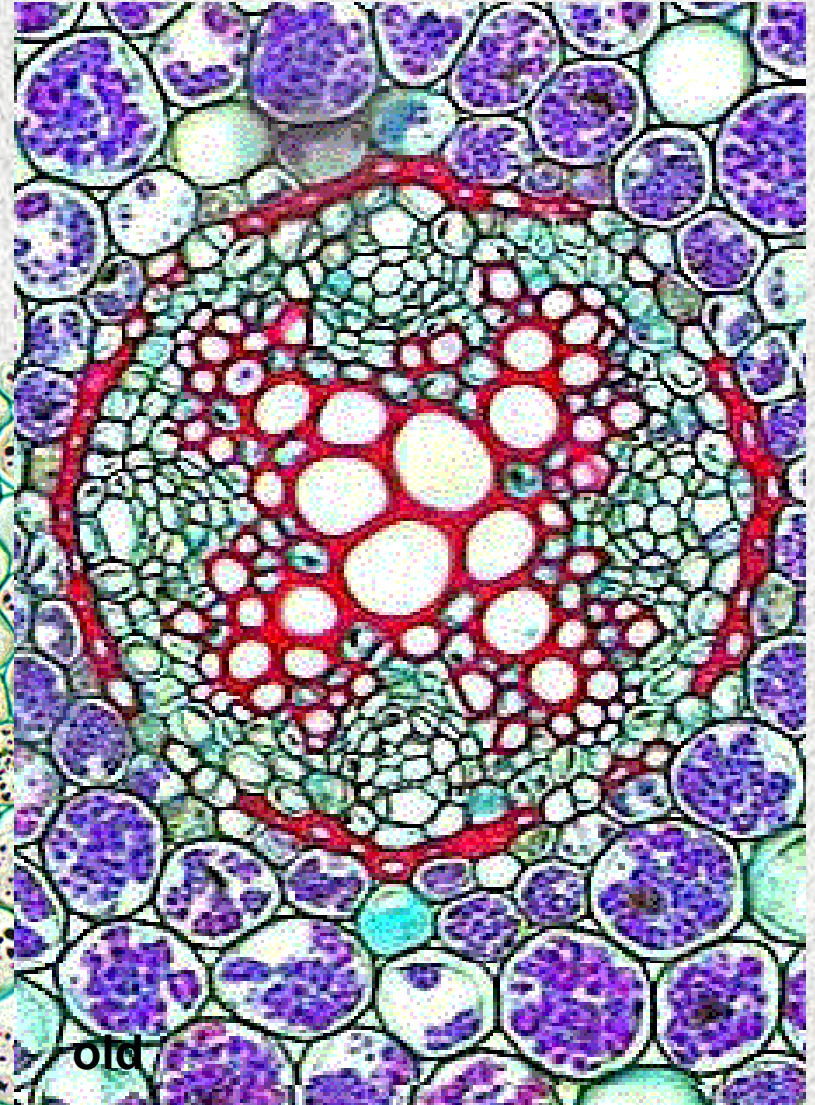


root without pith (old root)

(Ranunculus)

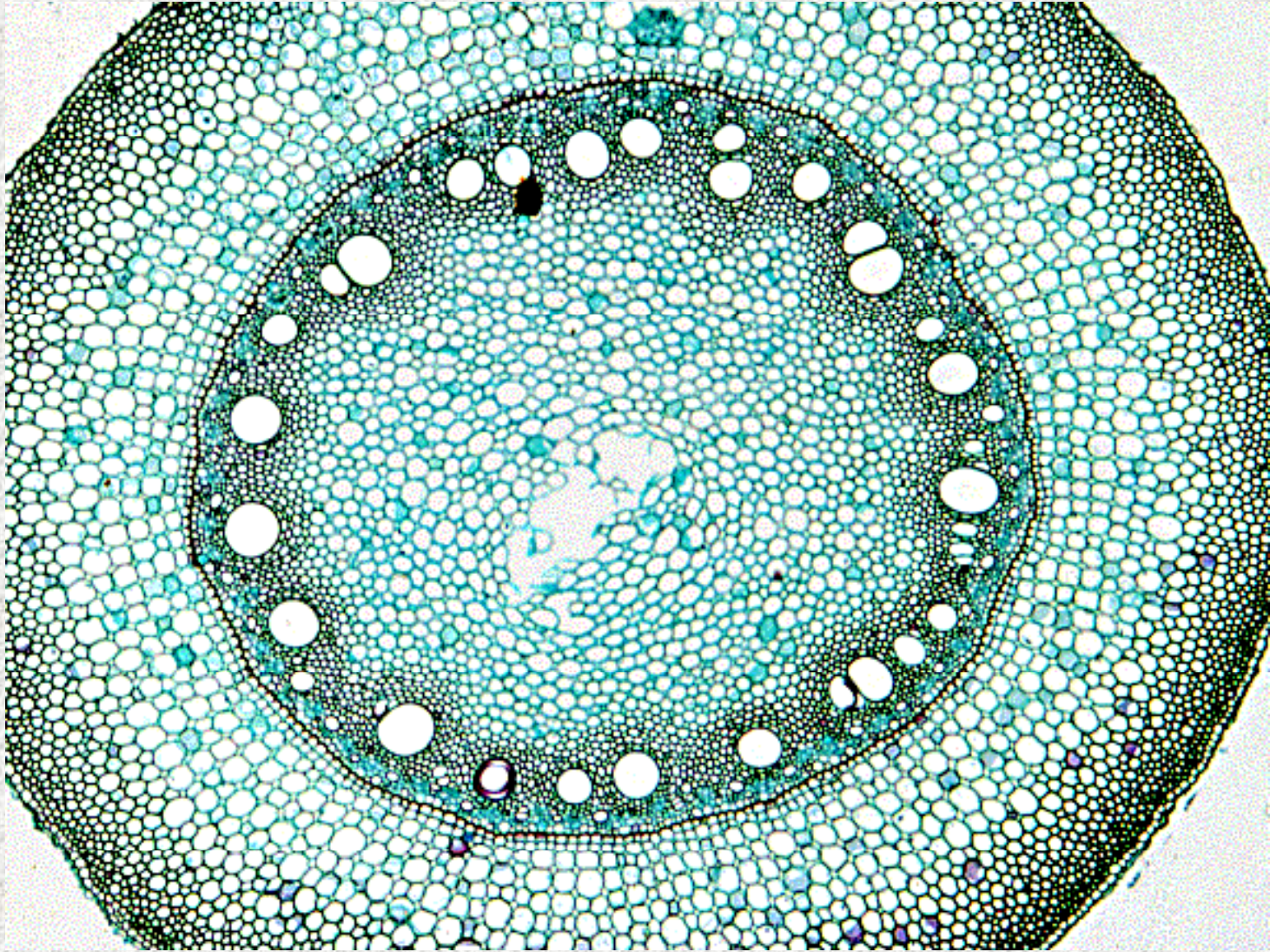


Young-old

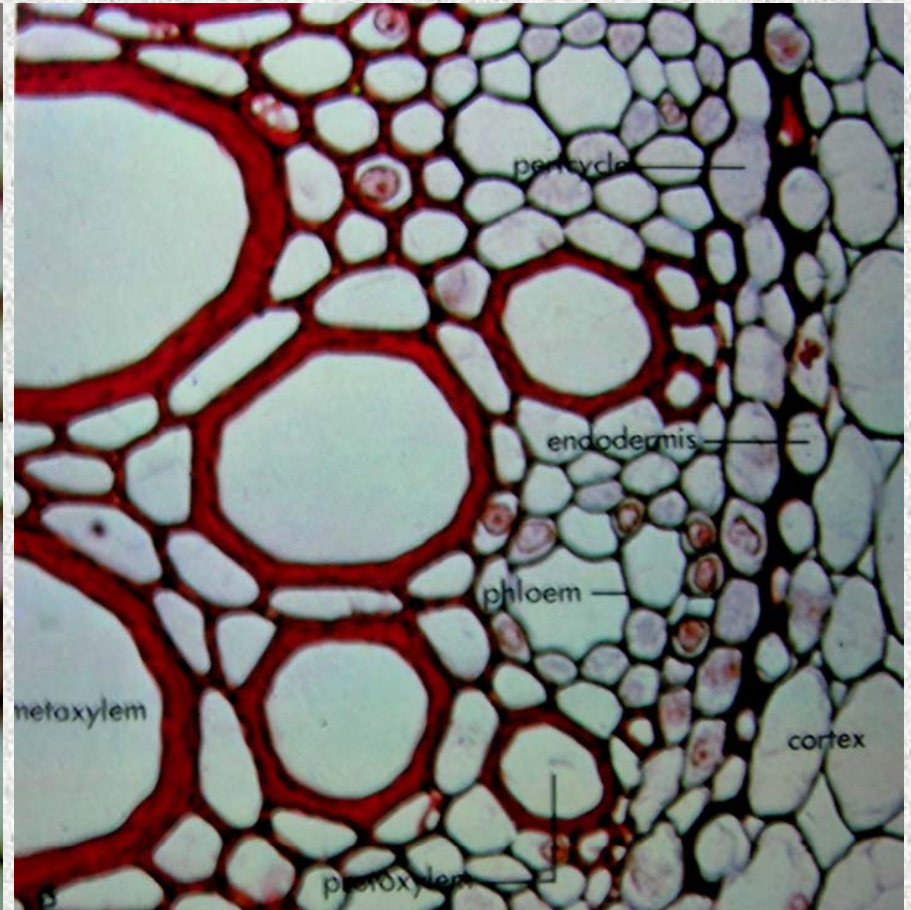
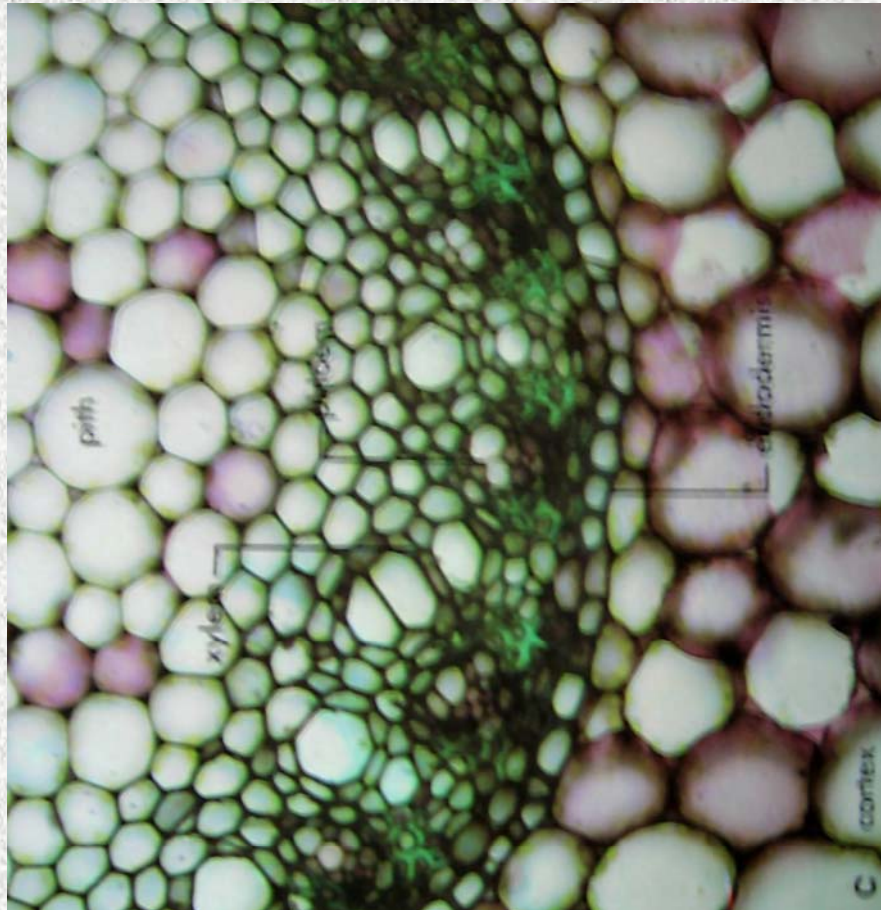


old

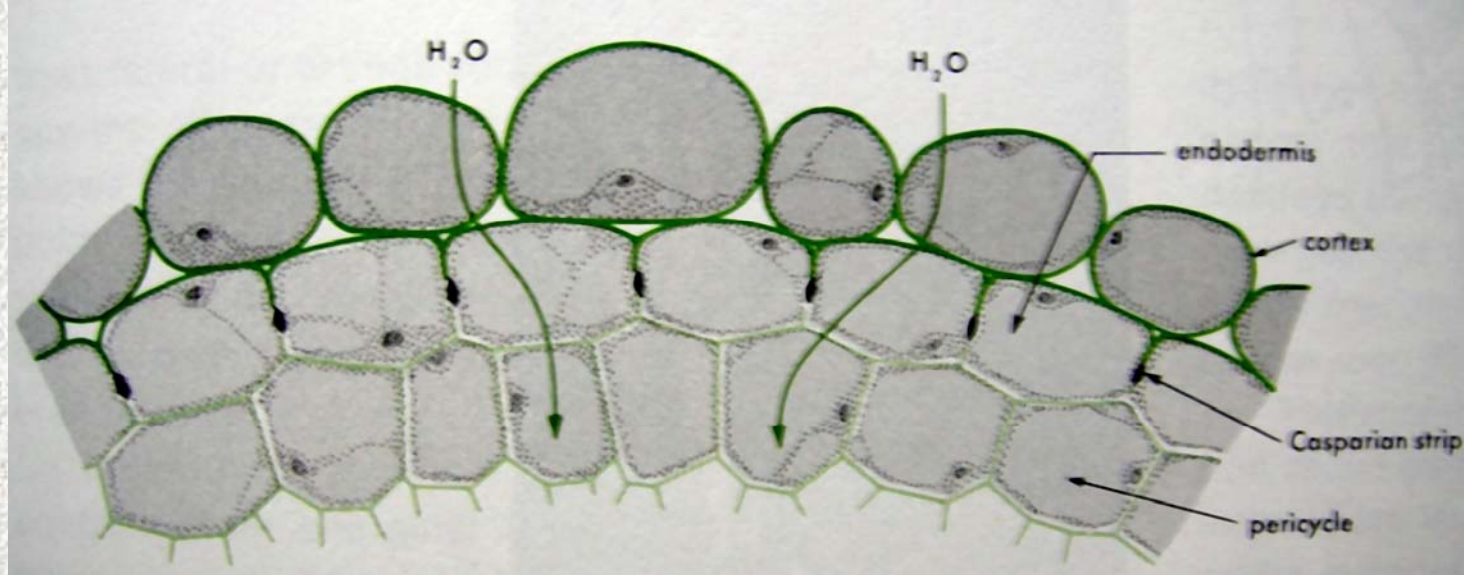
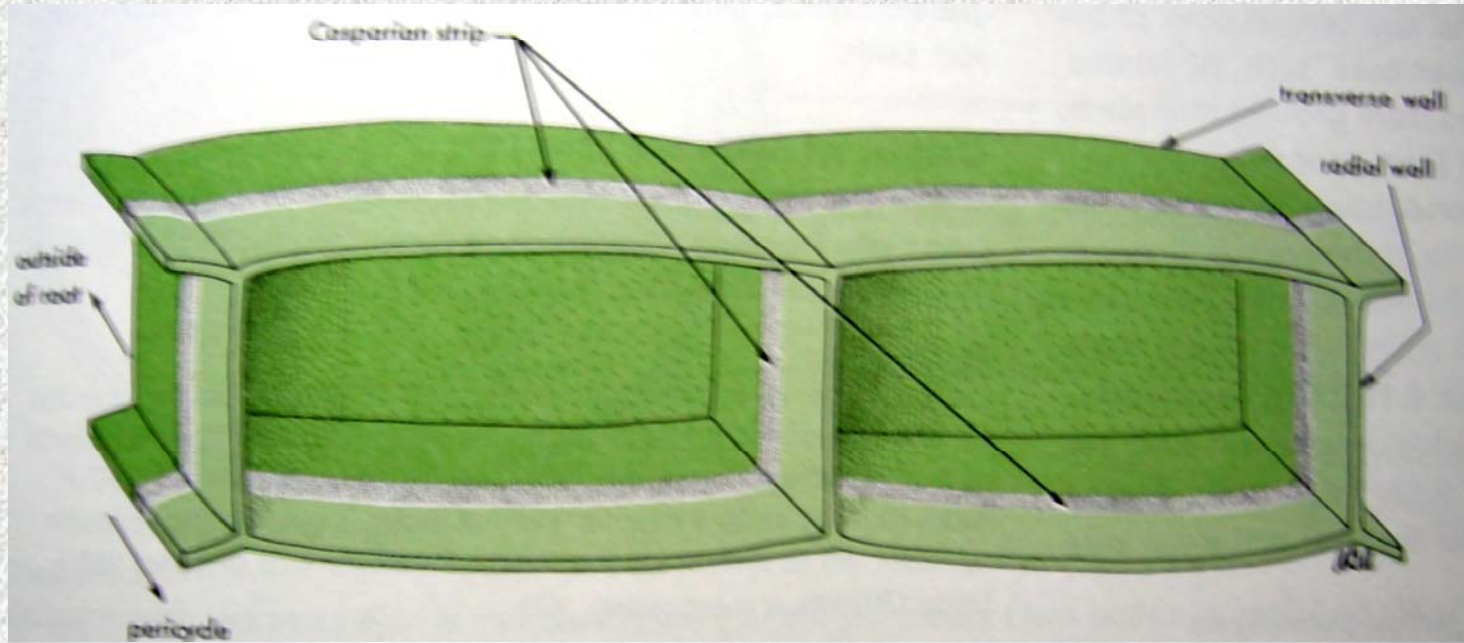
the exiting of pith



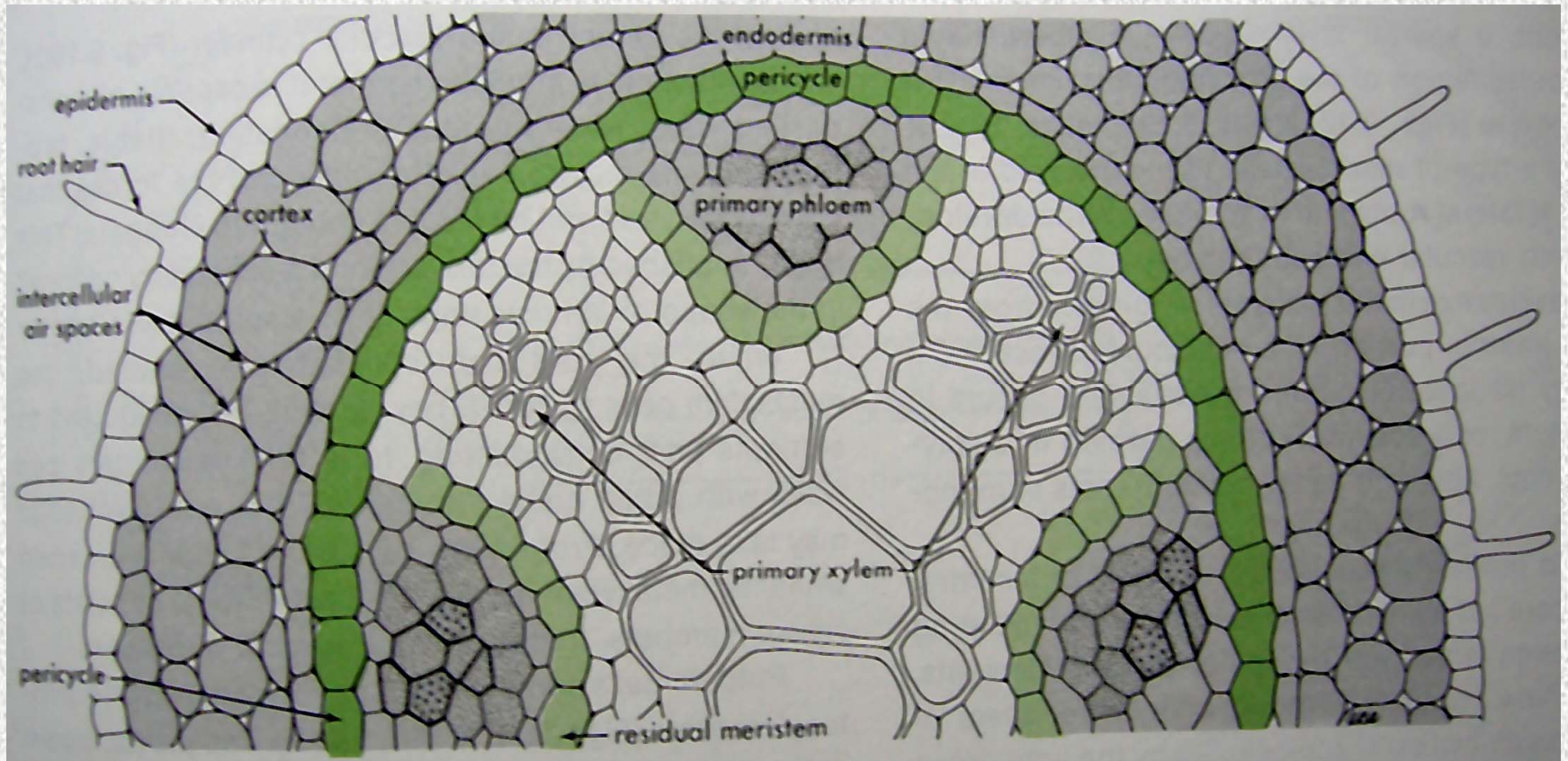
the exiting of pith



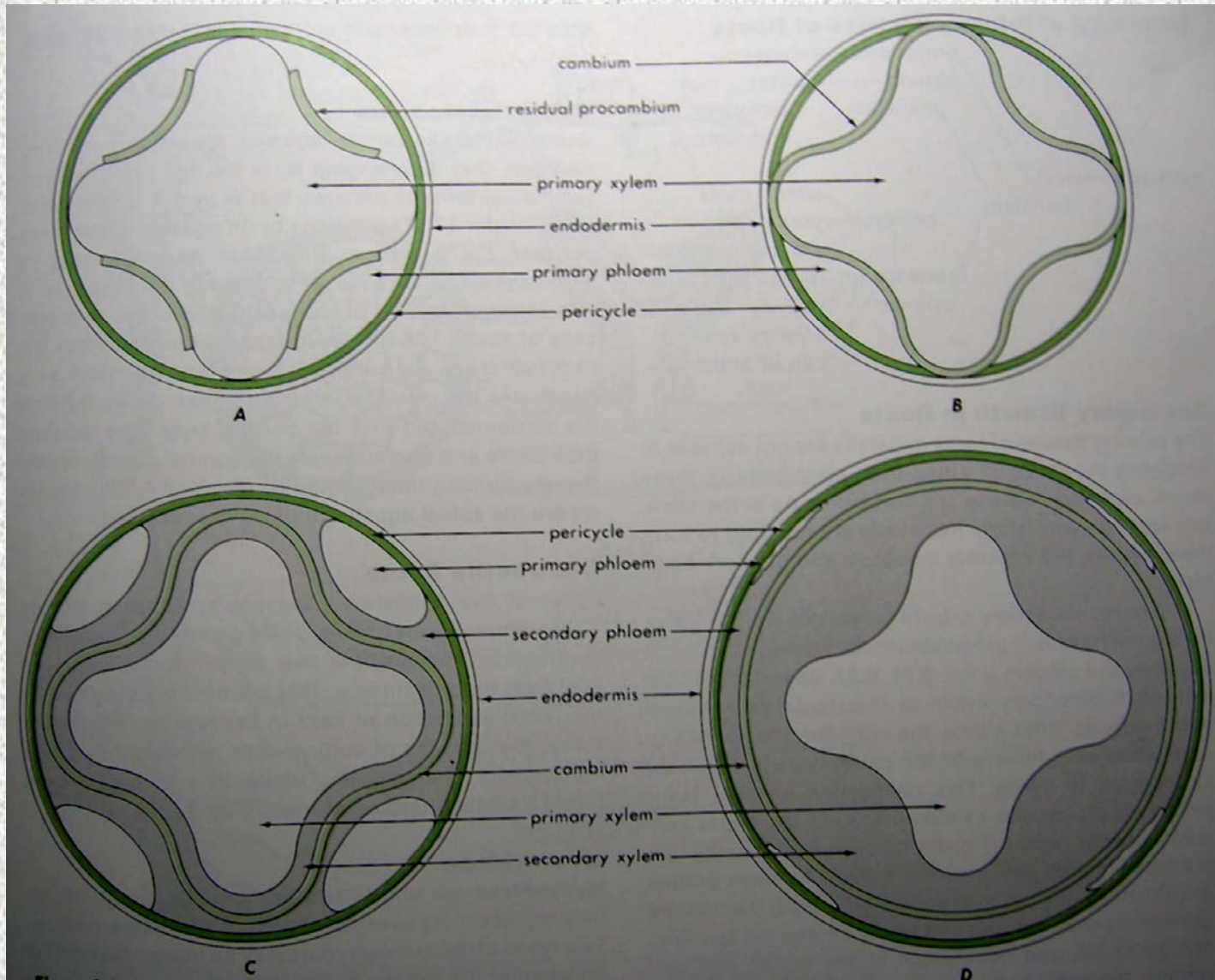
endodermis



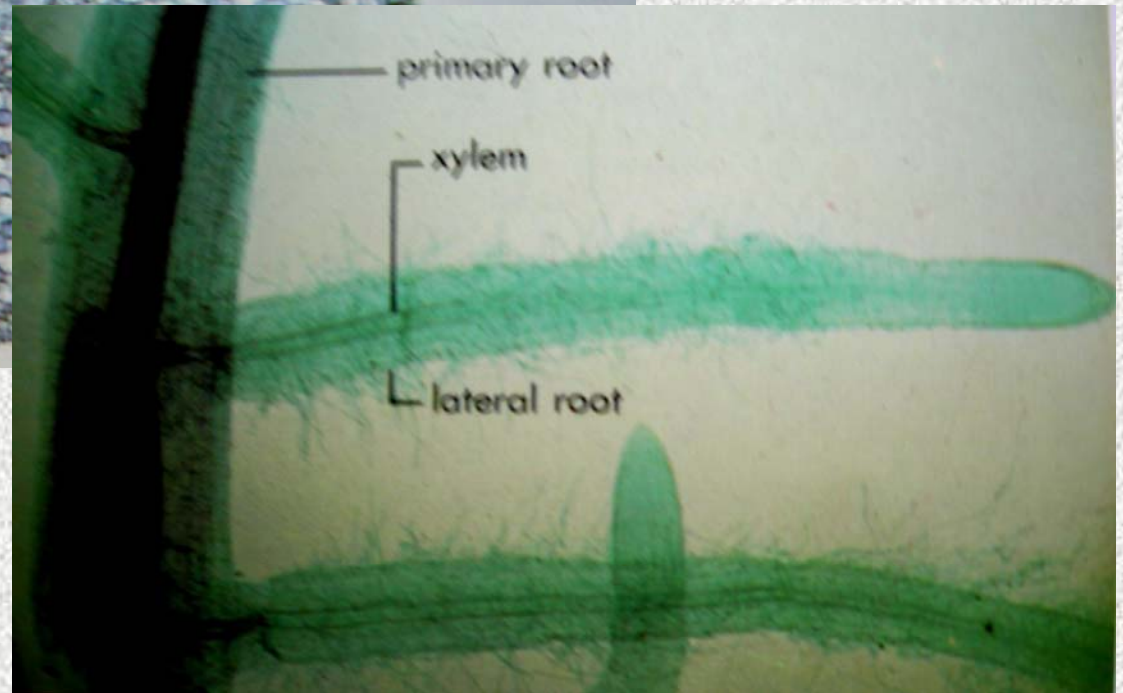
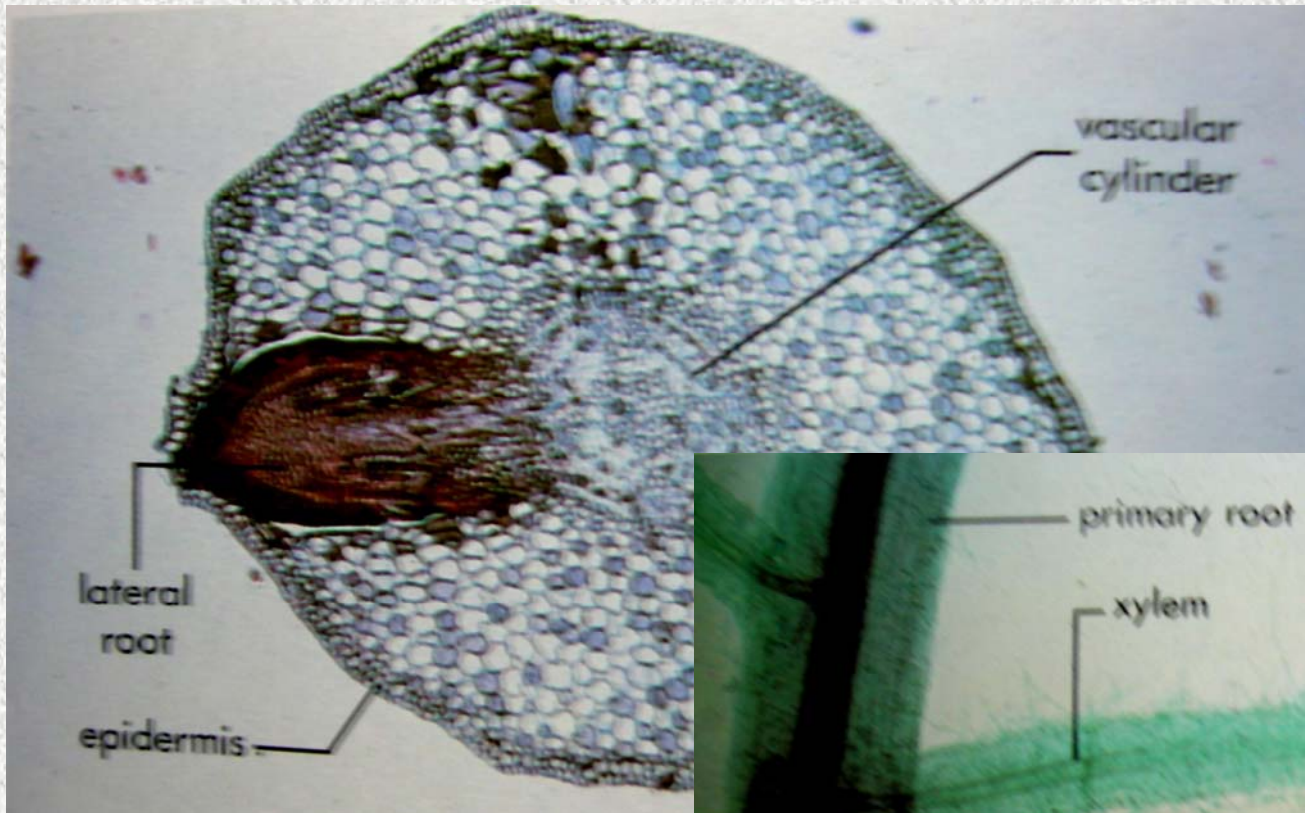
root diagram



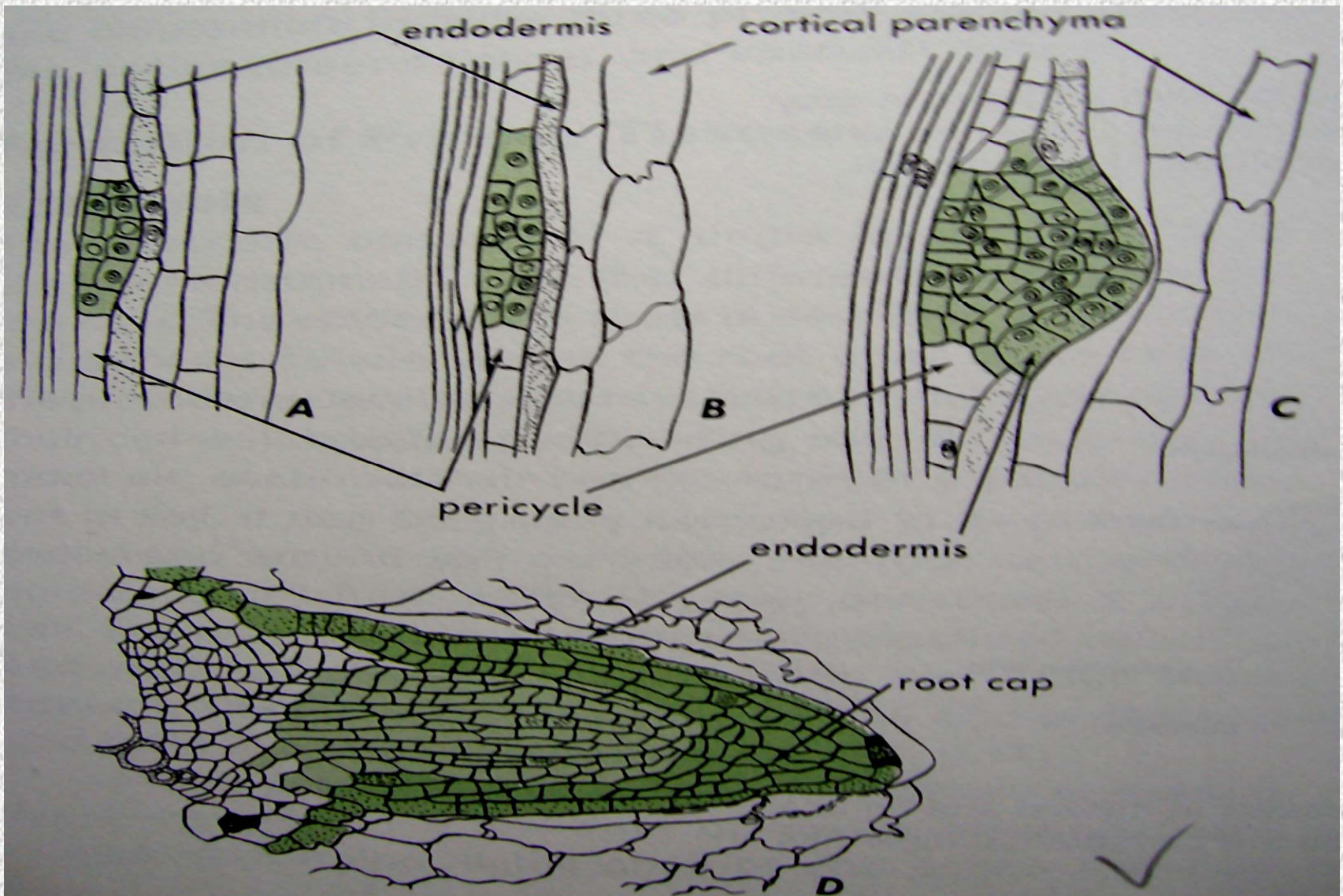
secondary growth



lateral root



lateral root initiation



haustorial root

