

Electrical Characteristics of CuFe_2O_4 Thick Film Ceramics With Different Glass Frit Concentrations Fired at 1000 °C for Negative Thermal Coefficient (NTC) Thermistor

Wiendartun¹, Dani Gustaman Syarif²

1) Department of Physics , UPI, Jl.Dr Setiabudhi 229 Bandung ,
email: wien_upi@yahoo.com

2) PTNBR BATAN, Jl.Tamansari 71 Bandung , email: danigusta@yahoo.com

INTRODUCTION

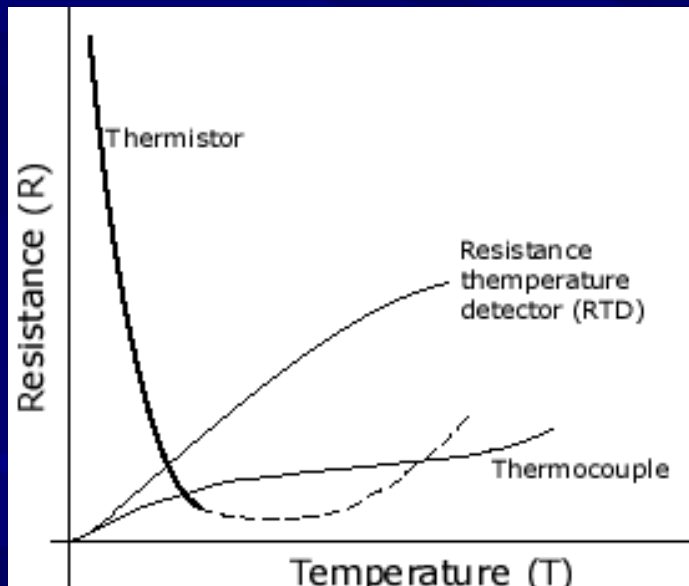
THERMISTOR → Thermally Sensitive Resistor.

NTC CHARACTERISTIC

PRODUCT EXAMPLES

APPLICATIONS

R vs T- THERMISTOR



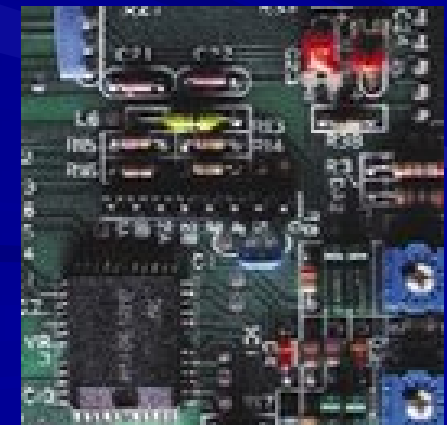
Current limiter thermistor



Incubator



Specialize Thermistor



Computer

INTRODUCTION (Continuation)

■ Important electronic component.

- Sectors: Biomedical, aerospace, instrumentation, communications, automotive and HVACR (Heating, Ventilation, Air conditioning and Refrigeration).

- Application : Temperature sensor measurement, current limiter, circuit compensation, suppression of in rush-current, flow rate sensor and pressure sensor.

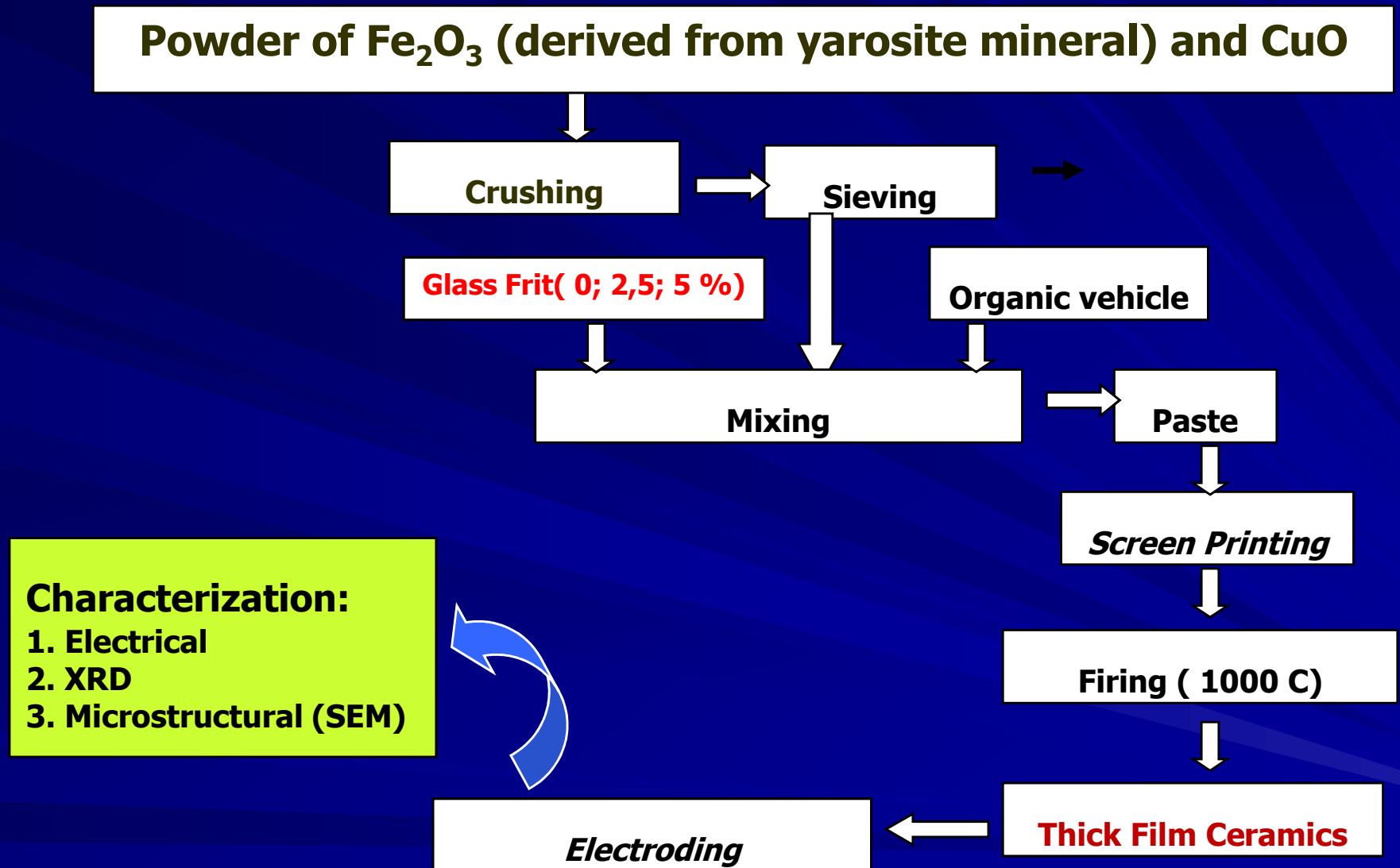
■ It is necessary to get capability in self producing thermistor by utilizing material abundant in Indonesia such us yarosite mineral (Fe_2O_3) \rightarrow CuFe_2O_4 based-thick film for NTC Thermistor, with glass frit concentration (0; 2,5 ;5 weight %)

■ The thermistor in the form of thick film is possible for miniaturization and integration . Advantages : more practical, profitable economically, need a few material, and fired at law temperature.

YAROSITE MINERAL

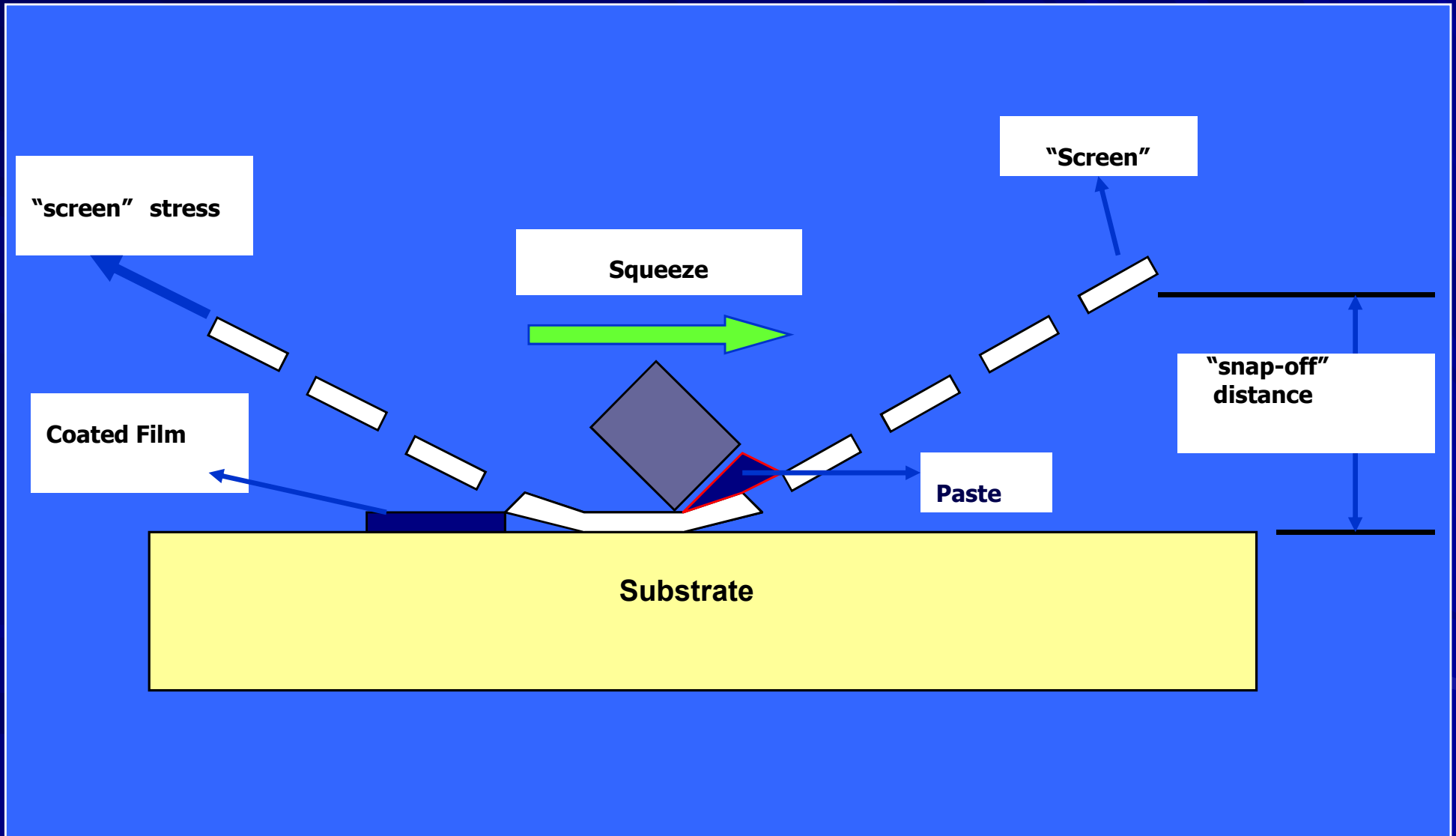


EXPERIMENT :



Flow diagram of the experiment procedure.

SCREEN PRINTING



Electrical Characteristic

- $R = R_0 \cdot \text{Exp.}(B/T)$
- $\ln R = B/T + \ln R_0$
 - $E_a = B \cdot k$
 - $\alpha = - B/T^2$

R = Thermistor resistance

R_0 = Resistance at the infinite temperature

B = Thermistor constant

T = Temperature of thermistor in Kelvin

E_a = Activation energy

K = The Boltzmann constant

A = Sensitivity of thermistor

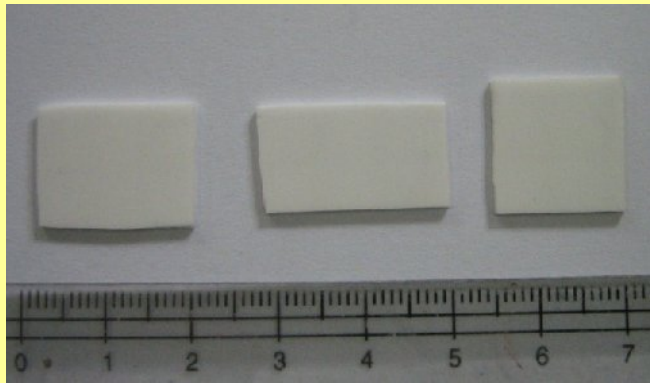
RESULT :
**Chemical composition of Fe₂O₃ powder
derived from yarosite table**

No.	Component	Concentration (Weight %)
1	Fe₂O₃	93.80
2	Al ₂ O ₃	2.54
3	SiO ₂	1.15
4	TiO ₂	1.02
5	MgO	0.19
6	K ₂ O	0.12
7	CaO	0.59
8	Na ₂ O	0.50
9	MnO	0.09

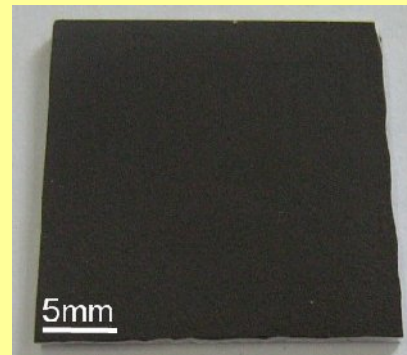
RESULT

Thick Film (yarosite)

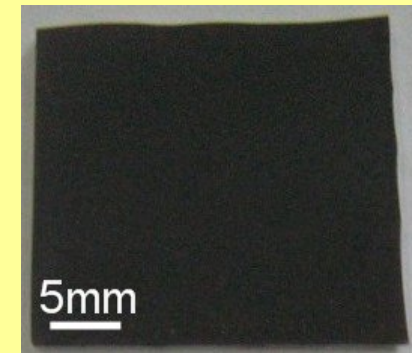
Visual appearance



Alumina Substrat

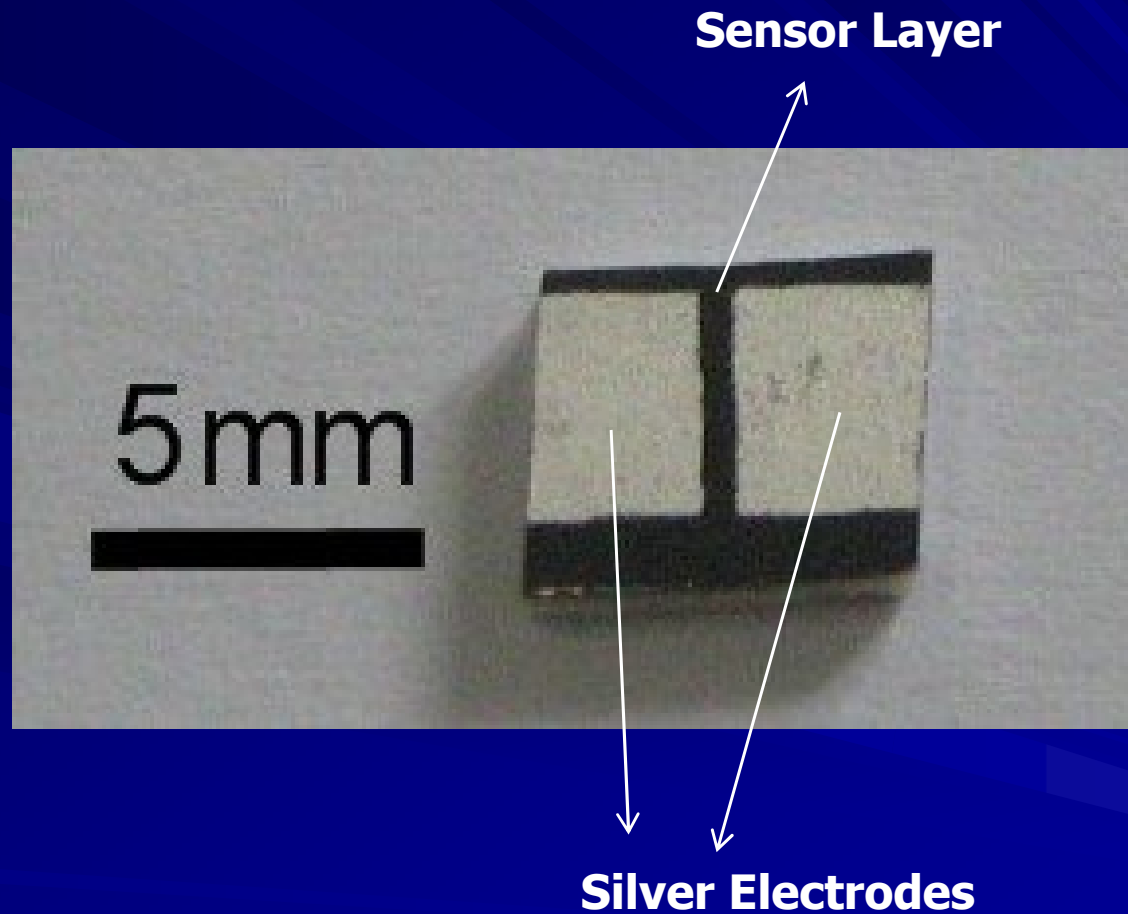


Thick film before fired

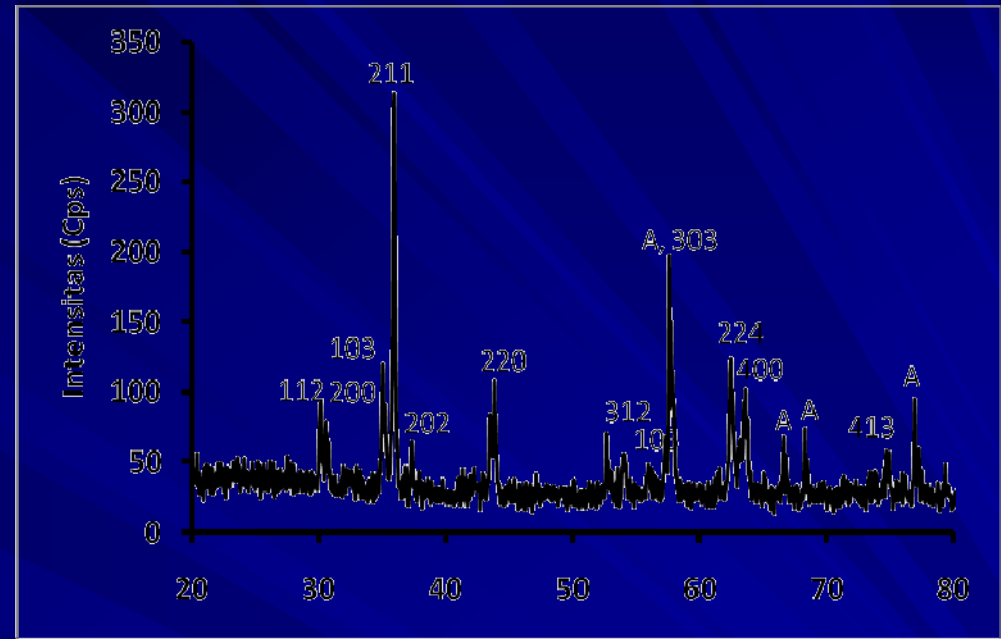
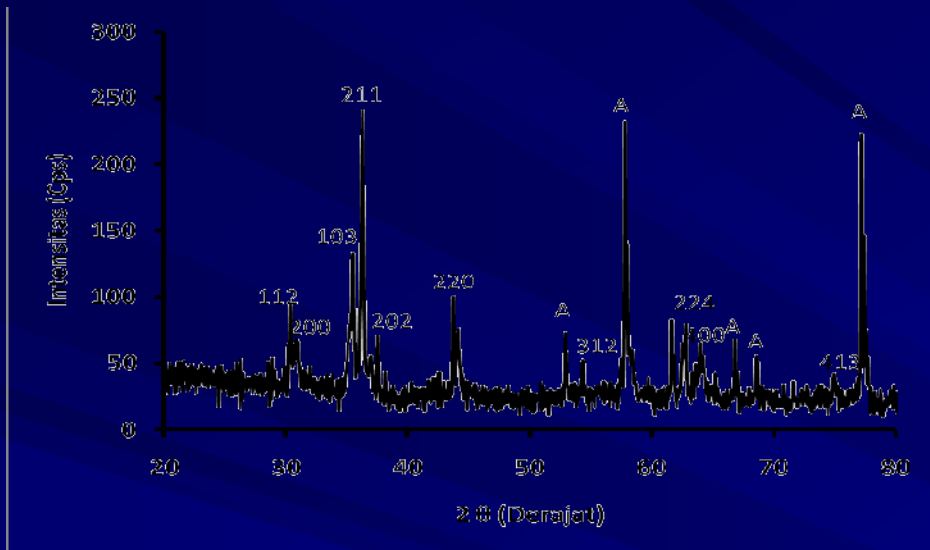


Thick film fired at 1100 C/1 hr

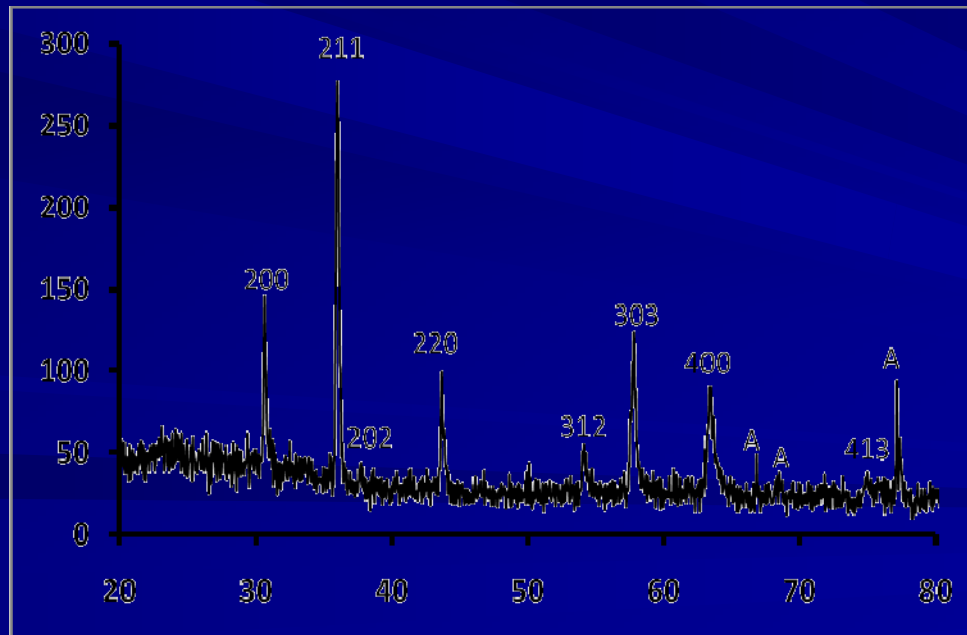
A typical thick film thermistor



RESULT (XRD)



(without glass frit concentration)

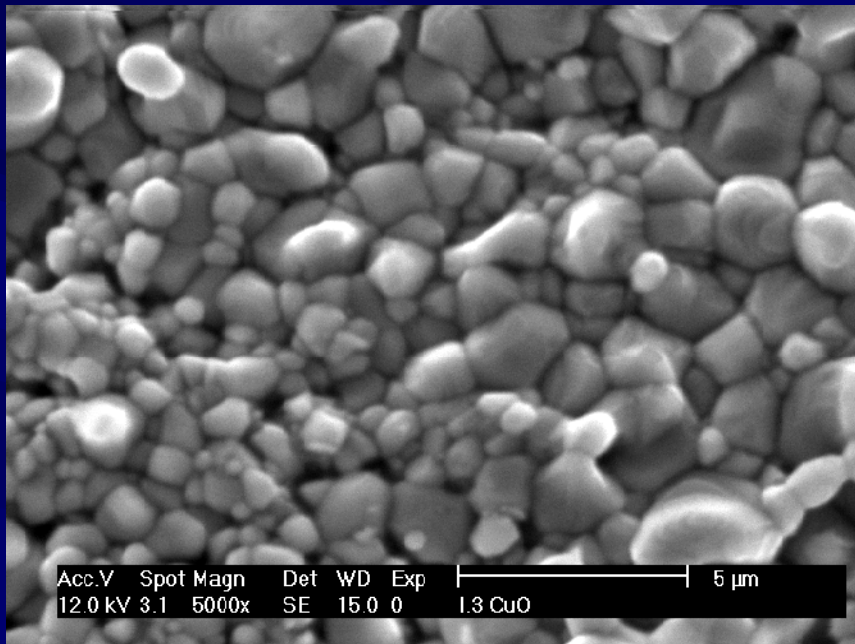


(with 2,5 % glass frit concentration)

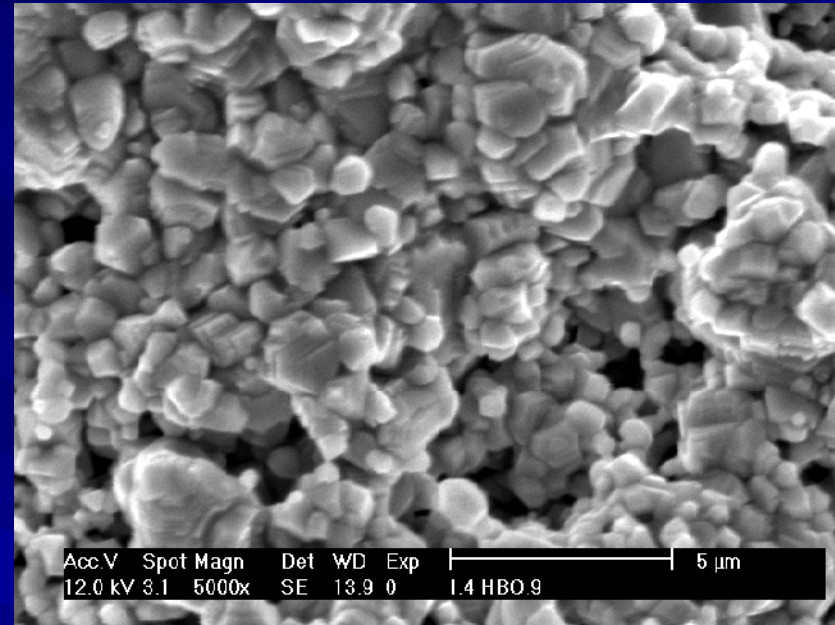
(with 5,0 % glass frit concentration)

XRD profile of CuFe_2O_4 based-thick film

RESULTS (Microstructure)



(without glass frit concentration)

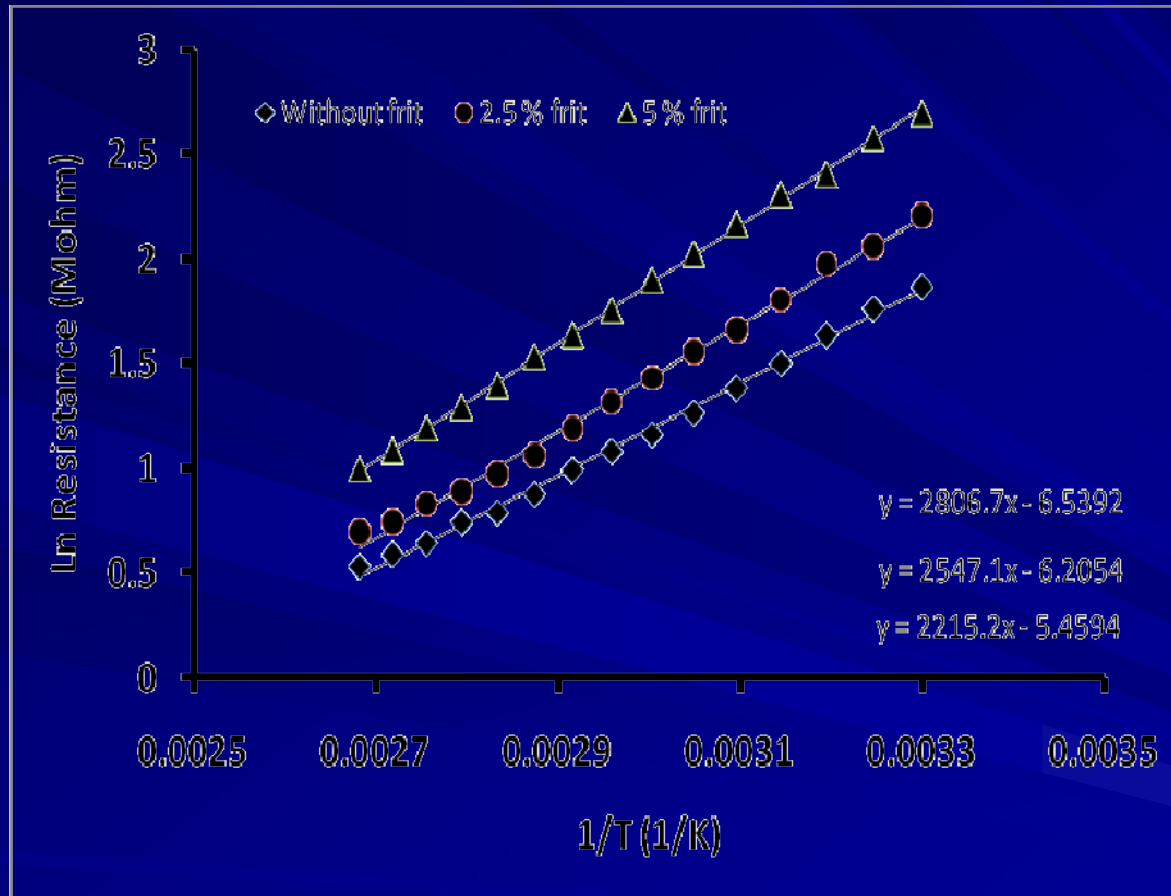


(with 2,5 % glass frit concentration)

Microstructure of the CuFe_2O_4 thick film

RESULTS

(Electrical Characteristics)



The relation between Ln Electrical Resistivity and 1/T of CuFe_2O_4 based-thick film fired at 1000°C for 1 hr (with : 0; 2,5 , 5% glass frit concentration)

Ln resistivity (ρ) vs $1/T$ of CuFe_2O_4 thick film ceramics.

RESULTS

(Electrical Characteristics)

Table of electrical characteristics of CuFe_2O_4 thick film ceramics

(with : 0; 2,5 , 5% glass frit concentration)

No.	Frit (%)	B (K)	Alfa (%/K)	R _{SR} (Mohm)	
1.	0	2215	2,46	6,9	
2.	2,5	2547	2,83	9,8	
3.	5	2807	3,12	16,7	

Market requirement for :

B is ≥ 2000 °K

α is ≥ 2.2 %/°K [7]

$\rho_{RT} = 10 \text{ ohm.cm}^{-1} \text{ Mohm.cm}$ [4].

CONCLUSIONS

- CuFe_2O_4 thick film ceramics utilizing Fe_2O_3 derived from yarosite mineral have been well fired at 1000°C for 1 hour. with : 0; 2,5 , 5% glass frit concentration.
- All of the thick films crystallize in tetragonal spinel.
- The SEM images showed that the effects of glass frit concentration make the grain size was smaller..
- Electrical data showed that the larger the glass frit concentration, the larger the : resistance, thermistor constant and sensitivity.
- The value of thermistor constant (B) = $2215\text{-}2807^\circ\text{K}$ and room temperature resistance (R_{RT}) = $6,9\text{-}16,7 \text{ M}\Omega$ of the produced CuFe_2O_4 ceramics fitted market requirement.

THANK YOU

ACKNOWLEDGMENT

The authors wish to acknowledge their deep gratitude to Directorate General of Higher Education(DIKTI), Ministry of National Education of Indonesian Government for financial support under *HIBAH BERSAING* program with contract No. 2784/H.40/PL/2009, 07 Mei 2009

LAMPIRAN *APLIKASI THERMISTOR-1*



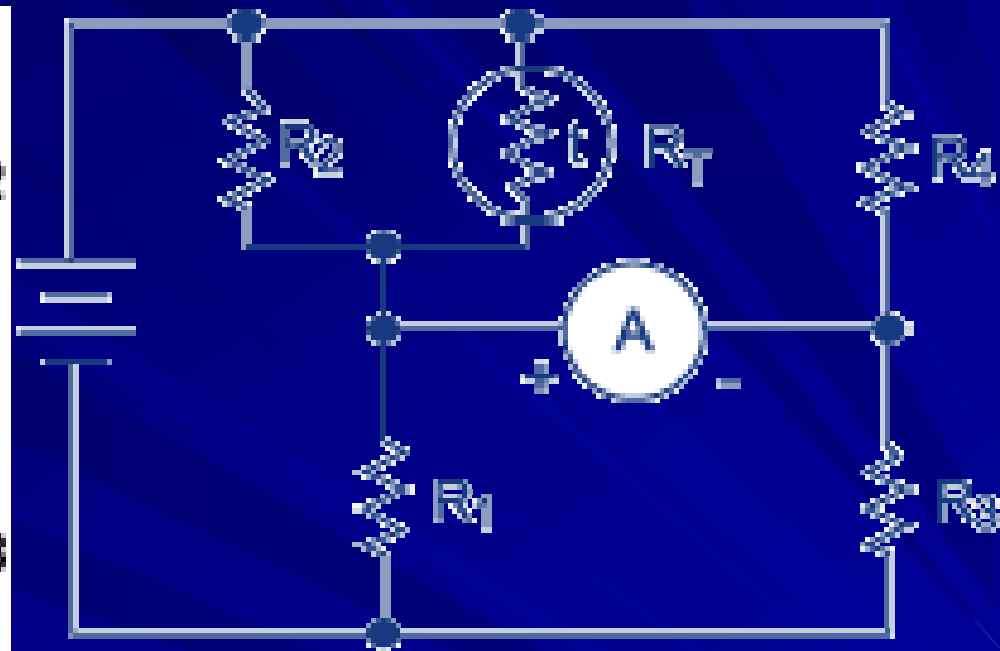
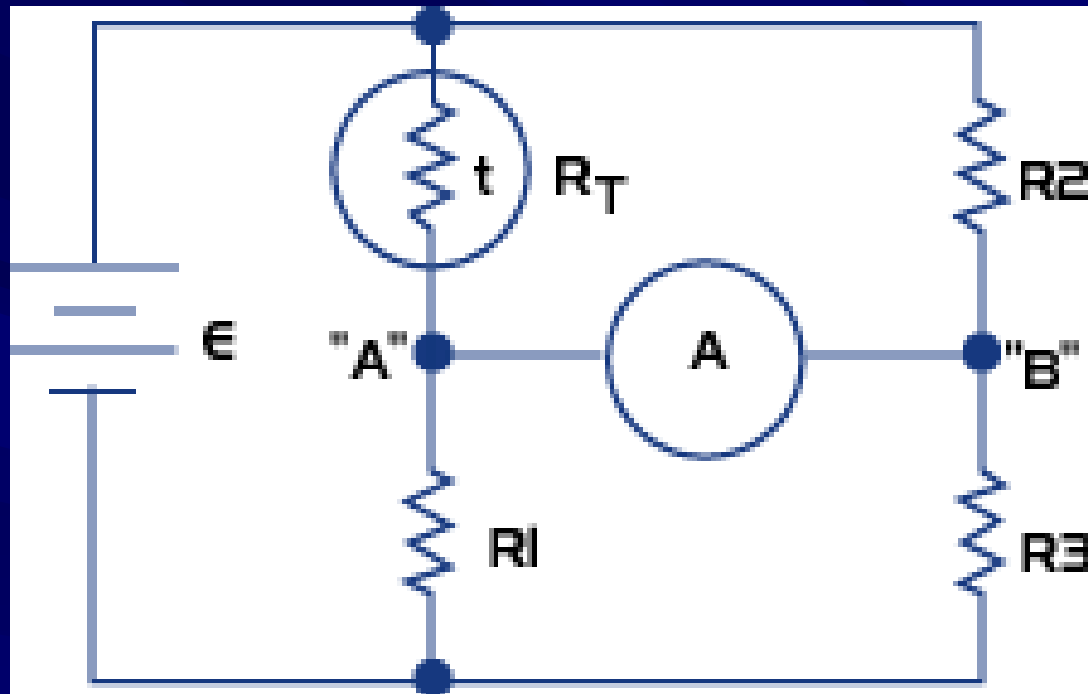
Inkubator Bayi

APLIKASI THERMISTOR-2



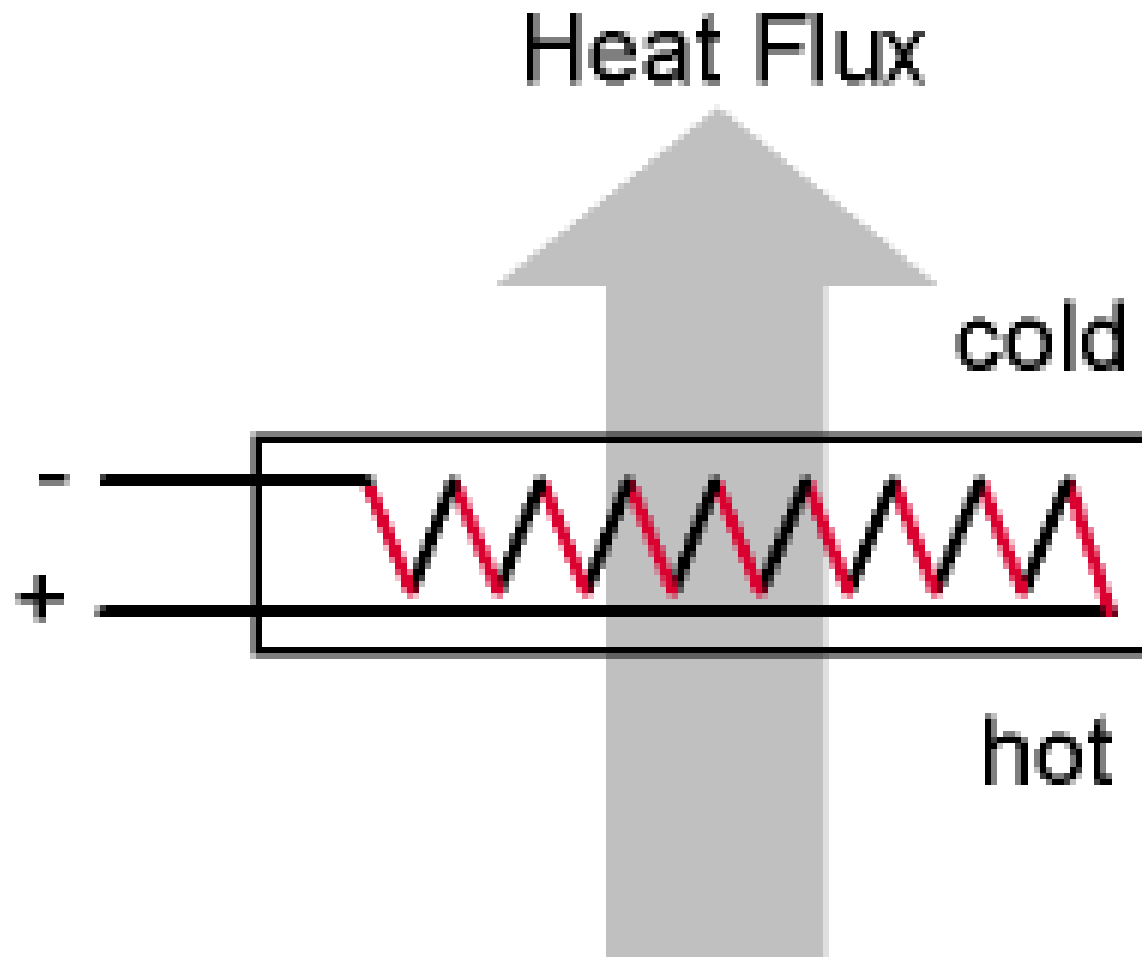
Komputer

APLIKASI THERMISTOR-3



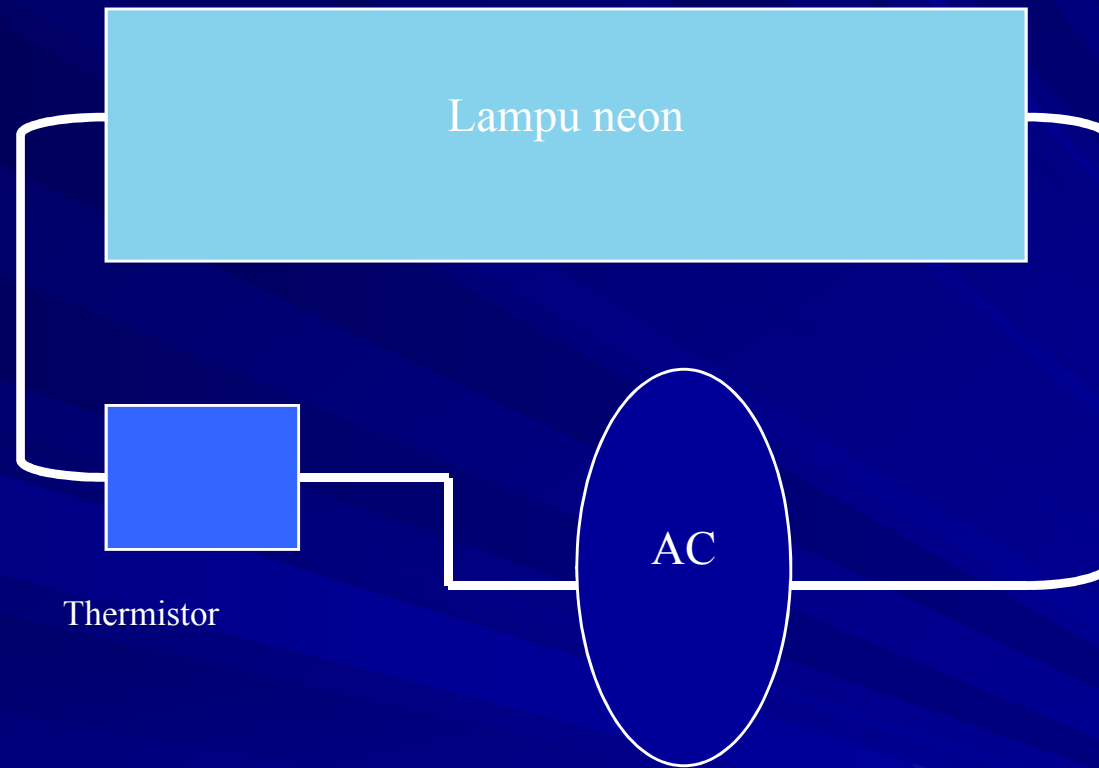
Pengukur suhu

APLIKASI THERMISTOR-4



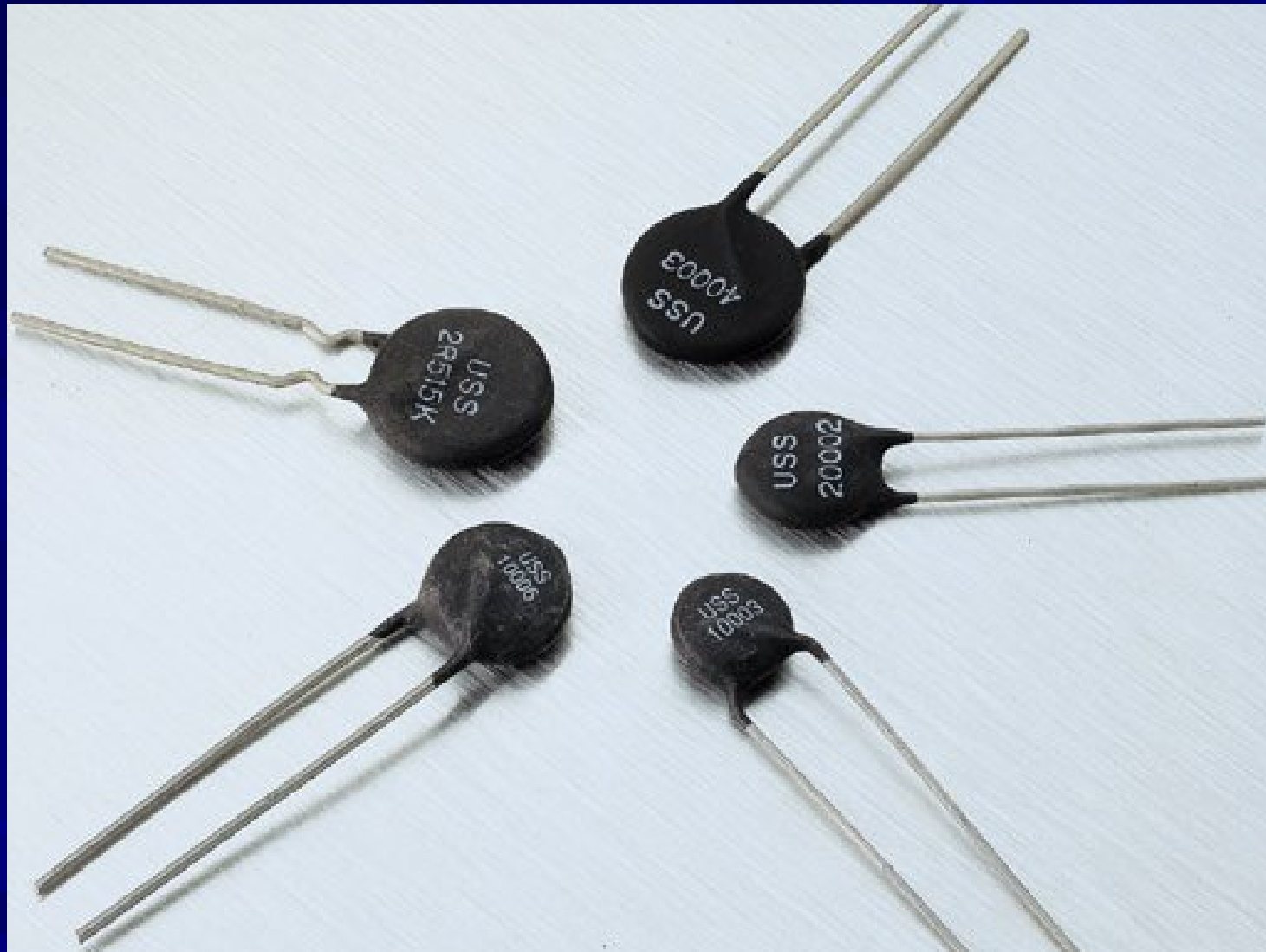
Sensor Aliran Air

APLIKASI THERMISTOR- 5



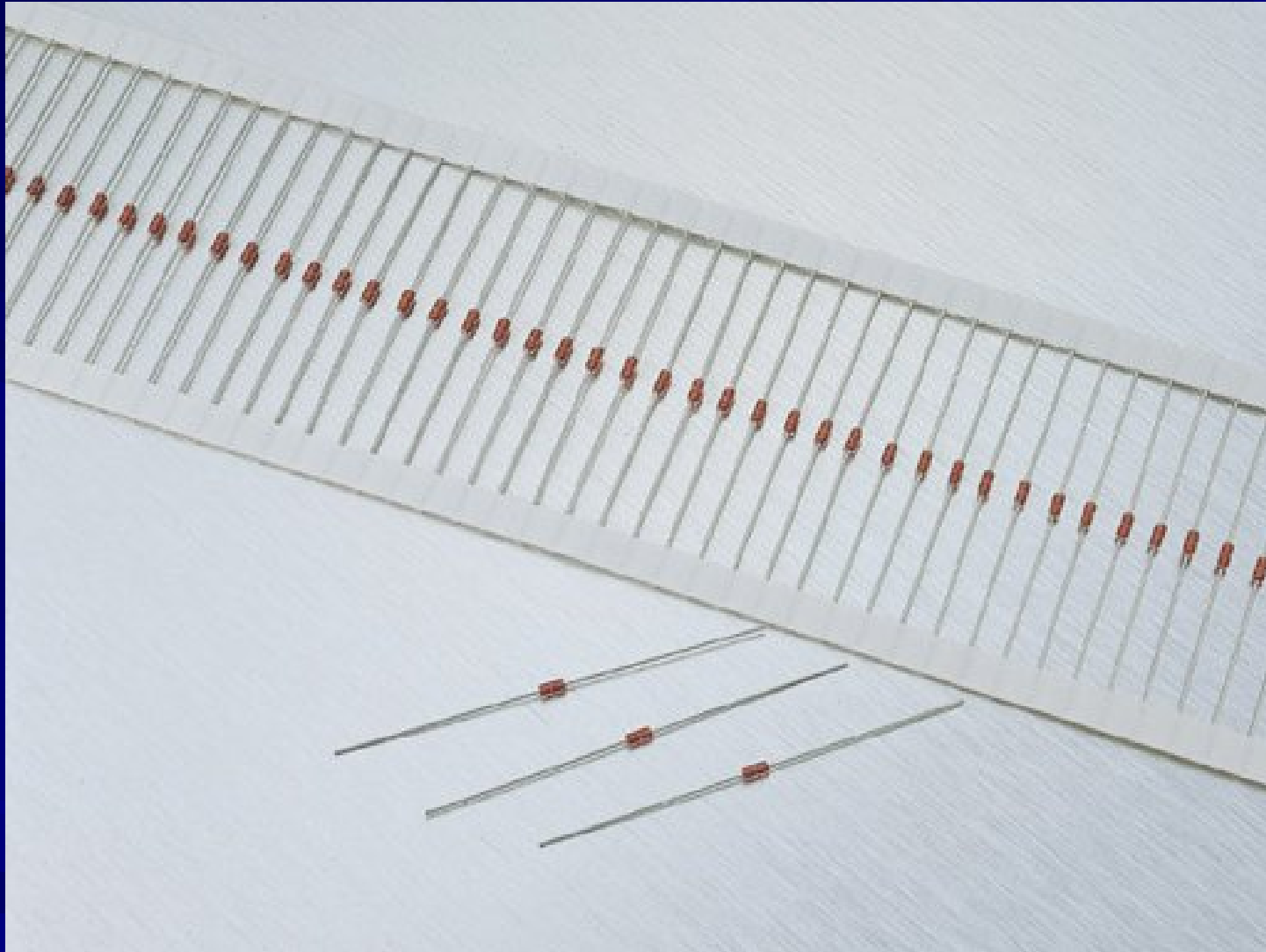
Pembatas Arus Listrik

BENTUK THERMISTOR-1



Thermistor Pembatas Arus

BENTUK THERMISTOR-2



Thermistor Gelas

BENTUK THERMISTOR-3



Thermistor Khusus

BENTUK THERMISTOR-4



Thermistor Lead Epoxy