

Capillary Action

Gaya Adhesi adalah gaya interaksi antara molekul yang berbeda jenis

Gaya Kohesi adalah gaya interaksi antara molekul yang sejenis
Gaya inilah yang mempertahankan air selalu bersama.

Adhesi > kohesi

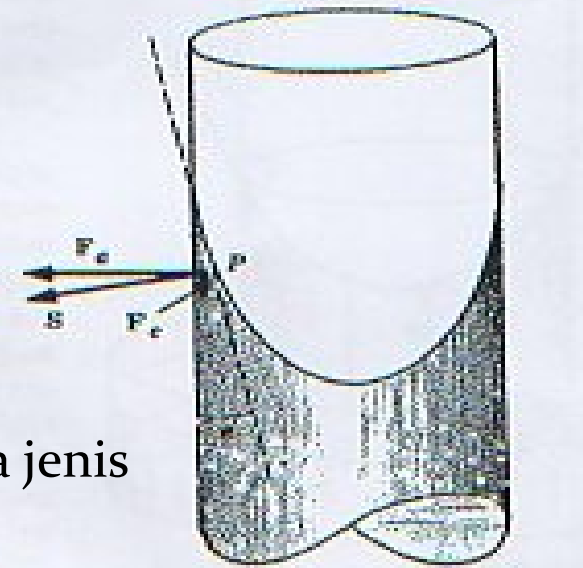


Air

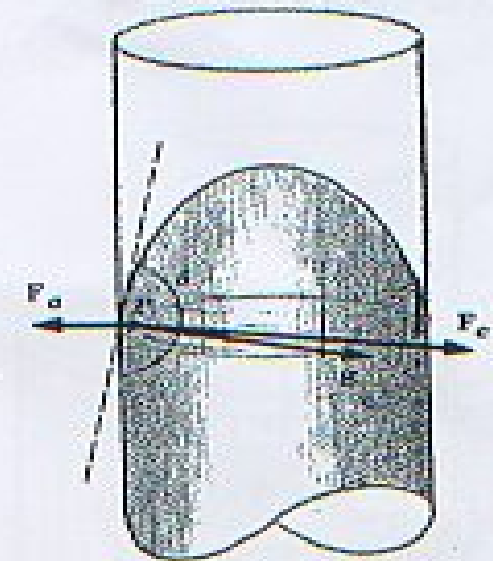
Kohesi > Adhesi



Raksa



a



b

FIGURE 9.12
Meniscus of liquids in capillary tubes. (a) When the adhesive force is greater than the cohesive force, the meniscus is concave. (b) When the adhesive force is less than the cohesive force, the meniscus is convex.

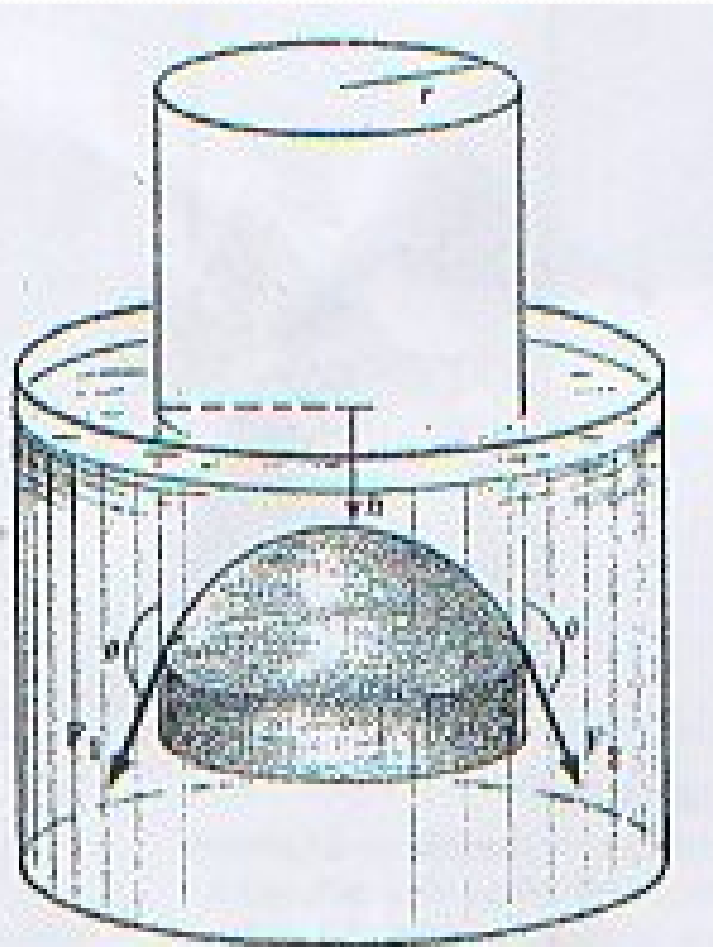


FIGURE 9.14
Surface tension depressing a
column of mercury in a capillary.

$$h = \frac{2\gamma \cos \theta}{\rho g r}$$

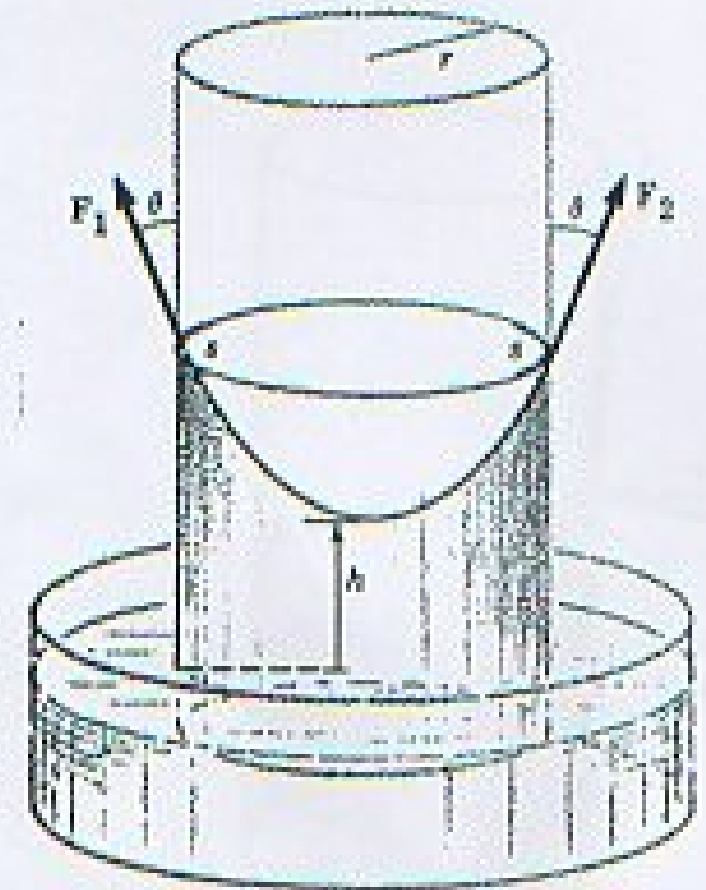


FIGURE 9.13
Surface tension supporting a
column of water in a capillary.

