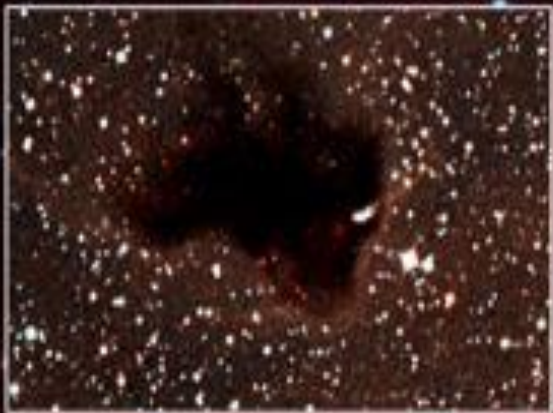


**Structure Theory of
Twisted Toeplitz Algebras
and Ideal Structure of the
(untwisted) Toeplitz Algebras
of Ordered Groups**

Rizky Rosjanuardi

30198013

C^* -algebra





Example: alg. $B(H)$ of operators

Representation : B(H)



Classes of C^* -alg.



Toeplitz algebra

Summary

C^* -algebra



alg. of operators

gen. by isometry

Toeplitz alg.

Ideal Structure

1
2
3
4
5
6
7
8
9
10
11
12

M
u
r
p
h
y

Douglas
Ji & Xa

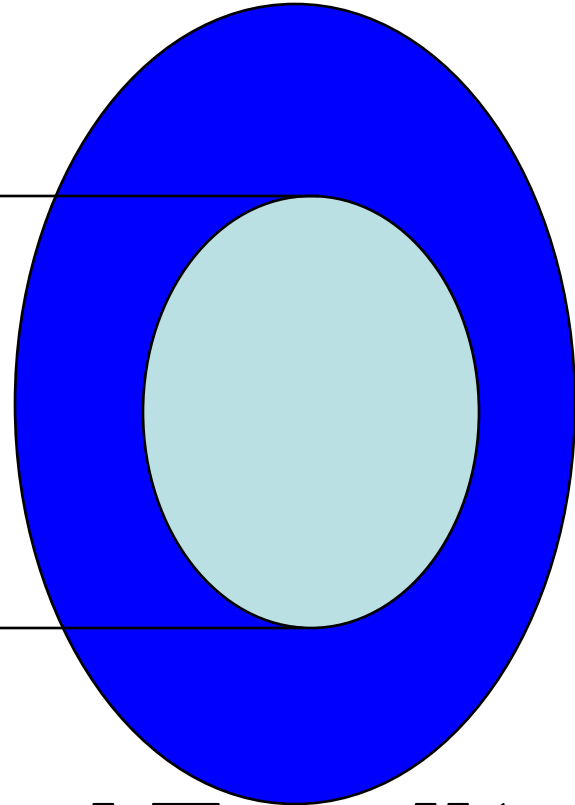
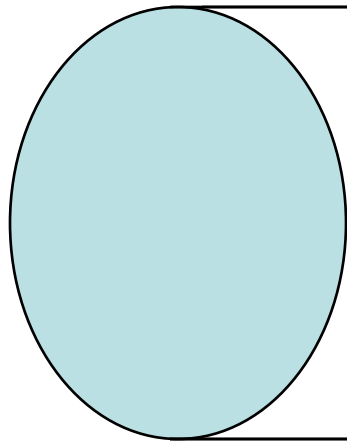
Adjji & Raeburn



Results

Structure Theory

Toeplitz alg.



Twisted Toeplitz alg.

Ideal Structure



Primitive

X

A serene sunset scene over a calm ocean. The sun is low on the horizon, creating a bright, shimmering reflection on the water's surface. The sky is a soft, golden-yellow color. In the foreground, the dark, wet sand of a beach is visible, with a small, dark rock or piece of driftwood partially submerged in the shallow water. The overall mood is peaceful and reflective.

Terima kasih







