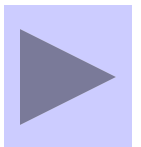


PENYAJIAN DATA

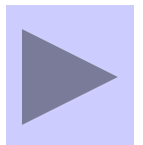
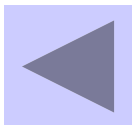
Oleh :
Dewi Rachmatin



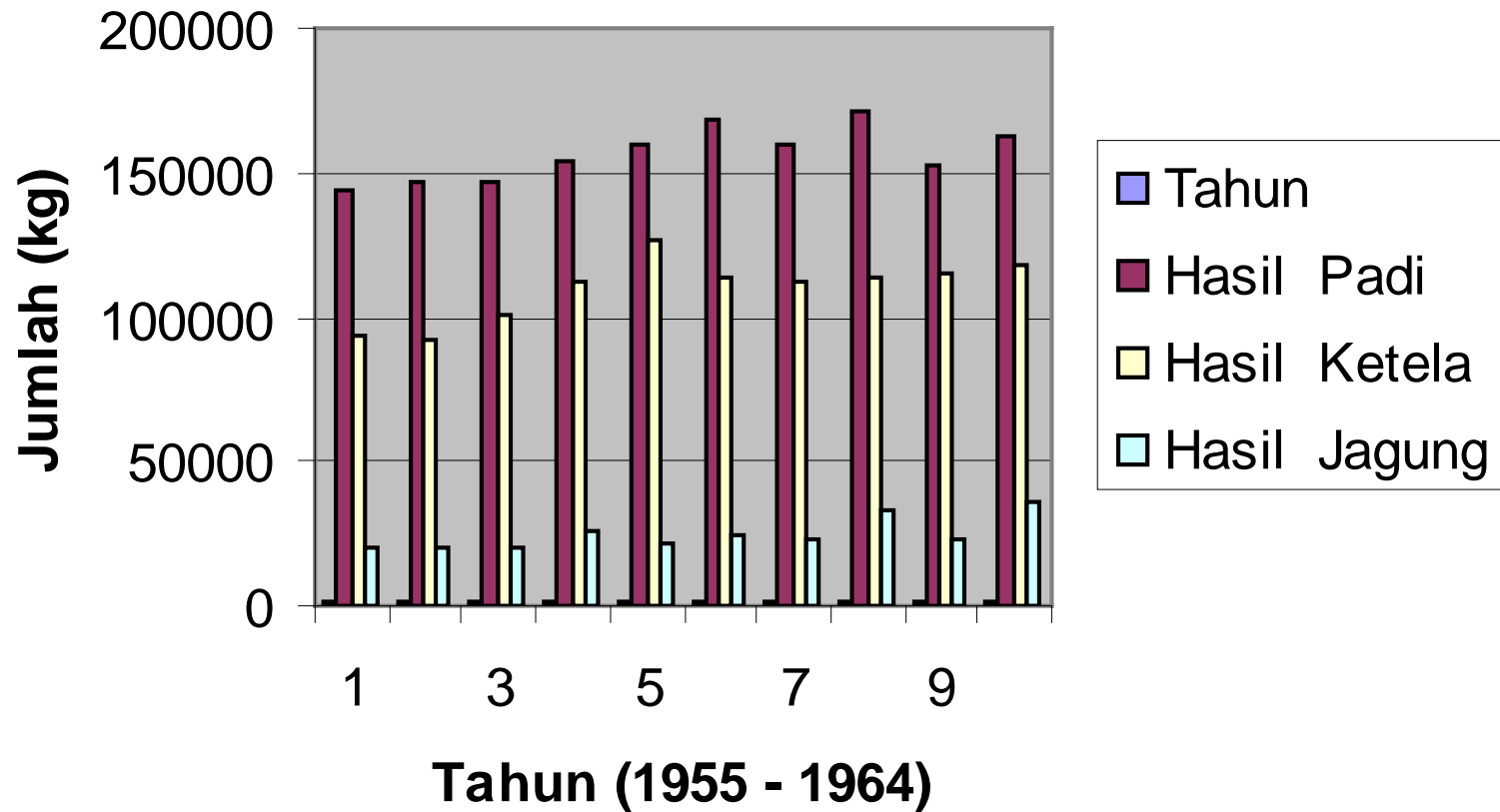
Penyajian Data

Tabel 1 : Hasil Padi, Ketela dan Jagung di Indonesia

Tahun	Padi	Ketela	Jagung
1955	144.324	93.170	19.708
1956	146.188	91.409	19.647
1957	146.769	101.182	19.601
1958	153.443	112.783	26.342
1959	159.500	126.969	20.920
1960	168.600	113.769	24.601
1961	159.001	111.895	22.831
1962	171.113	113.860	32.429
1963	152.561	115.752	23.586
1964	162.530	117.464	36.497



Hasil Padi, Ketela dan Jagung di Indonesia



Hasil Padi, Ketela dan Jagung di Indonesia

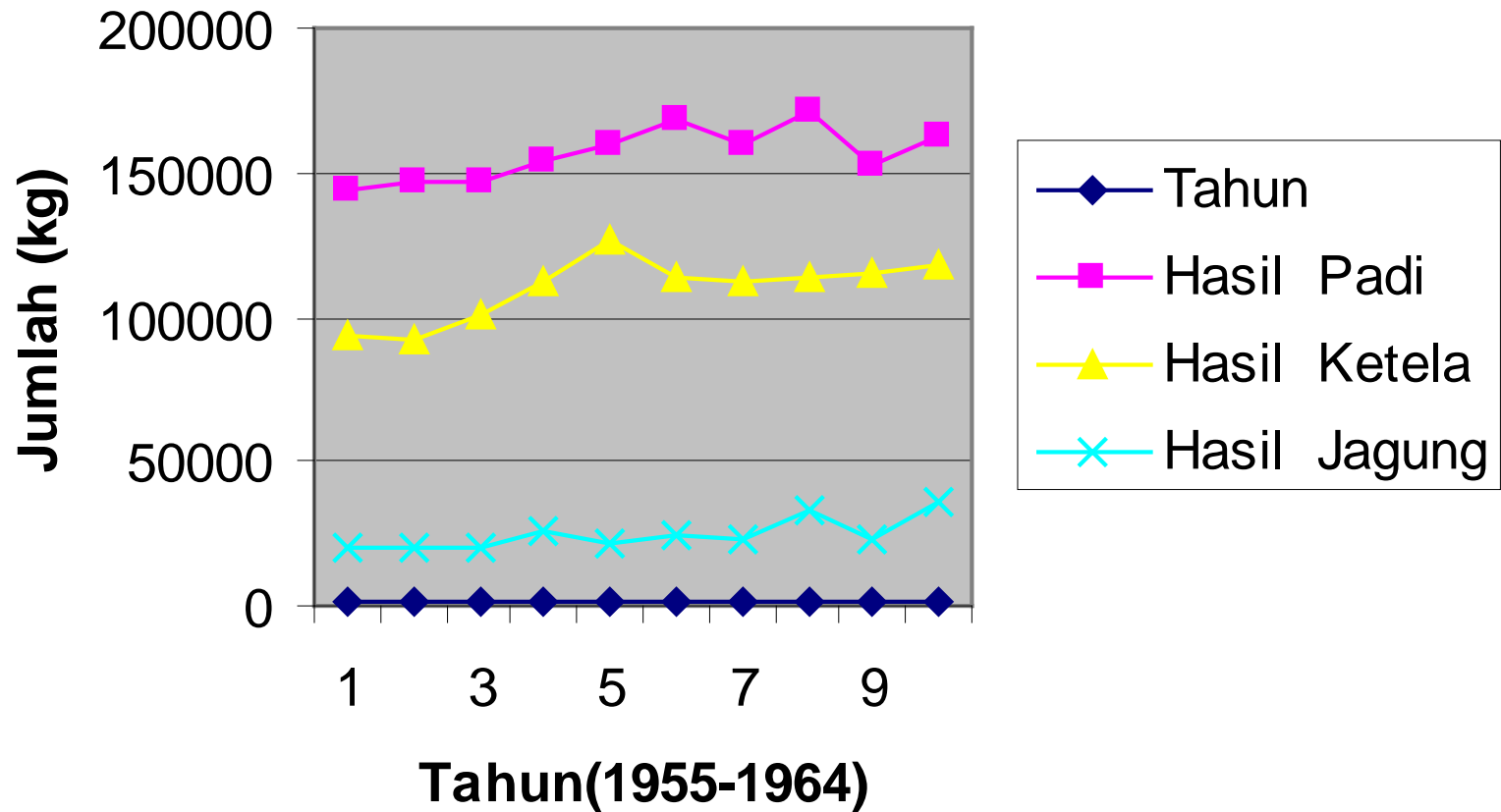
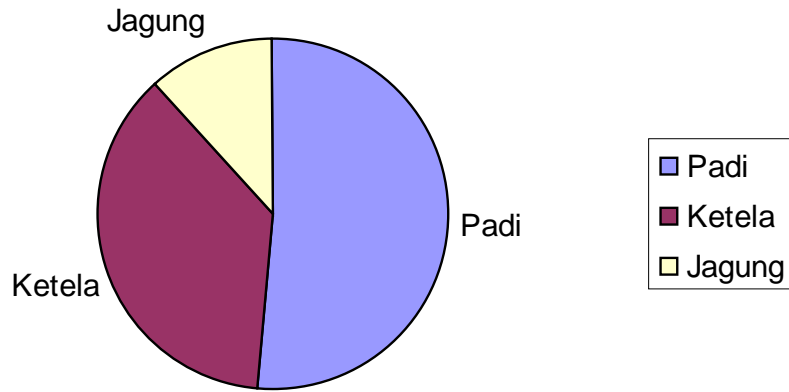
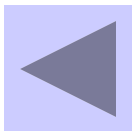
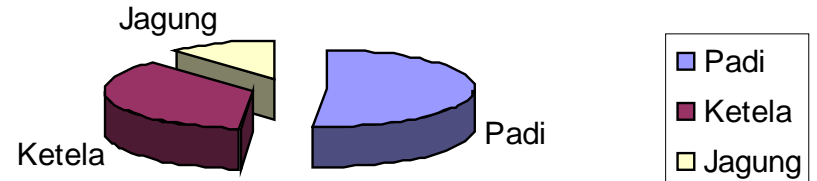


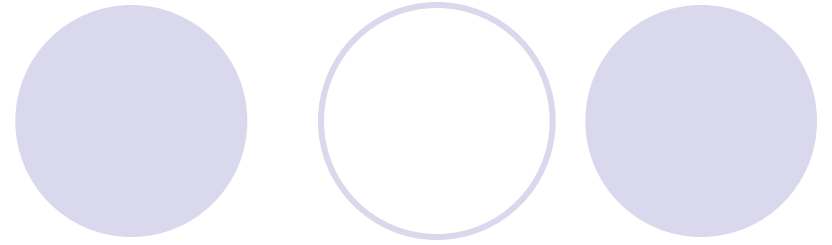
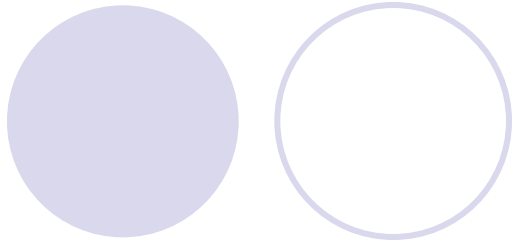
Diagram Lingkaran (Pie)

Hasil Padi, Ketela dan Jagung Tahun 1964



Hasil Padi, Ketela dan Jagung Tahun 1964





- Daftar Distribusi Frekuensi

