



**INFORMATION MANAGEMENT
IMHERE PROJECT**







DATA COLLECTION

ANALYSIS PHASE

Next Page

UPI ICT EXISTING RESOURCES 2007

ICT Resources

- Connecting 8 client buildings in Campus Bumi Siliwangi to Network Operation Center with fiber optic network backbone.
- Providing network infrastructure equipment support for network center and 8 client buildings.
- Providing basic equipment (phase 1) for telecommunication and data application infrastructure integration
- Improving database management system (DBMS) from business DBMS to enterprise DBMS
- Accounting Management System development
- Improving Academic Information System
- Replacing 300 unit of computer for student computing
- Improving Multimedia Learning System
- Providing Video Teleconference Facilities
- Document Management System development (phase 1)

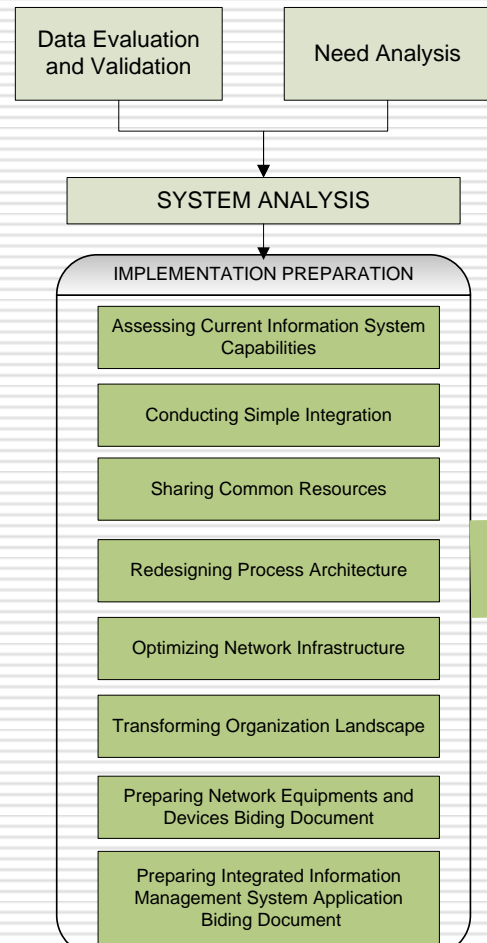
IMHERE 2007 products

- Finance Management System:
 - Blue print for computer system application
 - Standard operating procedure for finance management system
- Asset and Facilities Management System:
 - Blue print for computer system application
 - Standard operating procedure for Asset and Facilities management system
- Human Resources Management System:
 - Blue print for computer system application
 - Standard operating procedure for Human Resources management system

UPI ICT EXISTING PLAN 2008

Policy	Standardization	Infrastructure	Hardware	Software	Content
<ul style="list-style-type: none"> • Updating UPI ICT Resources Policies • Developing UPI Information Integration Policies • Developing SOPs for managing and use of ICT resources • Developing SOPs for UPI Integrated information System 	<ul style="list-style-type: none"> • Technology Standard • Infrastructure Standard • Hardware Standard • Software Standard • Content Standard • Standard Procedure • Human Resources Qualification 	<ul style="list-style-type: none"> • Upgrading Internet Connection Capacity • Upgrading WAN Capacity • Enlarging Intranet network coverage • Improving network equipments and devices • Revitalizing Network Function • Upgrading and improving database capacity 	<ul style="list-style-type: none"> • Procuring Network security System Equipments • Building NOC • Procuring Server for network management • Procure server for learning resources • Improving Computer Laboratory Facilities 	<ul style="list-style-type: none"> • Software Licensing • Merit System • Learning Management System • Building Security System • Academic Information System Integration 	<ul style="list-style-type: none"> • Web content update • Learning Management System Content • Learning Multimedia Resources • Academic Information System Content Development

IMHERE Implementation Plan 2008





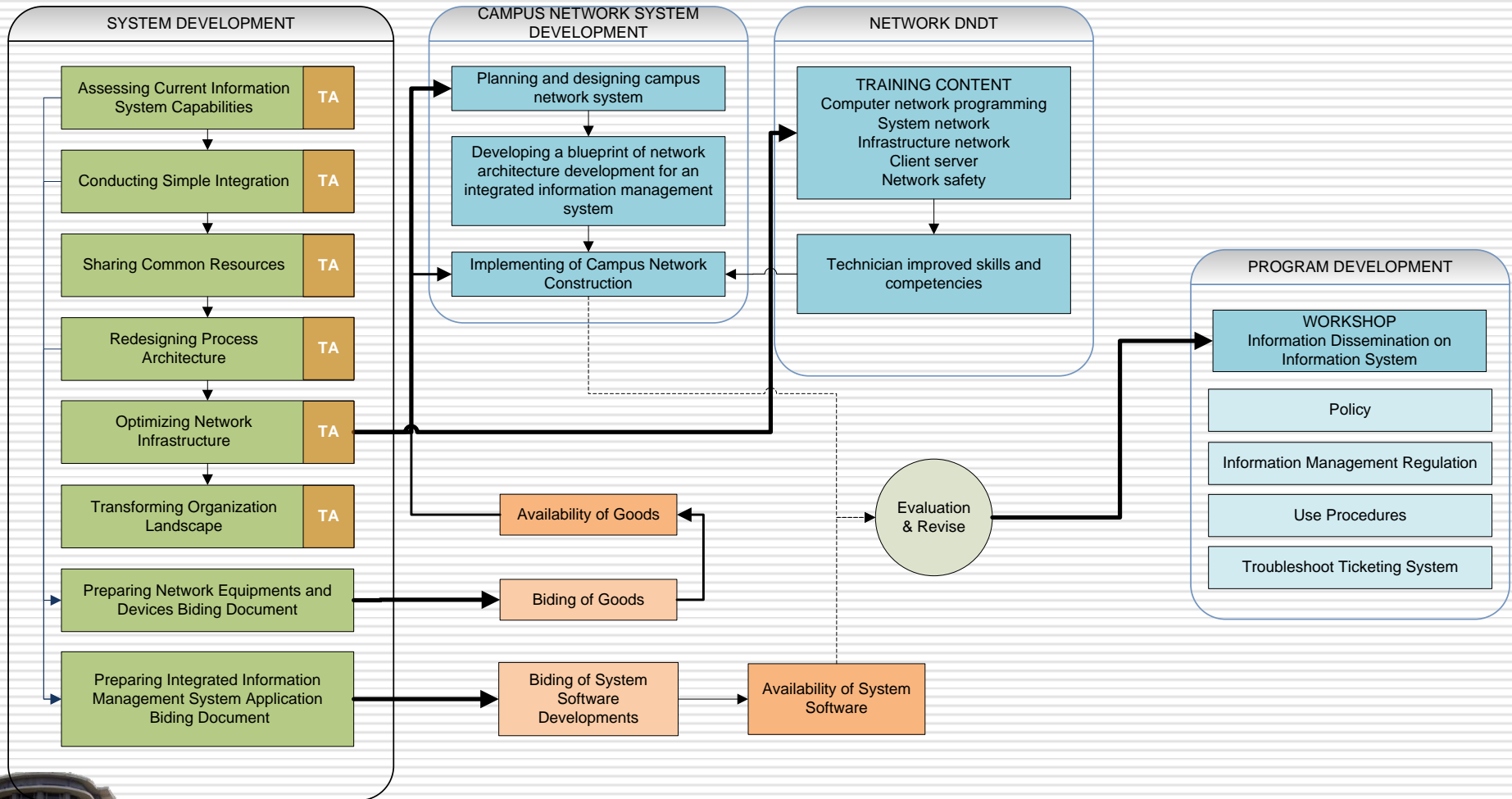
PREPARATION

Previous Page

IMPLEMENTATION PHASE

DEVELOPMENT

EXECUTION PREPARATION

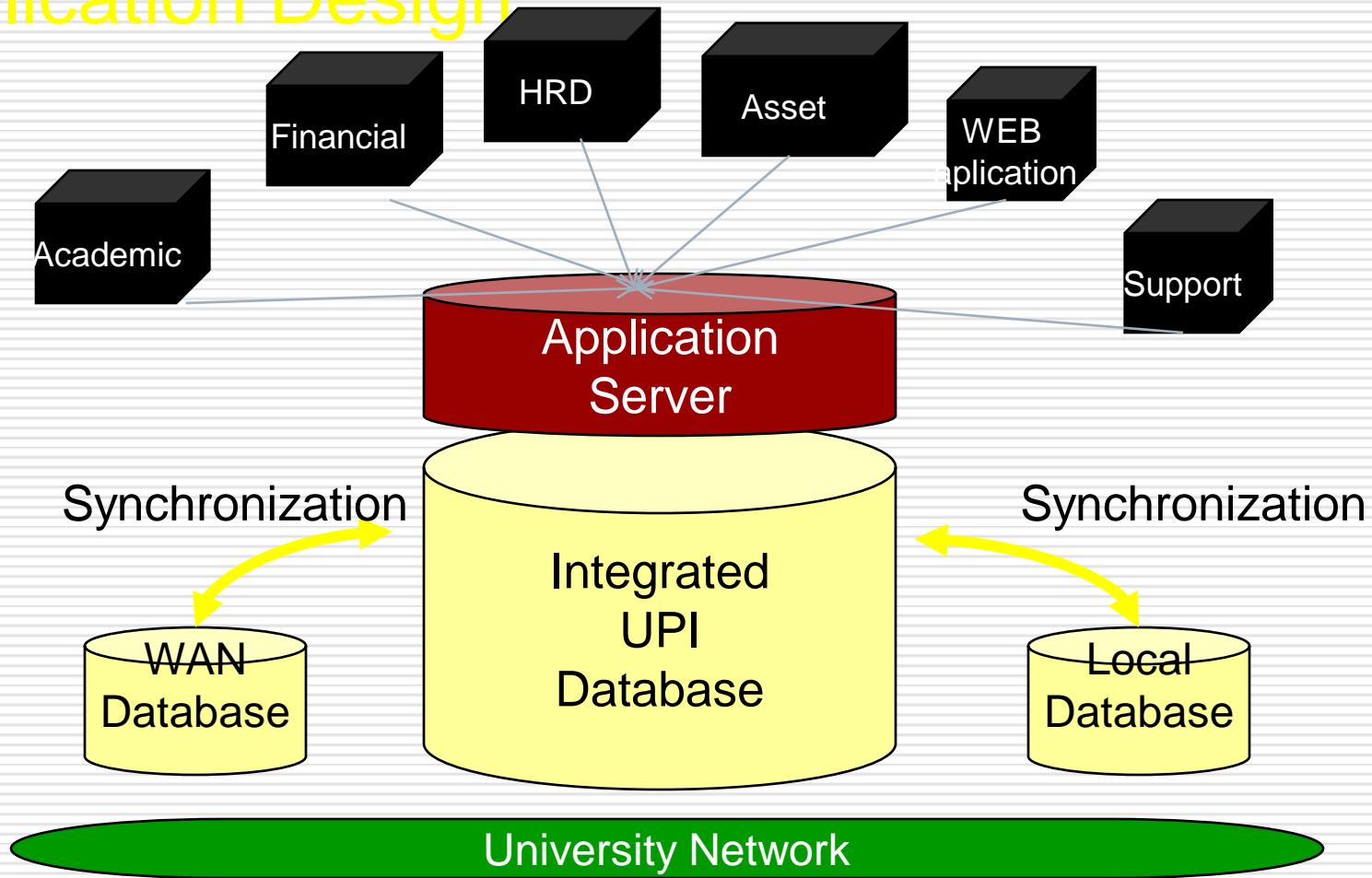


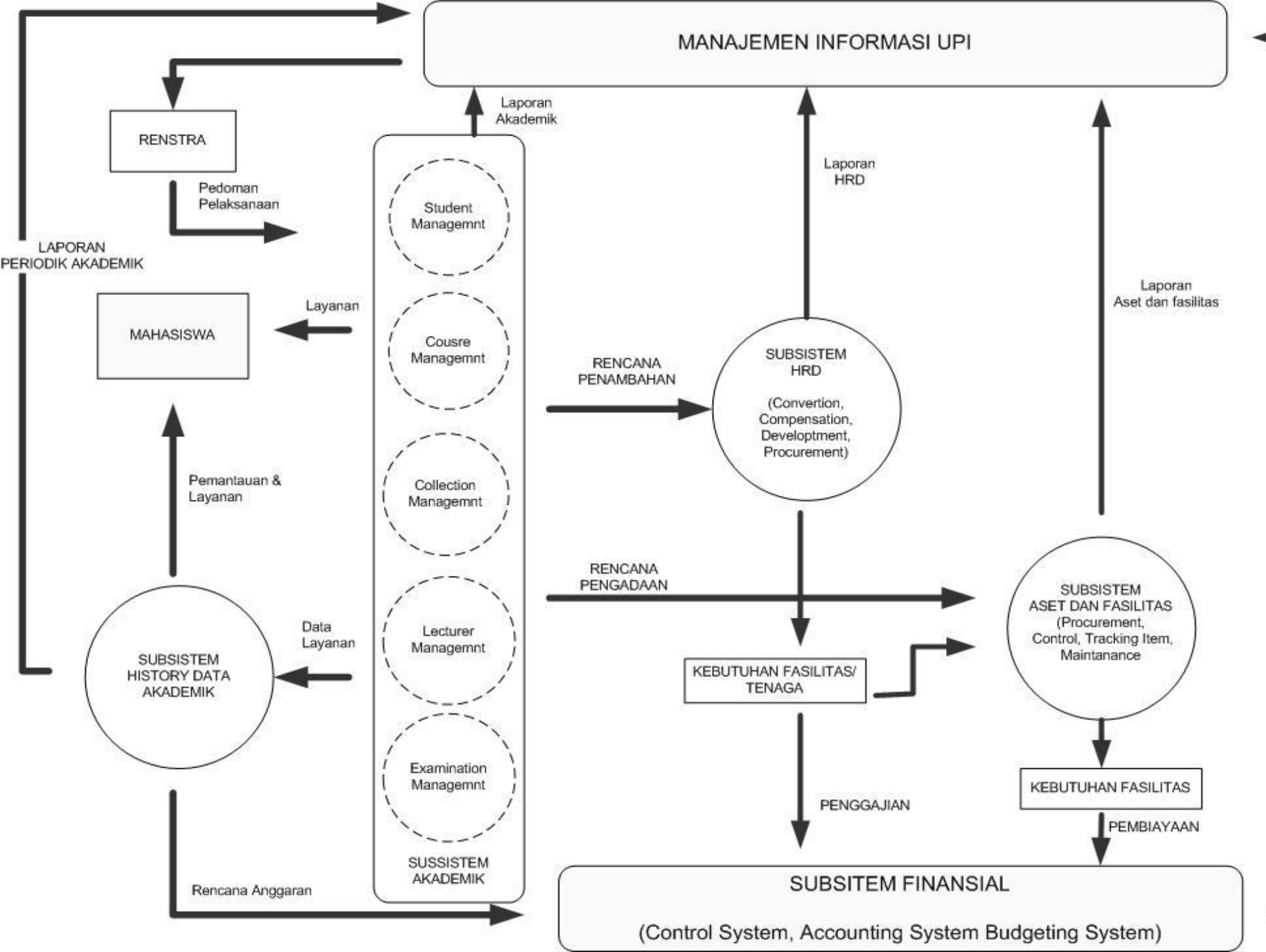


RANCANGAN MANAJEMEN INFORMASI

UPI:

Application Design







Information Distribution

Distribute

Synthesize

Select

Organize

Gather

Akses Via SMS/WAV

Akses Via Telepon / Help Desk Application

Akses Via Mobile Computer

Akses Via Internet / www.upi.edu

Portal Universitas

INTERNAL CUSTOMER & PARTICIPANT

Web Interface Jurusan/Program Studi

Web Interface Fakultas

Web Interface Rektorat

Web Interface Kantor/Satuan/Dit/Unit

Representasi Data / Grafik

Agregasi Informasi

Berita / Event / Agenda

DSS / Data Analysis

Sistem Sumber Daya Informasi / SSDI UPI
(Portal Layanan Informasi Berbasis Intranet)

SISTEM INFORMASI UNIVERSITAS PENDIDIKAN INDONESIA

Sistem Informasi Akademik

Sistem Informasi Keuangan

Sistem Informasi SDM

Sistem Informasi Asset & Fasilitas

Basis Data Universitas
(Platform dan Teknologi)

VALUE CHAINS ANALYSIS

Aktifitas Akademik
(Primary Activity)

Aktifitas Keuangan
(Support Activity)

Aktifitas Sumber Daya Manusia
(Support Activity)

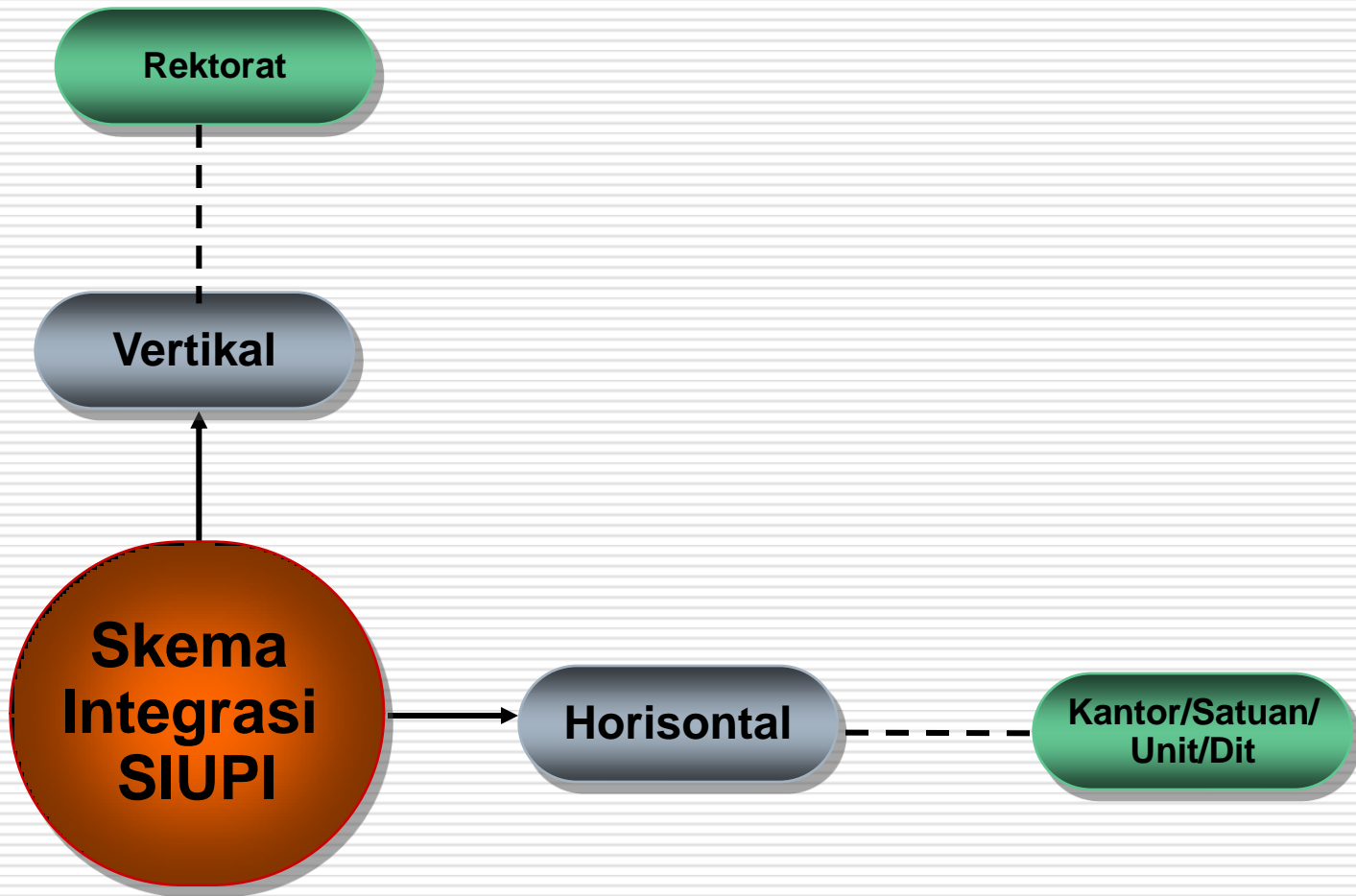
Aktifitas Asset dan Fasilitas
(Support Activity)

UPI's ICT GOVERNANCE

Sumber Daya TIK UPI
(Insfrastruktur Harware dan Jaringan)

Tupoksi & SOP Organisasi UPI

Sumber Daya Manusia UPI







Terima Kasih

