



# NEXT GENERATION TEACHER'S PROJECT

The Integration of Information and  
Communication Technology (ICT) into  
Development of Future Teacher Education  
Program in Teachers Education Institutions  
(TEI) in Indonesia.

- SELF-EVALUATION of UPI which have developed ICT
- Mapping of Teaching Staff and Pre-service Teacher ICT Competences
- ICT 4 EDUCATION in UPI



# SELF EVALUATION



Policy



Human Resources



Organization



Infrastructure



ICT Programs in UPI

ISSUES

EXISTING

PROGRAMS



- ICT culture transformation through Management Change,
- ICT infrastructure development which supports management implementation, teaching-learning process, research, and community services,
- optimal and integrated UPI management process definition,
- intensive communication during the implementation to minimize discrepancies between needs and system function.



# HUMAN RESOURCES



## TEACHERS PROFILE

- 1313 lecturer
- Majority Master Degree
- Lecturer student ratio 1:20
- 62 professor and 333 below lecturer
- about 70% basic ICT concept & skill



## STUDENTS PROFILE

- 25.762 students increase to 30.000 this year
- 5,447 Diploma 2, 6 Diploma 3, 12,415 S1, 1,197 Masters, 564 Doctorates.
- Since 2003 use ICT as a part of learning process



## EMPLOYEE'S PROFILE

- 715 employee's
- Spread in 6 Faculty, 1 post graduate program and other supporting unit
- Majority Senior High school Education level
- Not more than 10% have basic ICT concept & skill

ISSUES

EXISTING

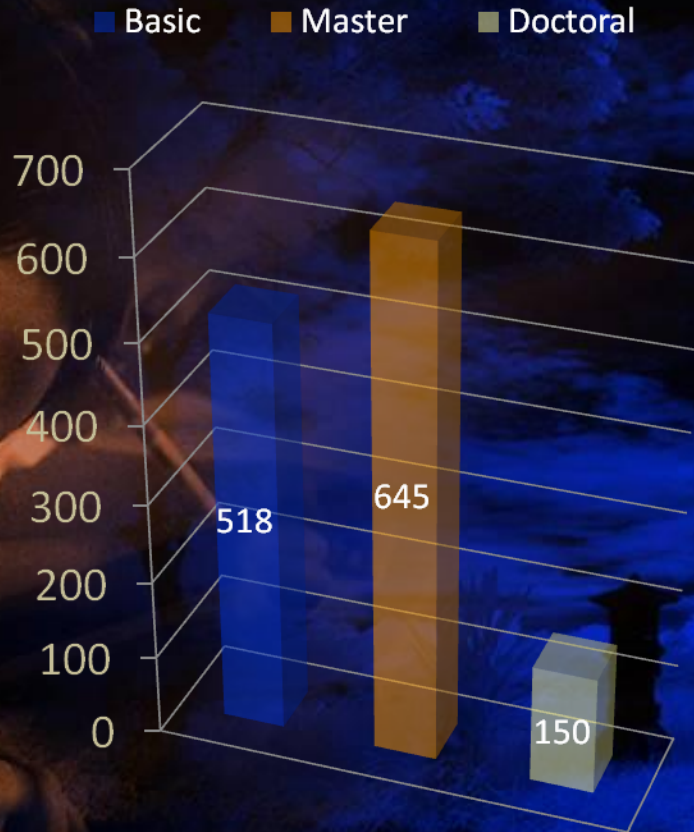
PROGRAMS





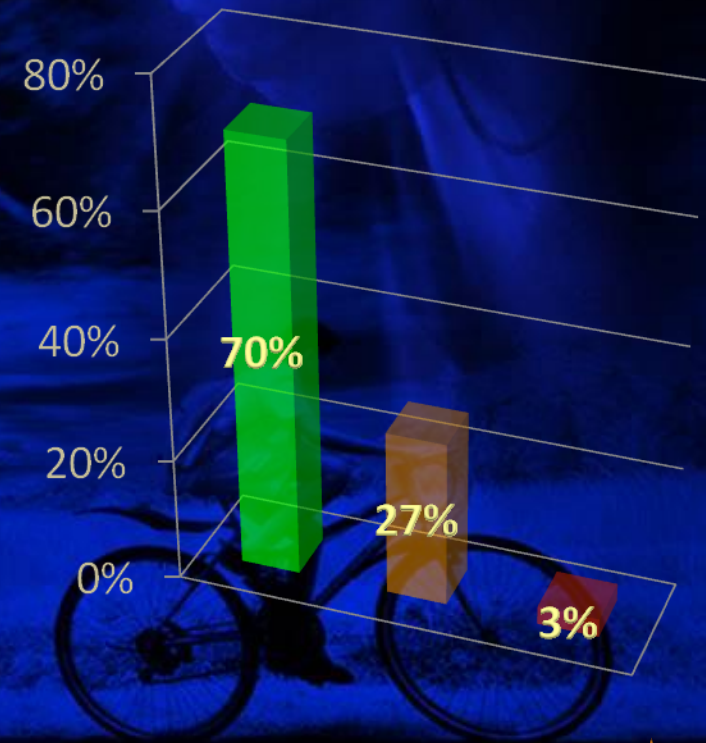
# TEACHERS PROFILE

## Academic Staff by Level of Education



## ICT Literacy

- Basic concep & skill
- Information Processing
- Problem Solving



ISSUES

EXISTING

PROGRAMS

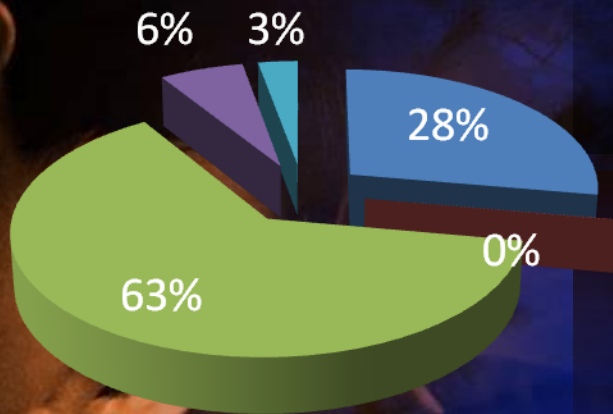




# STUDENTS PROFILE

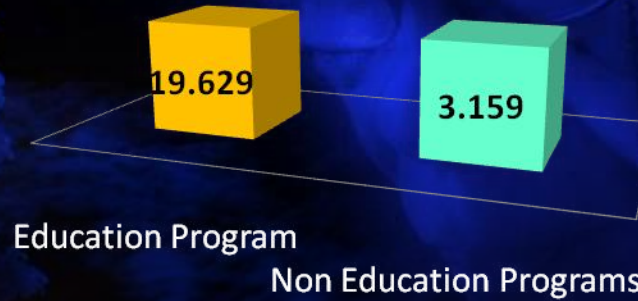
### NUMBER OF STUDENTS BY STRATA

D2 D3 S1 S2 S3

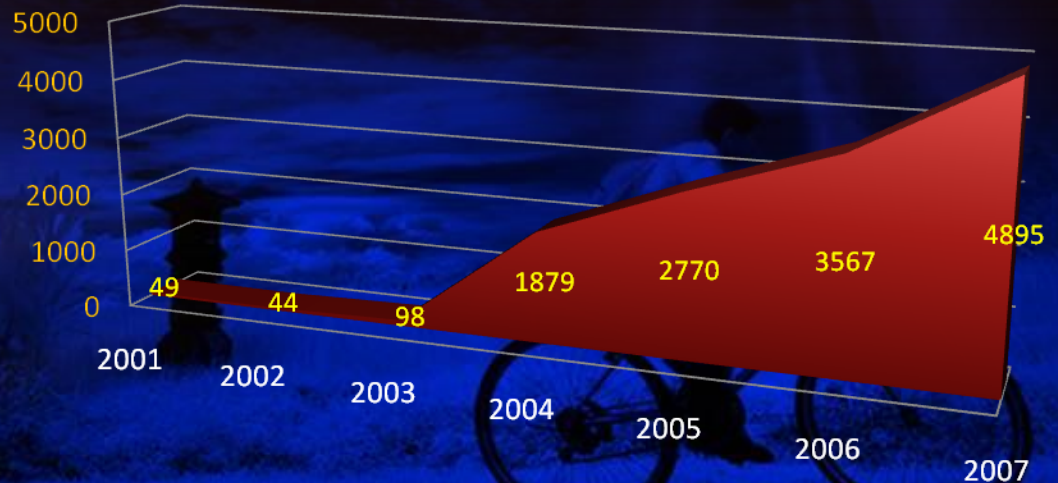


### NUMBER OF STUDENTS BY EDUCATION PROGRAM

Education Program Non Education Programs



### Number Student Use of ICT by Enrolled Year



ISSUES

EXISTING

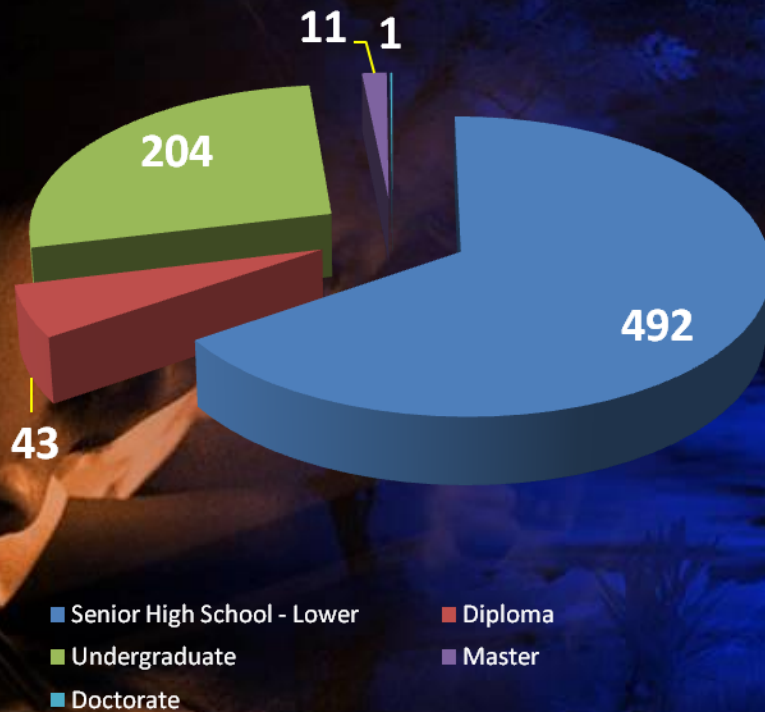
PROGRAMS



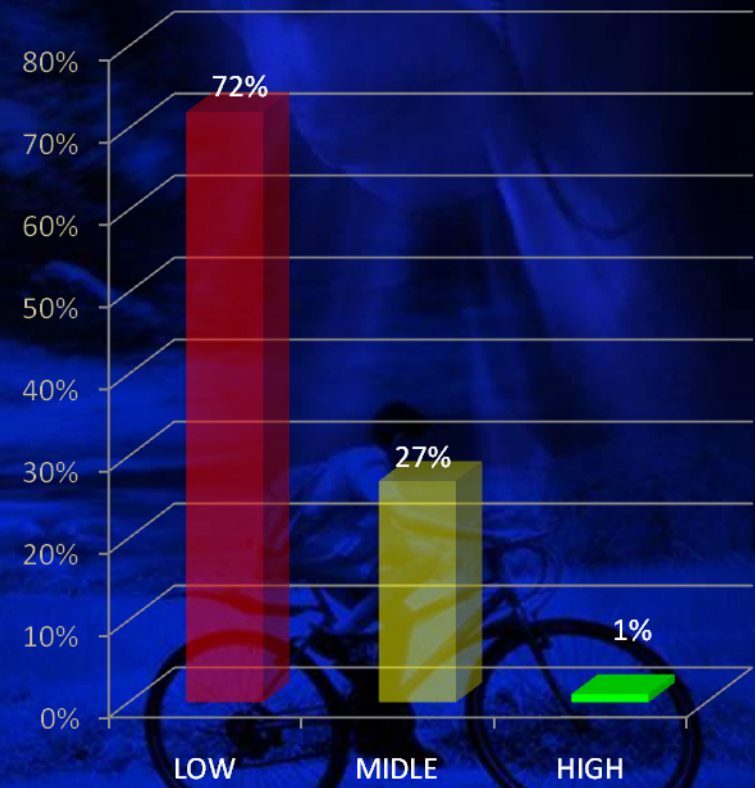


# EMPLOYEE'S PROFILE

## Employee's Education Level



## ICT Literacy



ISSUES

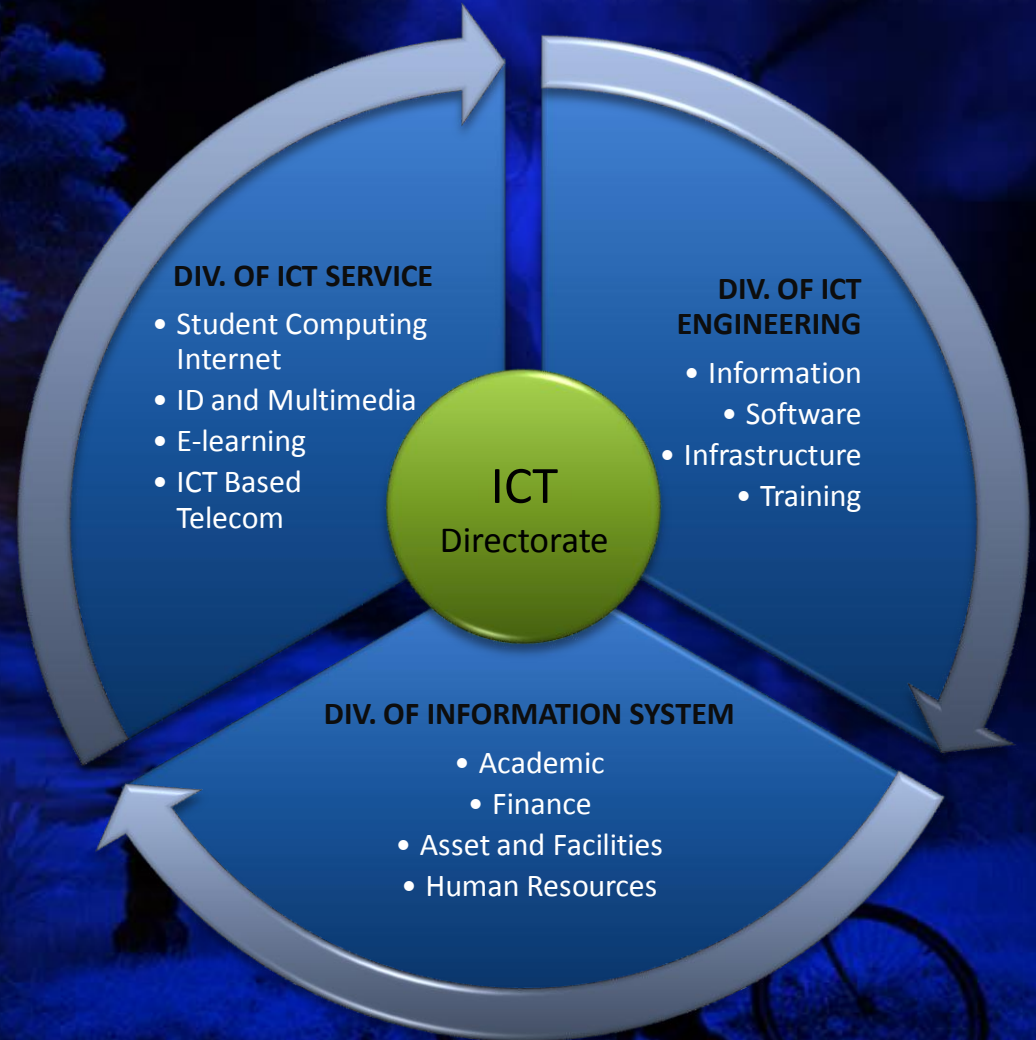
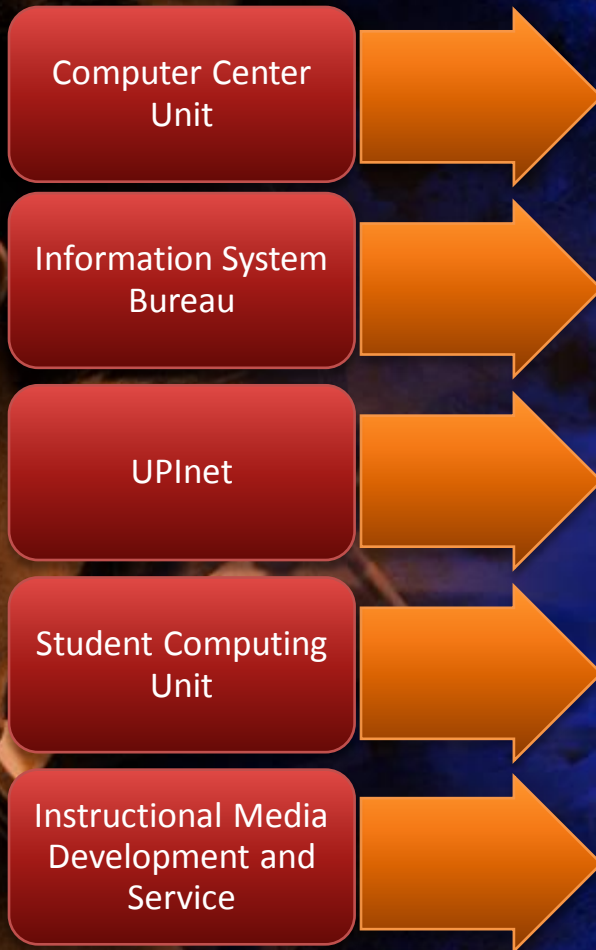
EXISTING

PROGRAMS





# ORGANIZATION



ISSUES

EXISTING

PROGRAMS



# INFRASTRUCTURE

- Technology
  - **Fiber Optic Cable** Backbone – **RG8** LAN Cable – **VDSL** Intranet Cable Backup – **wireless** link backup **2.4 GHz 802.11 b/g** – Outdoor - indoor **wifi** – **VPN IP MPLS** intercity WAN for regional campuses.
- Network
  - **LAN** in all buildings (10-100-1000 Mbps)
  - **WAN** connecting 1 central campus with 6 separate local campuses in 6 cities in Jawa Barat Province (3 Mbps – 1.5 Mbps backhaul and 256 Kbps in each regional campuses)
  - **Intranet** Central and Regional Campus
  - **Internet** international and IIX connection (8 Mbps symmetric).
- Server
  - DNS Server, Proxy Server, Router, Web Server, Mail Server, Database server, Information Managements Application Server, Multimedia Learning Resources Server, Communication Server, Multi Platform Conferencing Unit,
- Work Station – Computer
  - 400 Unit in *UPI*net, 50 Unit in Computer Science Department, each 25 Unit in 6 Regional Campuses, 25 Unit in Educational Science Faculty, and about 5 Unit in 169 institution (department, bureau, etc) in UPI.
- Software – Computer Application
  - Microsoft Campus Agreement containing (Microsoft Windows Server, Windows XP Windows Vista Business, Microsoft SQL, Microsoft Office, Microsoft Student, etc.
  - Programming software like Delphi, Microsoft Visual Studio, etc.
  - Web development and Graphic design like PHP, Corel Draw Family, Macromedia, Adobe, etc
  - Our own software (develop by software engineer in UPI)
- Other ICT Facilities
  - Multimedia room in every faculty facilitated with video conference devices from Polycom (Polycom VSX 8000, V 500 client, DLP Projector, and wifi)
  - ETS online TOEFL testing facilities in language center.
  - Training Facilities with 70 unit of computers
  - Mini Multimedia Production Studio with digital recording and editing devices.

ISSUES

EXISTING

PROGRAMS

# ICT PROGRAMS IN UPI

- ICT Infrastructure
  - LAN – Intranet – WAN – Internet.
- UPI Integrated Information Management System
  - Academic – Finance – Asset and Facilities – HR
- Student Computing Support System
  - Access Control System – Computing Services – Security system – Communication Services
- ICT Training
  - Distance Education Program – Regular Programs – In House Training Programs – Public Training Services
  - Microsoft Training – Cisco Training (on process)
- Web Application Development
  - UPI Official website – Academic Information System – Employee Information System – Online Syllabus – Online Course – Digital Library – Online Counseling – Forum – Student web blog – WAP services – Multimedia Learning Resources Center – Job Information / carrier (for alumni)
- Research and Development
  - Virtual Laboratory – e-learning System – Online Testing Administration – Video Teleconference – IP based telecommunication system
- Partnership Program
  - Microsoft – PT. Telkom Indonesia Tbk (Indonesia National Telecommunication Provider) – Acer Indonesia – HP-Compact Indonesia – CISCO – UNESCO – etc.

ISSUES

EXISTING

PROGRAMS