

Sistem Informasi

(Pengorganisasian Staff SI)

Based on : Management Information System, Second Edition, Effy Oz



Asep Wahyudin, S.Kom, M.T.

Ilmu Komputer

FPMIFA - Universitas Pendidikan Indonesia



Pengorganisasian Staff SI

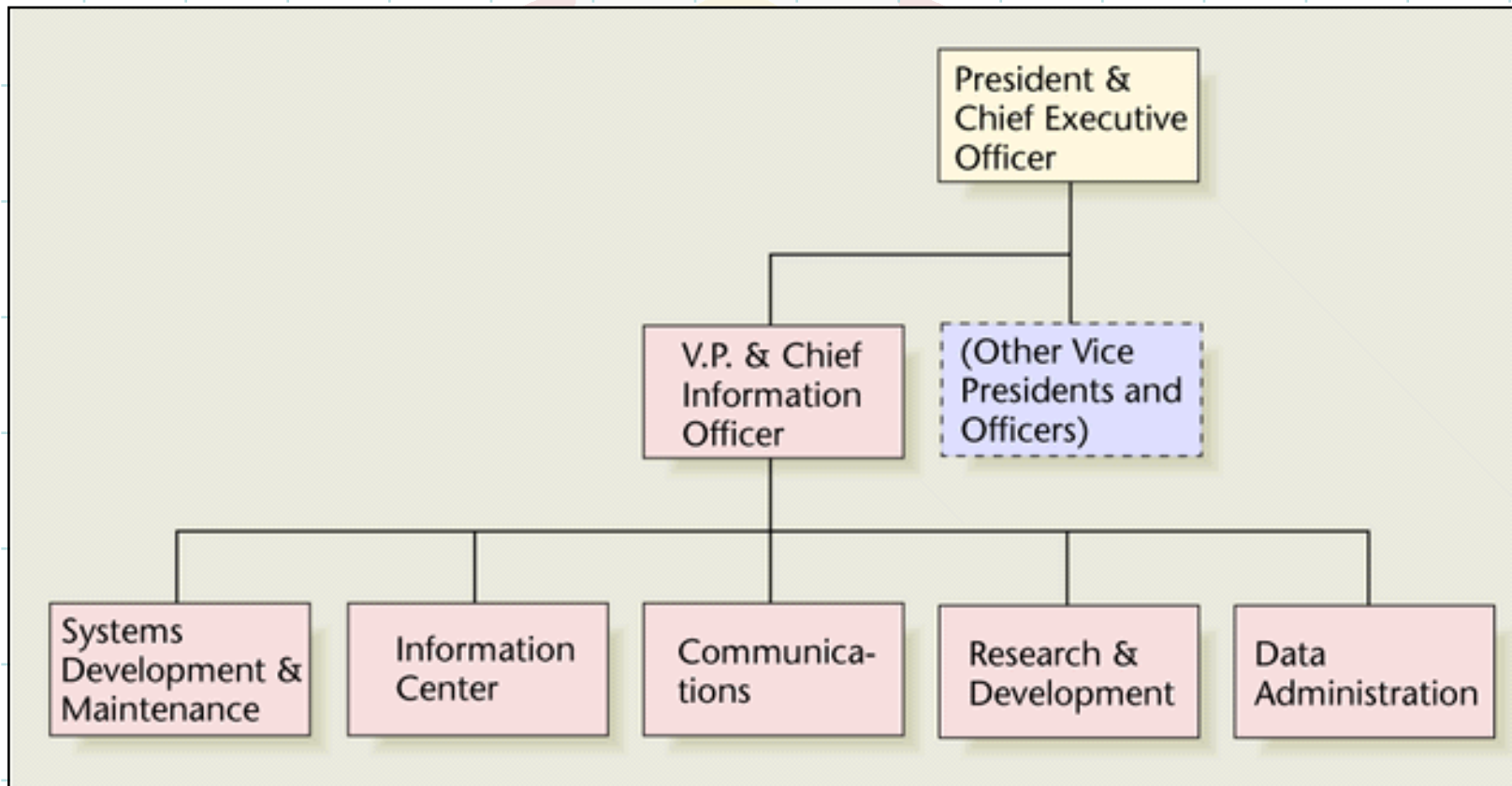
Central IS Organization

- Corporate IS team serves all units
- IS Director oversees departments within IS
 - System development and maintenance
 - Information center
 - Communications
 - Data administration
 - Research and development
- Involved in virtually every aspect of IT
- Steering committee oversees IS services



Pengorganisasian Staff SI

Central IS Organization



Contoh organisasi staff SI dalam bentuk *centrally managed ISs*

Pengorganisasian Staff SI

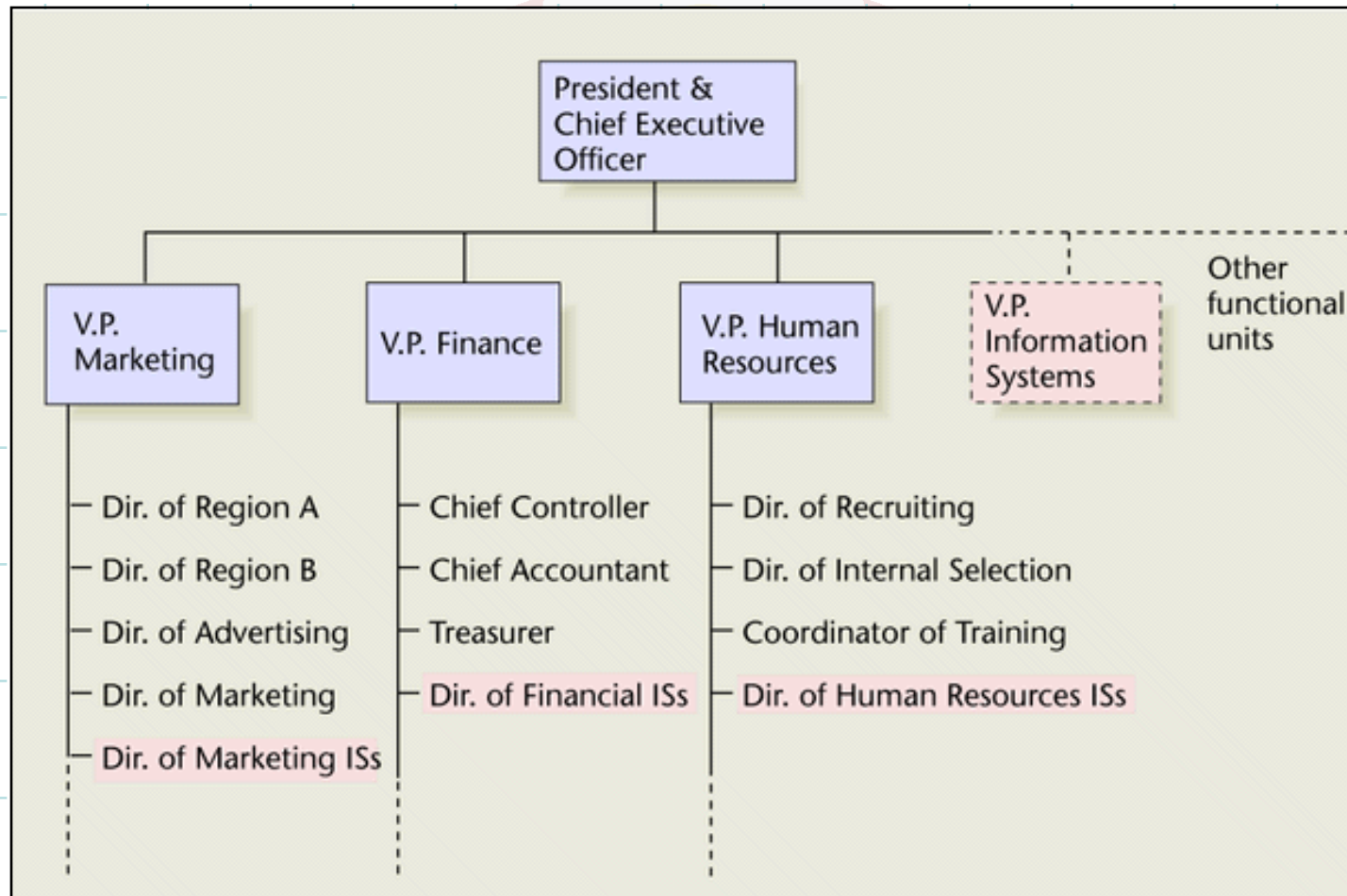
Functional IS Organization

- Each unit fulfills IS needs independently.
- Each business unit has one or several IS professionals who report to the unit manager.
- Funds come from unit budget.
- Small central unit can coordinate IS for departments that need help.



Pengorganisasian Staff SI

Functional IS Organization



Contoh dari penempatan lokasi personel dalam sebuah organisasi dalam *functionally managed ISs*

Pengorganisasian Staff SI

The Best of Both Approaches

- Many companies use elements of both central and functional IS management.
- Regardless of IS management, implementation depends on position of highest IS officer.
 - Reports to VP: IS provides technical solutions
 - Reports to CEO: IS more involved in strategic planning



Line Managers' Expectations of an IS Unit

- Broad understanding of business activities
- Prompt response to information needs
- Clear explanation of what technology can and can't do
- Candid explanations of what IS can and can't do
- Honest budgeting
- Single point of contact

Tantangan untuk Manajer SI dan Manajer Lini lainnya

IS Manager Expectations of Line Managers

- Projected list of basic IS needs
- Clear explanation of business processes that need support once an IS manager is asked to develop a new system
- What features the business manager wants in the new system once general automation process is set



