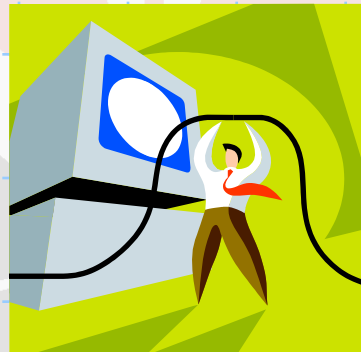


Sistem Informasi Pendidikan

:: Classroom Management ::



Asep Wahyudin, S.Kom, M.T.
Ilmu Komputer

FPMIFA - Universitas Pendidikan Indonesia



CLASSROOM MANAGEMENT

Providing Teachers with the ability to instruct, monitor and interact with their Students either individually, as a pre-defined group or to the overall class

As use of computers and the internet in schools grows



need networked classrooms for managing the learning process



Objectived

- Teachers and Trainers can improve the efficiency of classroom instruction by centrally instructing s on their computer,
- keep Students on task by monitoring application and web usage,
- improve support through online help and chat requests,
- and save time by quickly polling the class and showing instant results.
- Teachers can also record all screen, keyboard and mouse activity on a Student workstation to review later.

Virtual Whiteboard

Internet Co-Browse

This allows a Teacher to open selected websites and synchronise this with the browser on each Student PC. As a Teacher navigates across a website the Student PCs will follow, even scrolling down on a specific page in sequence with the Tutor.

Once the Tutor has opened the desired pages these can be left available to the Students as information Tabs, and they can be left to review the content without access to any additional websites.

Group or 1:1 Chat

Open a discussion session that all or selected Students can join, enter their comments and share with the rest of the class: Ideal for conducting class or limited group forums. During this Chat session, an interactive Whiteboard is available to improve understanding. Chat sessions also feature full bi-directional audio support.

Main Feature

Audio

Broadcast Audio to the class or transmit the Tutor's voice during a presentation. Audio transmitted during a live presentation is also saved, when selected, in a replay file. The Replay file allows a Student to review a screen presentation at their leisure with the accompanying Teachers explanation.



Class

- Power On or Off all classroom computers from the Teacher PC.
- Perform a Remote "Log off" on all PCs.
- Send a Remote "Log in" to all Student PCs at the beginning of class.
- Blank Student Screens to gain attention.
- Lock the Students Mouse and Keyboard when instructing.
- Create custom classroom layouts so the Teacher PC represents the layout of the physical classroom.
- Create individual Teacher profiles to deliver the specific features needed by each teacher.

Printer

Management Feature

Allowing total control over printer usage within the classroom. Students can be prevented from printing, can be assigned page limits per lesson or require Teacher authorisation. Thresholds can be applied for a lesson defining maximum size of print jobs, auto deletion rules and more and keeping Computer printing costs under control

Device

Protection from external sources for the duration of a class. This includes preventing data being copied to (or from) USB devices and CD/DVD drives.

Interactive Lesson Planner

Pre-Plan the scope of the lesson and will continue to advise the teacher on time remaining, when the next action is due and more. Lesson plans can be created in advance and utilised time and again. Within the main Teacher console a progress bar will advise the teacher of the current activity, activities due for the remainder of the lesson and the overall time remaining.

Handout and Collect Files

system can distribute files and data from the Teacher PC to multiple Student workstations simultaneously with a minimum of keystrokes and effort.

Detail feature

- Transfer files to and from a selected PC in a single action.
- Distribute files to multiple PCs in a single action.
- Hand out files to all Students and automatically collect them at the end of the lesson with each Students details appended to their file.

Lesson Timer

Countdown the class session with the new lesson timer combined with an all new custom alerts feature, e.g. "10 minutes until end of lesson, save work now". Countdown timer changes colour from **Green** to **Amber** to **Red** as the end of the lesson approaches.

Auto Re-Connect

System provides a fail safe during an active lesson. If a Students computer disconnects for some reason or is switched off, on restart the system will automatically rejoining the active class if it is still running and all previous settings will be re-applied. This prevents Students deciding they wish to leave a lesson and do something else on their computer.

