

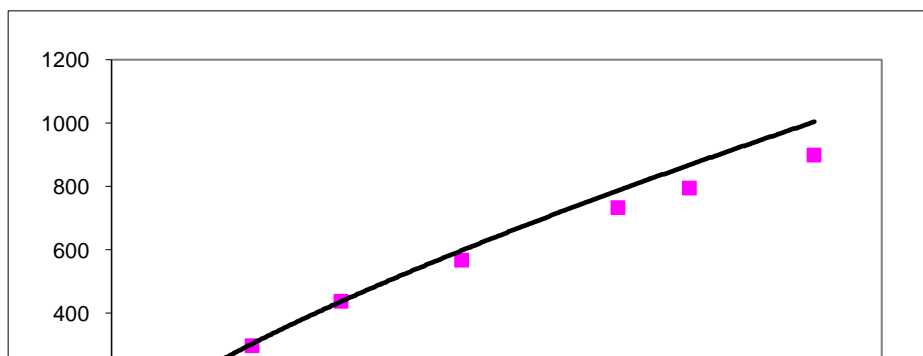
Volume
(juta m^3)

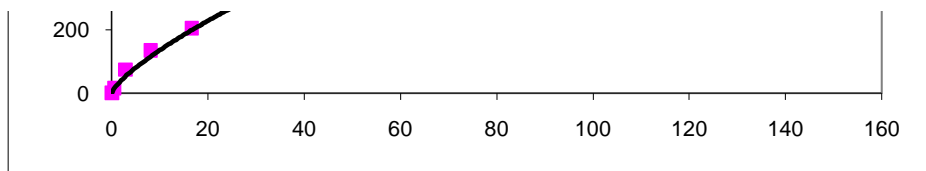
hasil Metod
maka eleva
dengan lua:

28,58

PERSAMAAN KARAKTERISTIK WADUK

$$A = 24,695 V^{0.7433}$$





]

Elevasi (m) Vol. kmltf (juta m³) Luas Genang (ha) Elevasi (m)

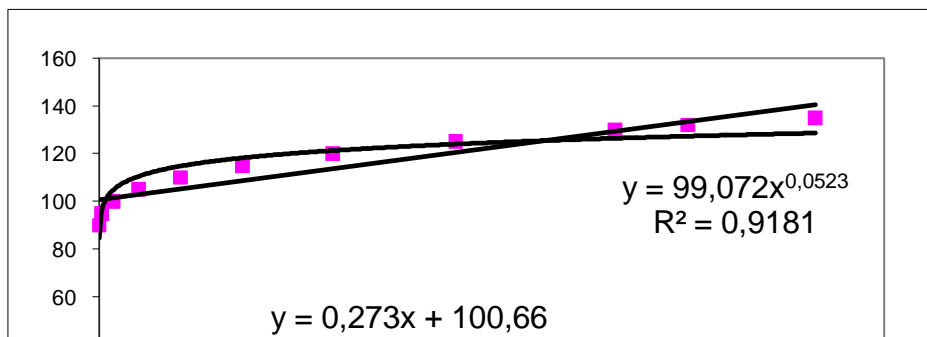
Dincer's Method

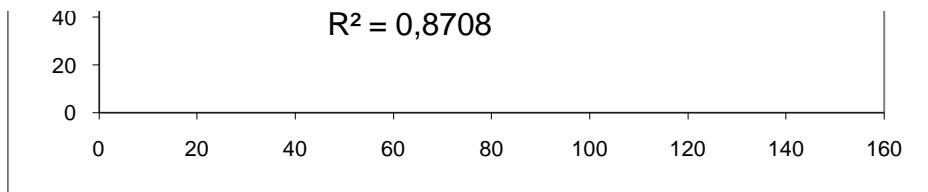
storage = 115,00 juta m³
 elevasi = 131,2 m
 genangan = 760 ha

la Rippl kapasitas yang diperlukan = 120 juta m³
 isi yang diperlukan adalah = 132 m
 s genangan = 795 ha
 7,95 juta m²

Elevasi (m)	Luas Genangan (ha)	Volume (10 ⁶ m ³)	Volume Kumulatif (10 ⁶ m ³)
90	1,9555	0,0489	0,0489
95	16,8659	0,4705	0,5194
100	75,3097	2,3044	2,8238
105	135,2733	5,2646	8,0884
110	205,9024	8,5294	16,6178
115	297,1927	12,5774	29,1952
120	438,1614	18,3839	47,5790
125	566,3980	25,1140	72,6930
130	732,6806	32,4770	105,1700
132	795,0000	14,8300	120,0000
135	898,3297	40,7753	145,9452

42 3
 45





$$y = 0,273 X + 100,66$$