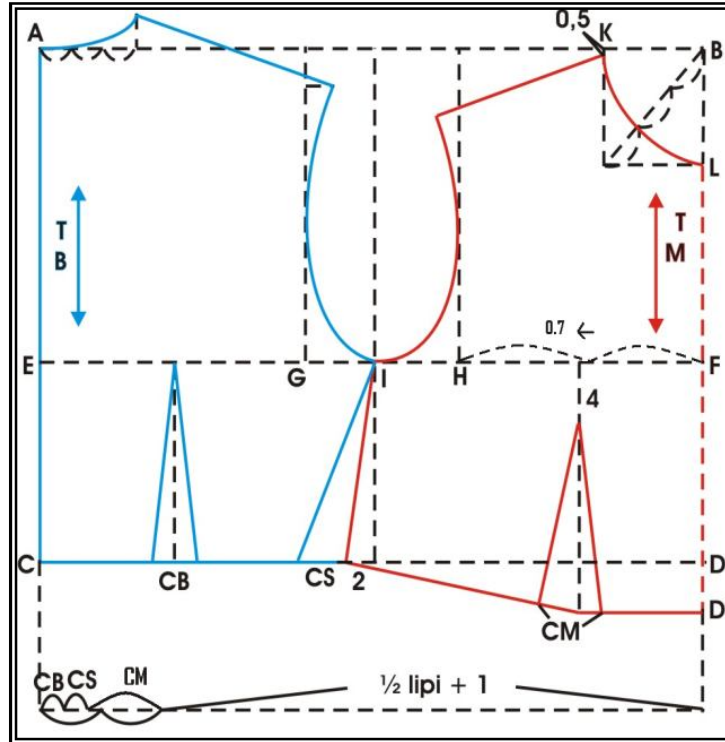


POLA DASAR BADAN WANITA DEWASA
SKALA 1 : 4



KETERANGAN GAMBAR

A-B = $\frac{1}{2}$ Liba + 5 cm = CD

A-C = B-D = Panjang Punggung

A-E = B-F = $\frac{1}{6}$ Liba + 7 cm

E-G = $\frac{1}{6}$ Liba + 4,5 cm

F-H = $\frac{1}{6}$ Liba + 3

A-I = $\frac{1}{20}$ Liba + 2,7 cm = B-K

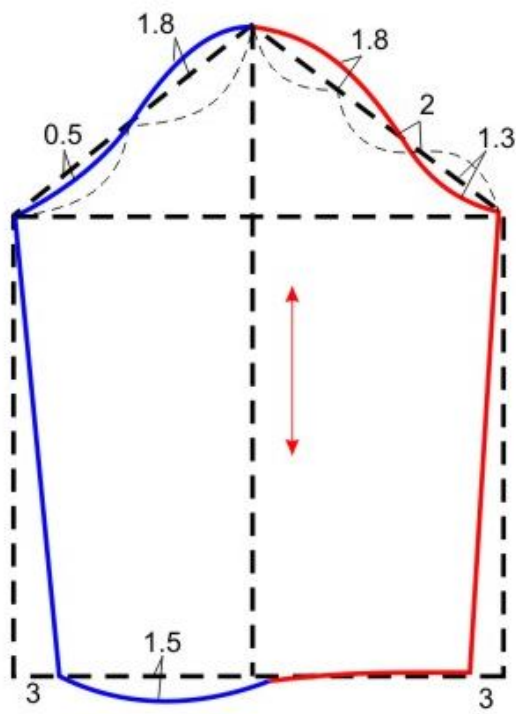
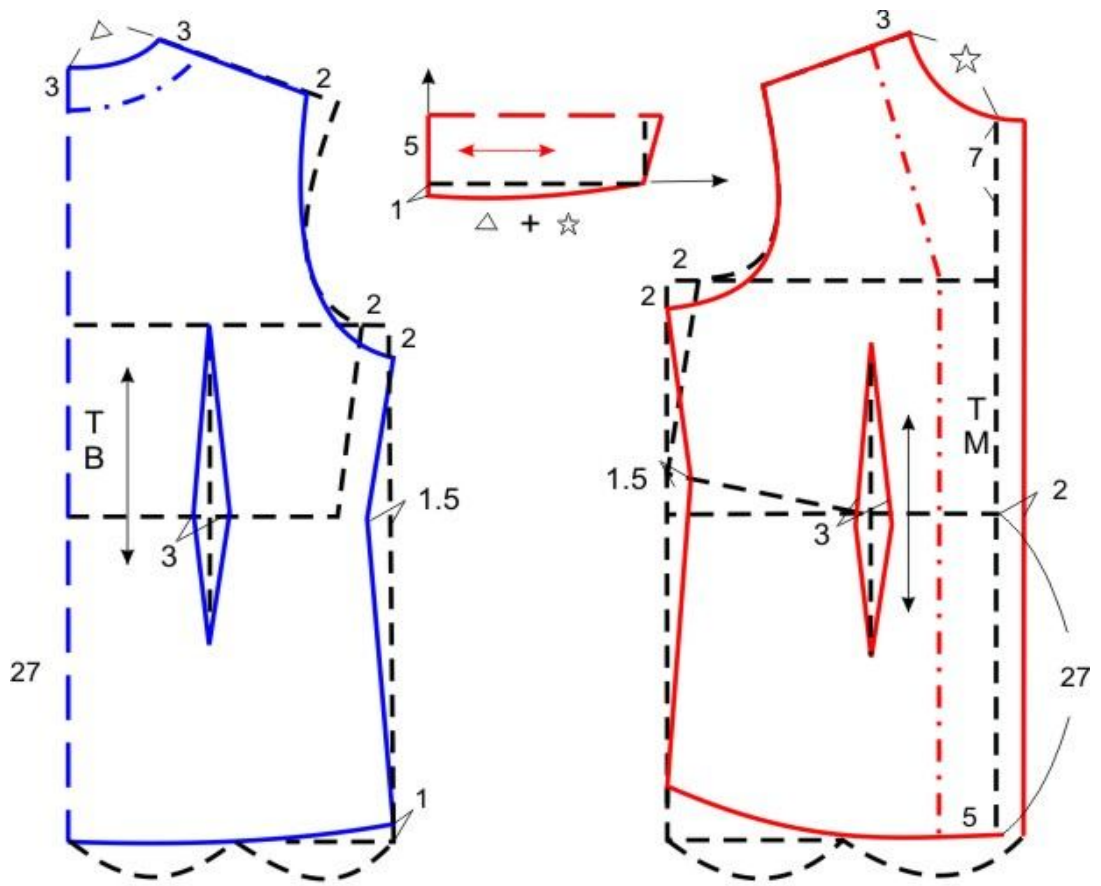
B-L = B-K + 1

I naik ke atas $\frac{1}{3}$ A-I

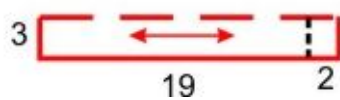
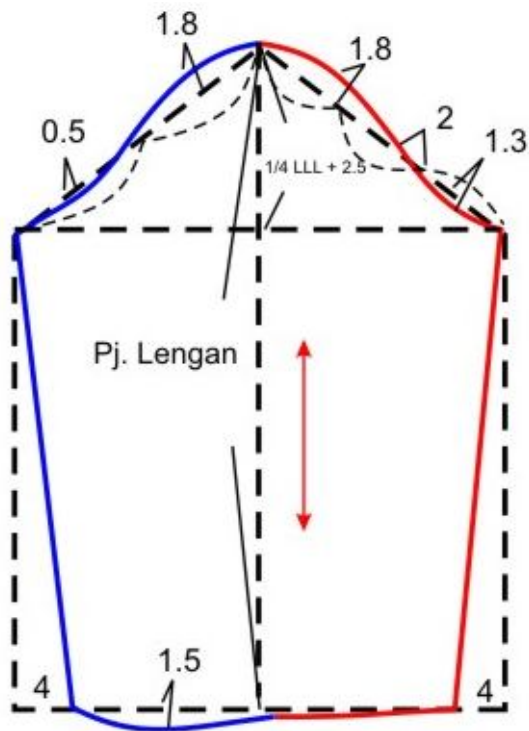
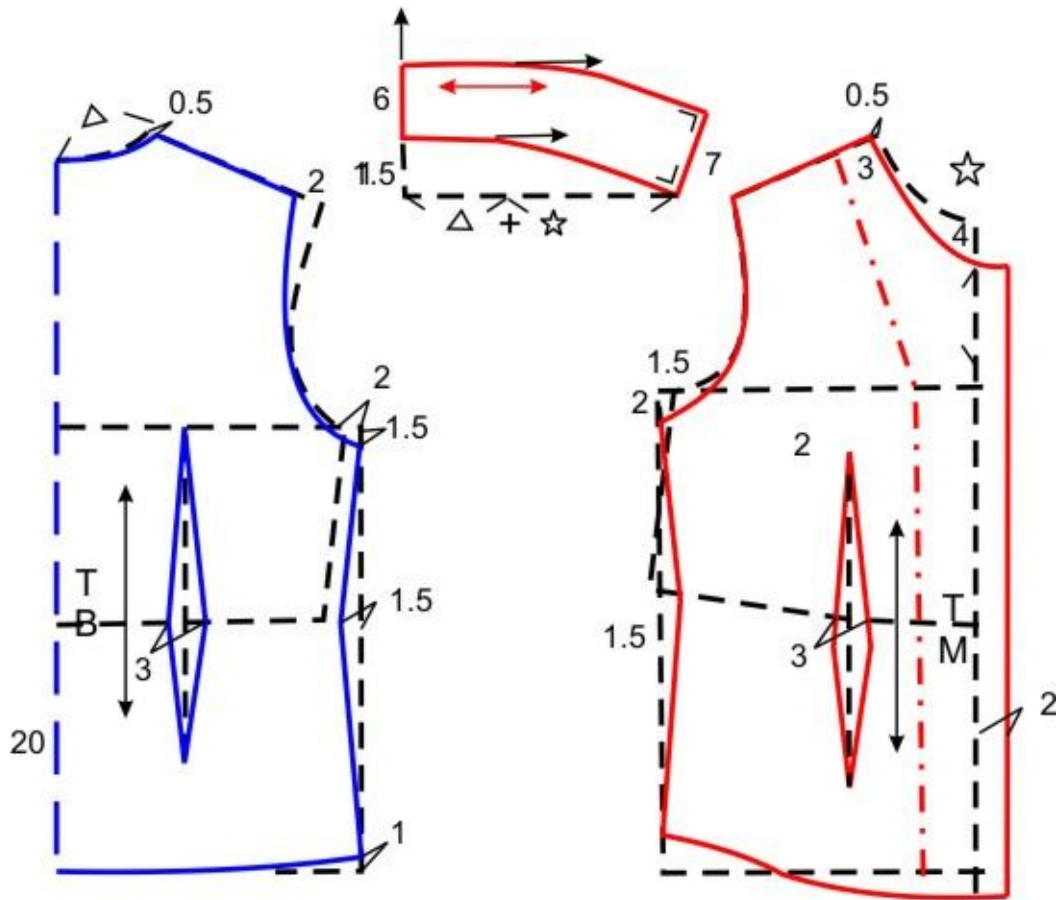
G-J = dibagi 2 bagian kemudian dari G membuat garis 45° sepanjang $\frac{1}{2}$ G-J + 0,5 cm (Lubang lengan bagian belakang)

H-J = $\frac{1}{2}$ G-J (Lubang lengan bagian muka)

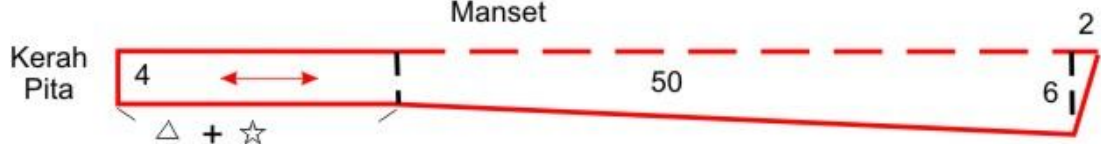
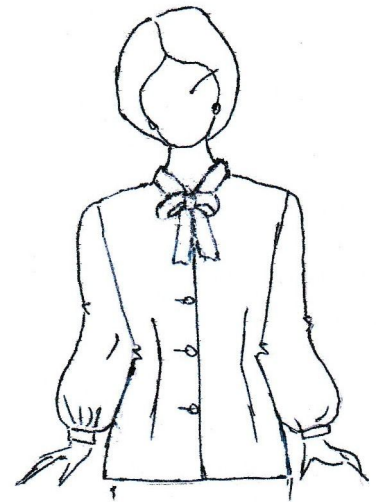
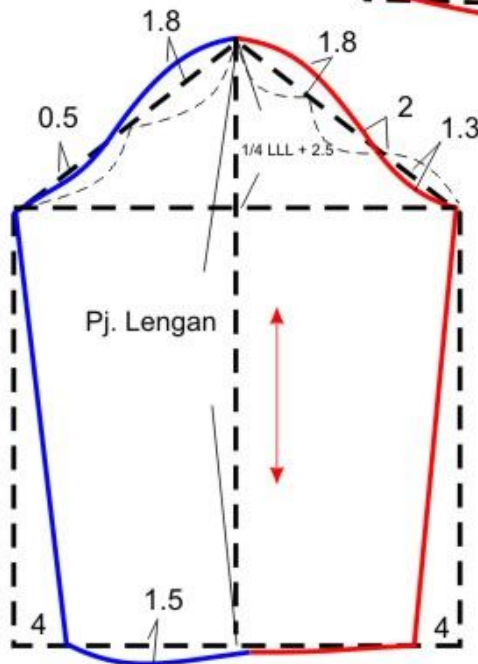
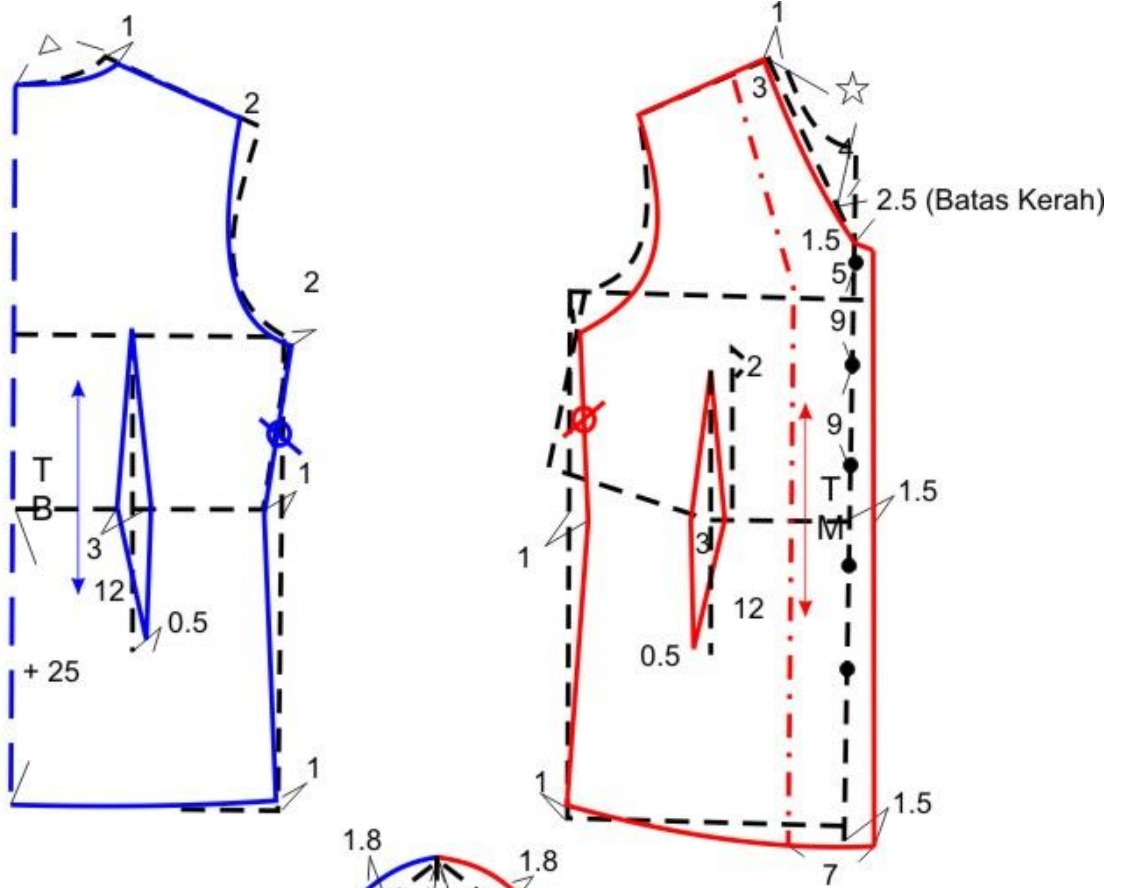
POLA BLUS DENGAN KERAH SHILLER



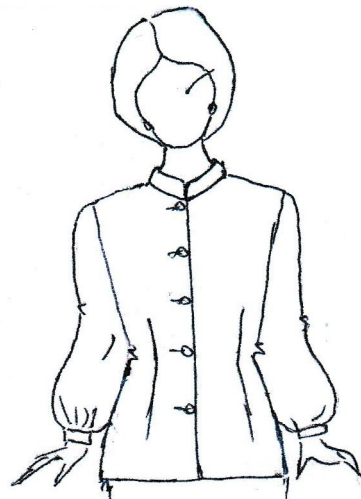
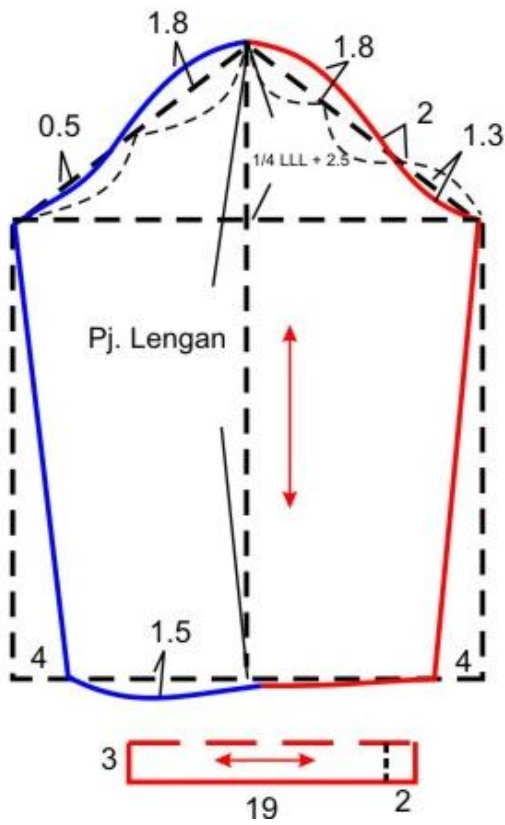
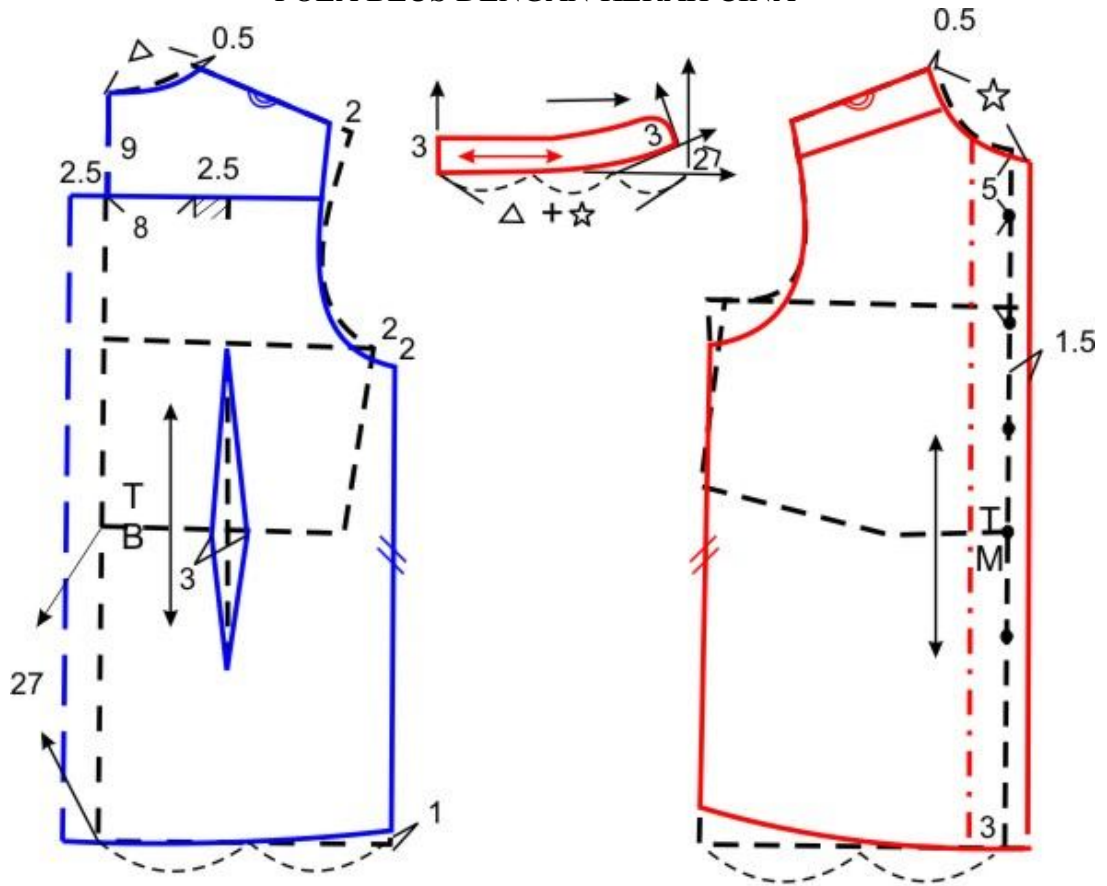
POLA BLUS DENGAN KERAH SETENGAH TEGAK



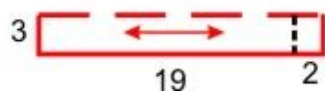
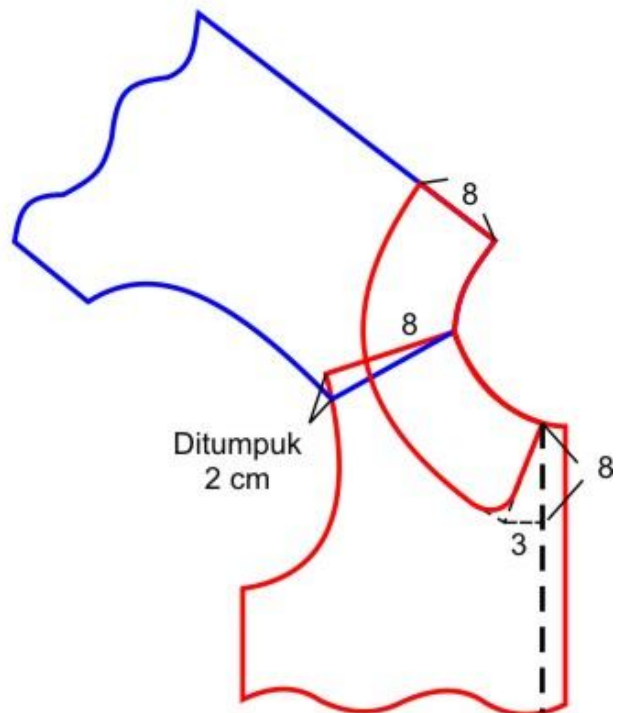
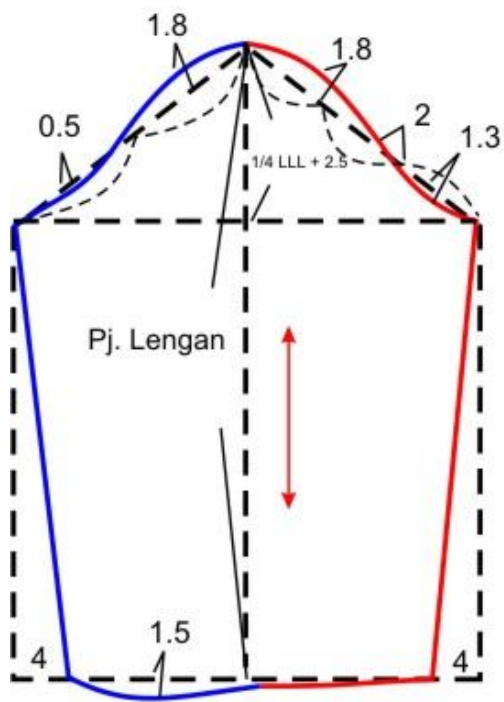
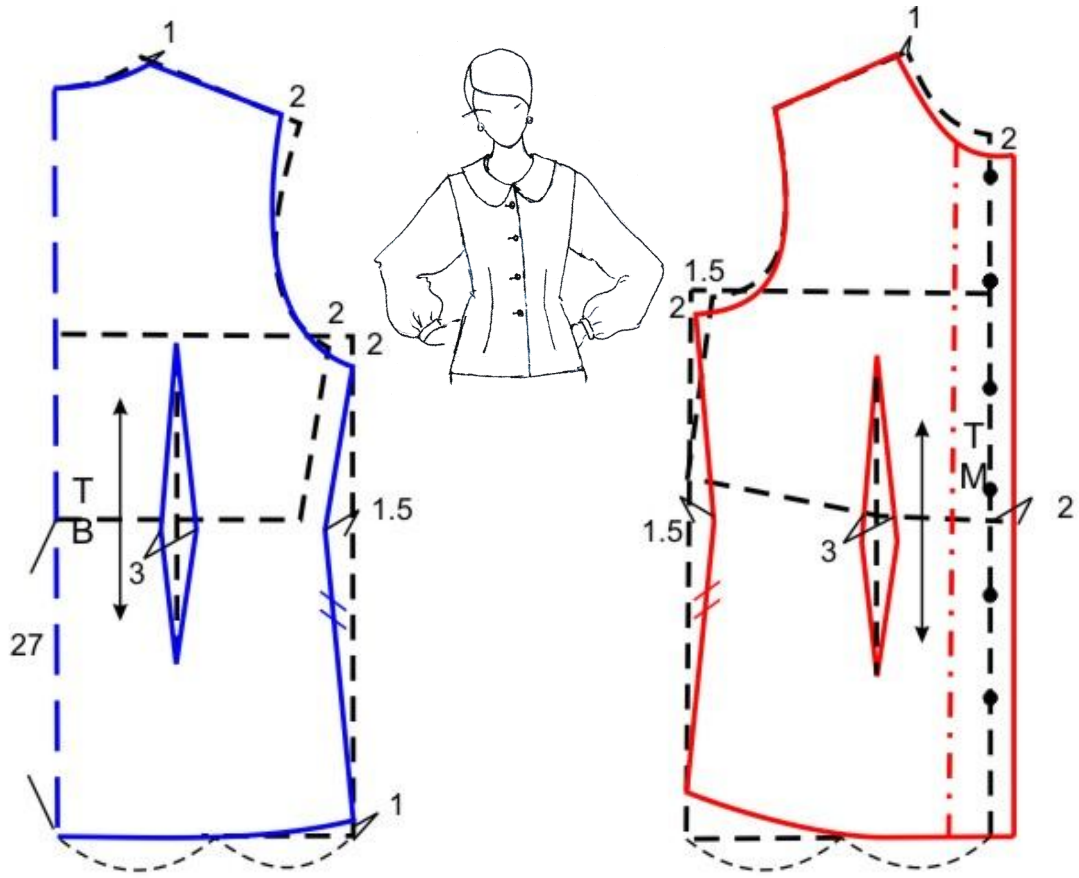
POLA BLUS DENGAN KERAH BERPITA



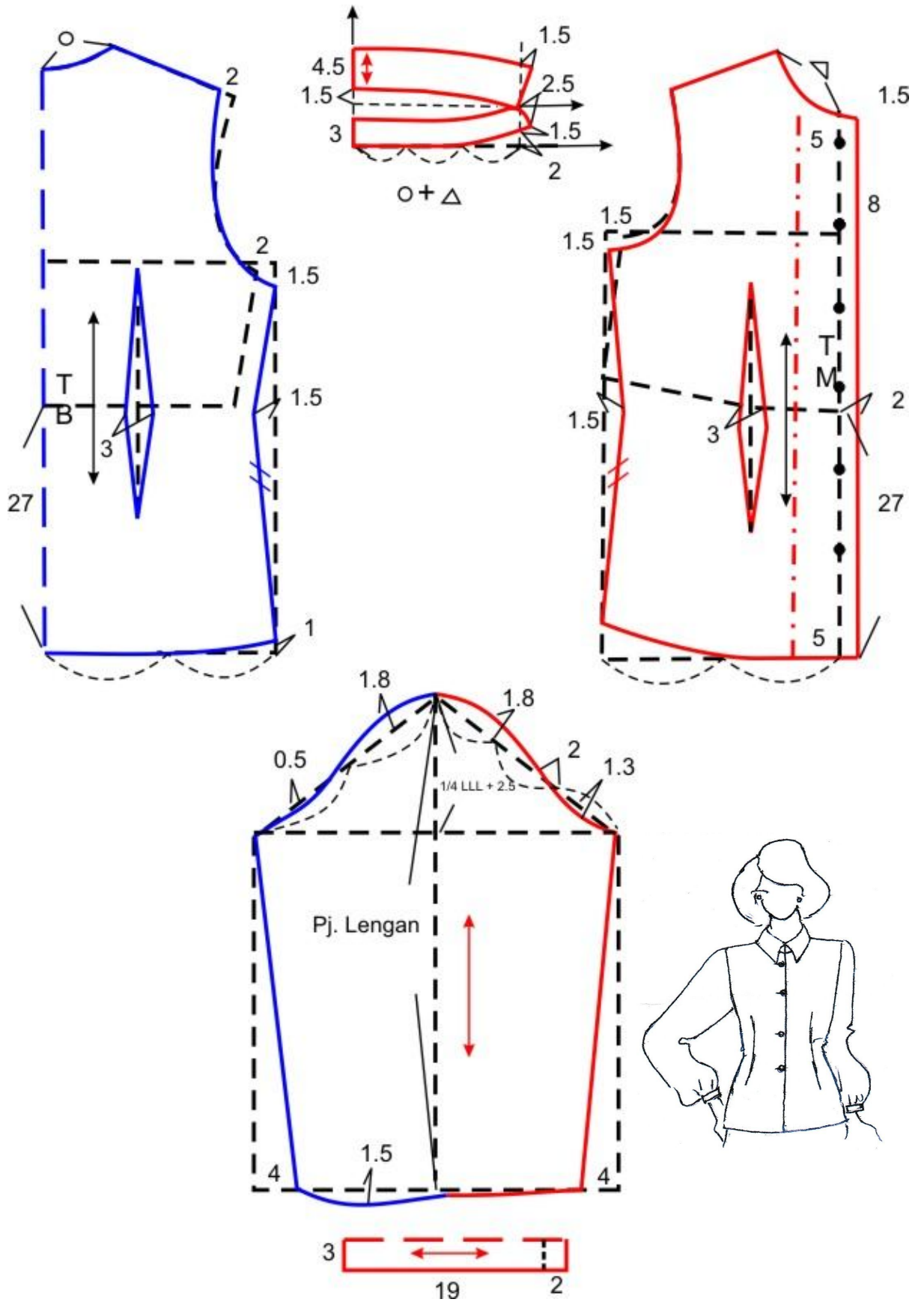
POLA BLUS DENGAN KERAH CINA



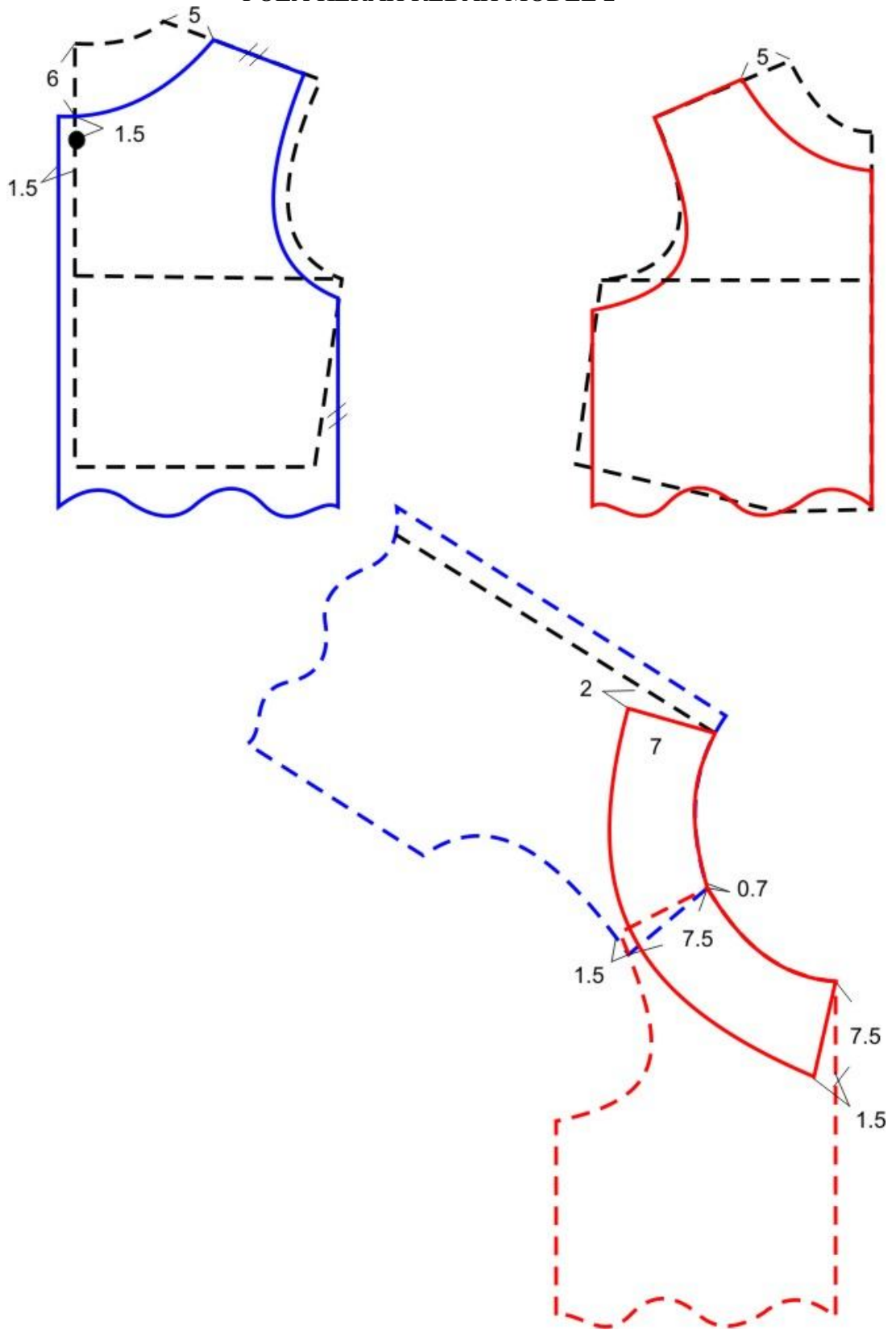
POLA BLUS DENGAN KERAH REBAH



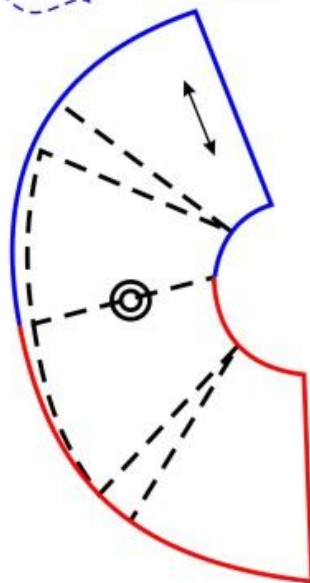
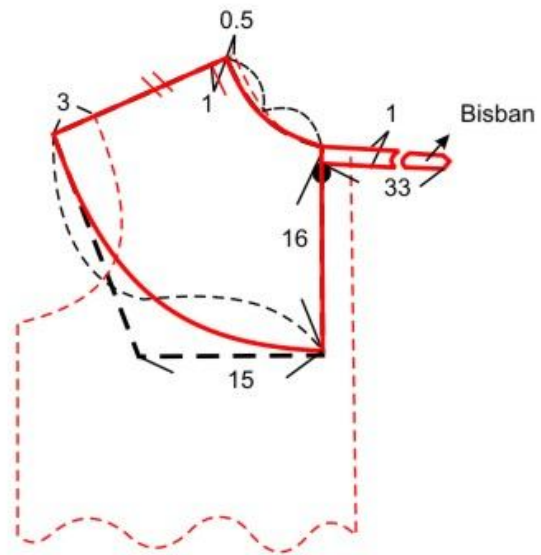
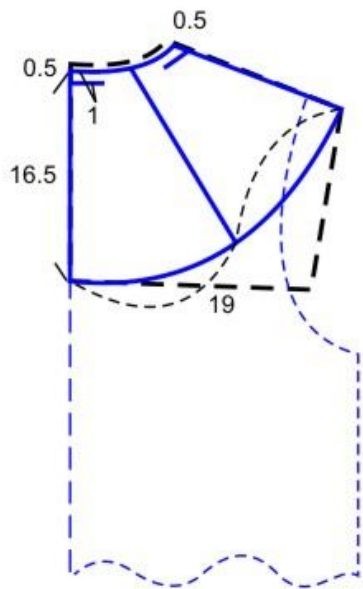
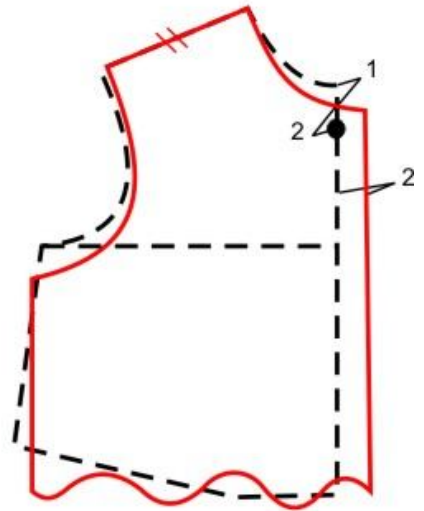
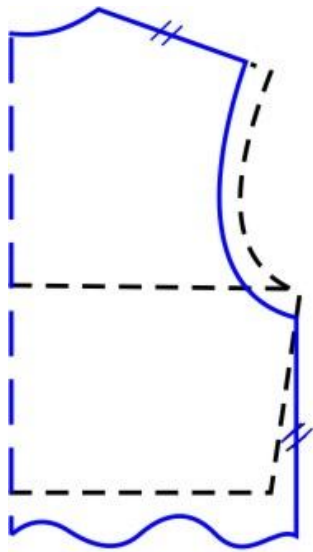
POLA BLUS DENGAN KERAH KEMEJA



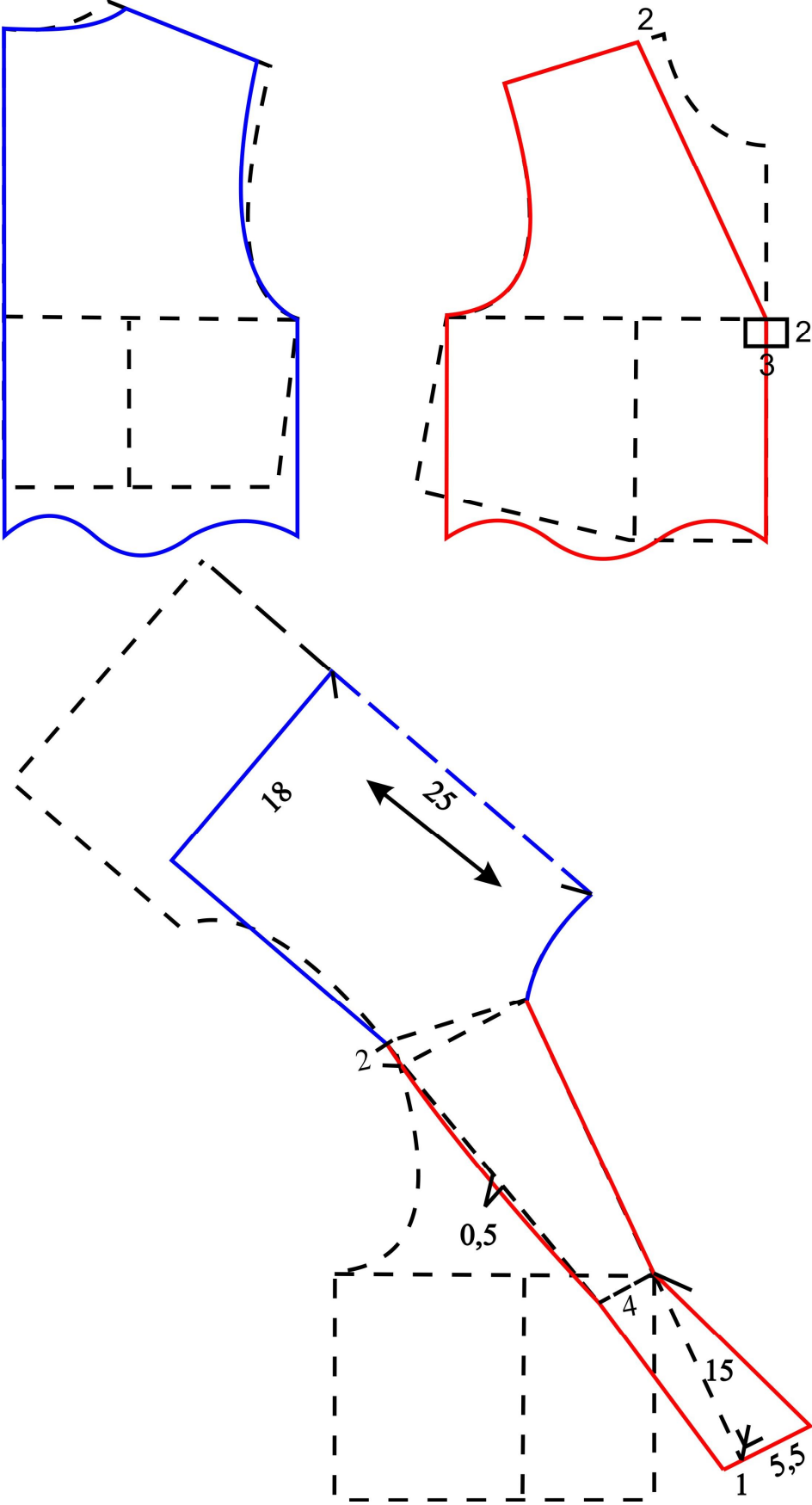
POLA KERAH REBAH MODEL 2



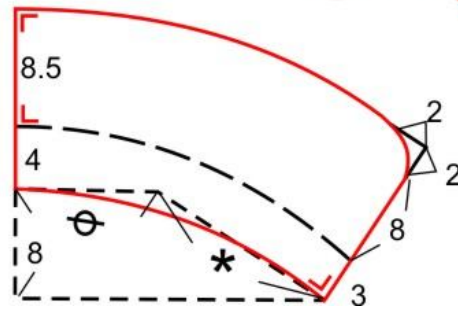
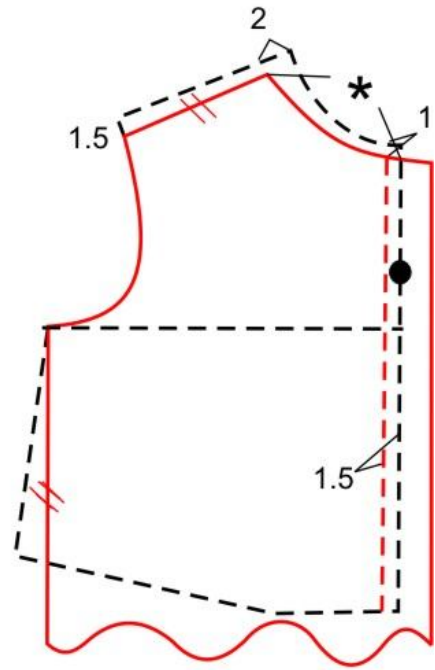
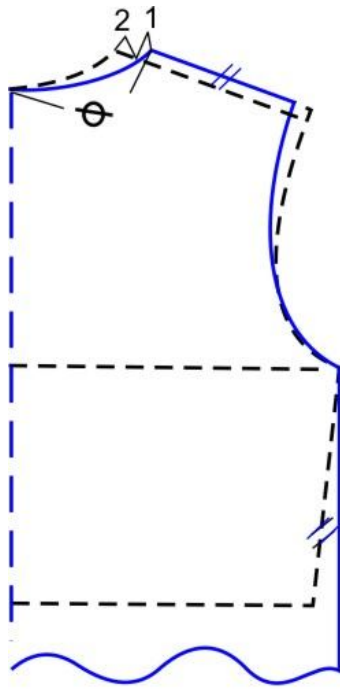
POLA KERAH REBAH MODEL 3



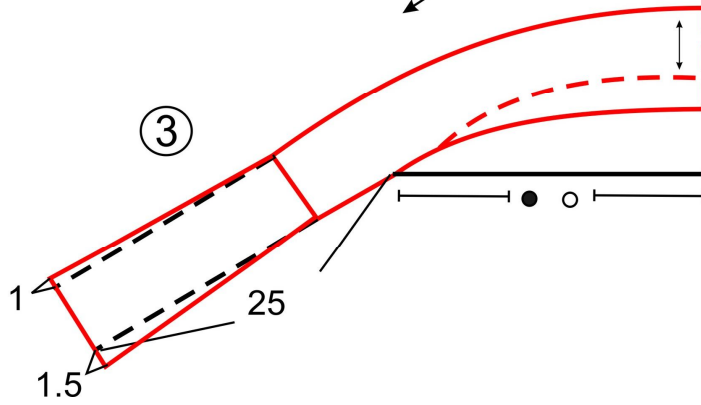
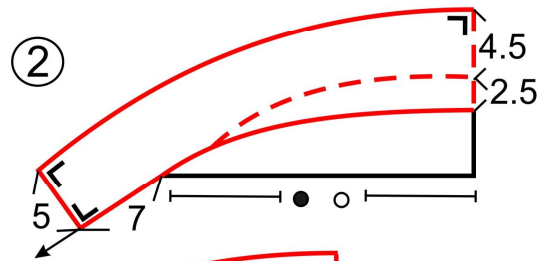
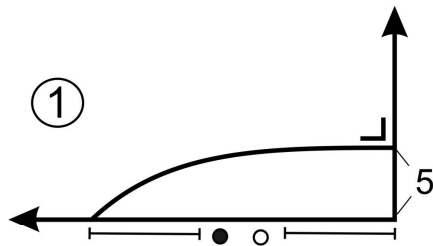
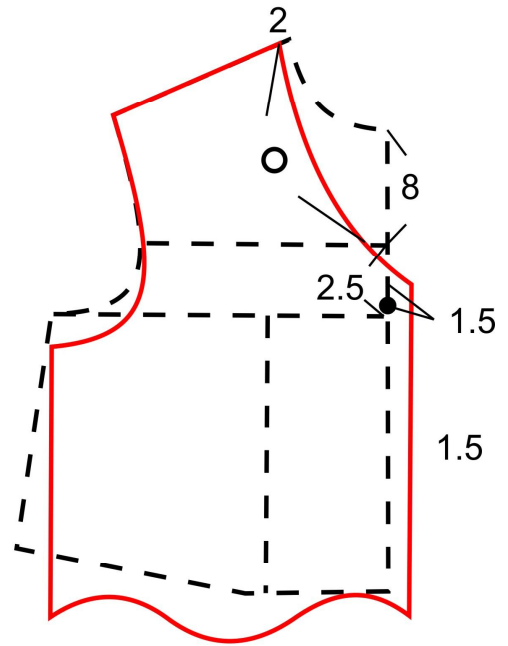
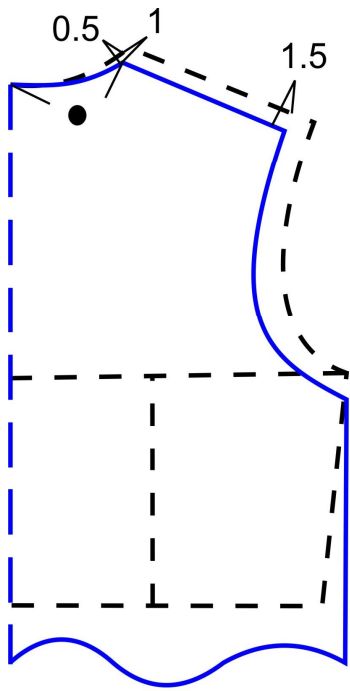
POLA KERAH KELASI MODEL 1



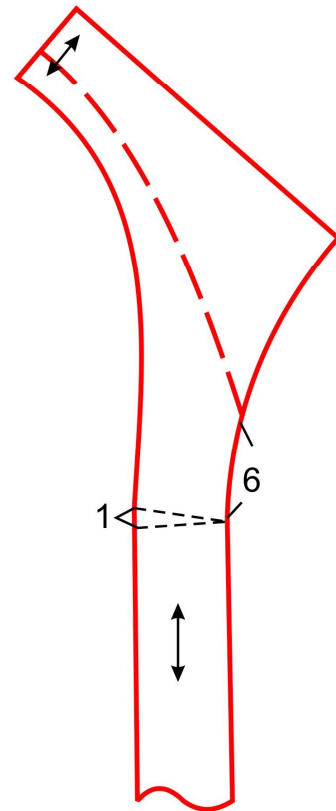
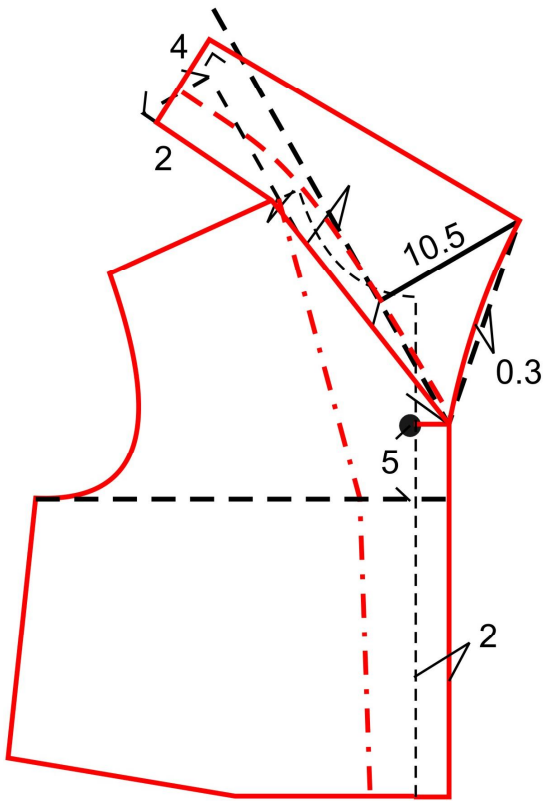
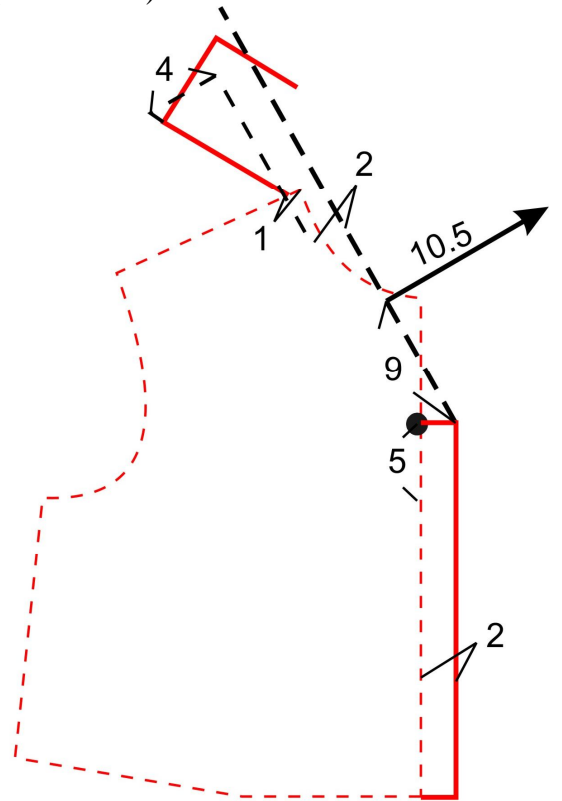
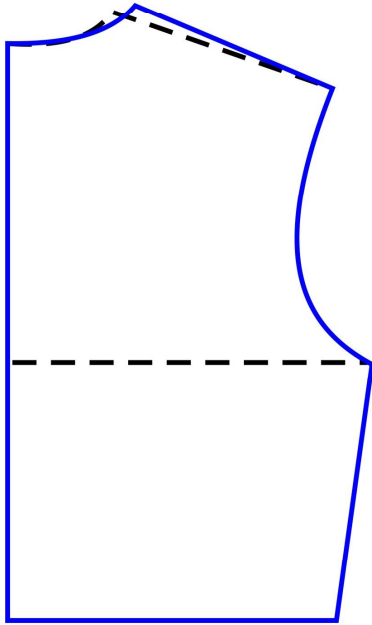
POLA KERAH GARBO



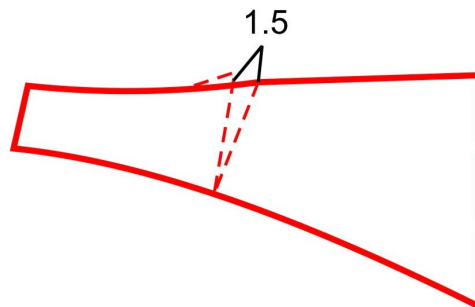
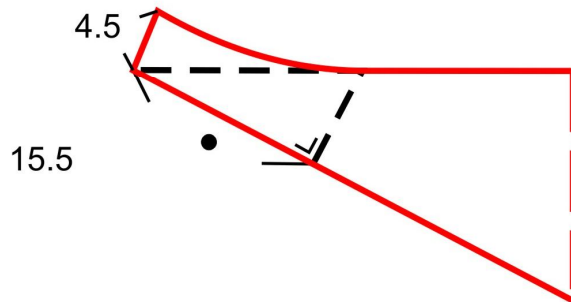
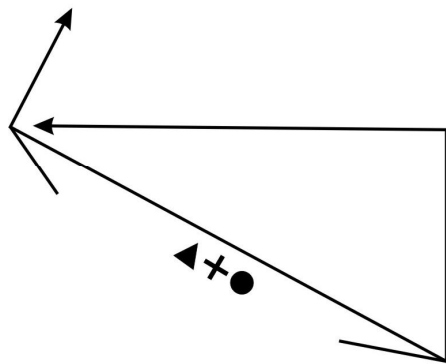
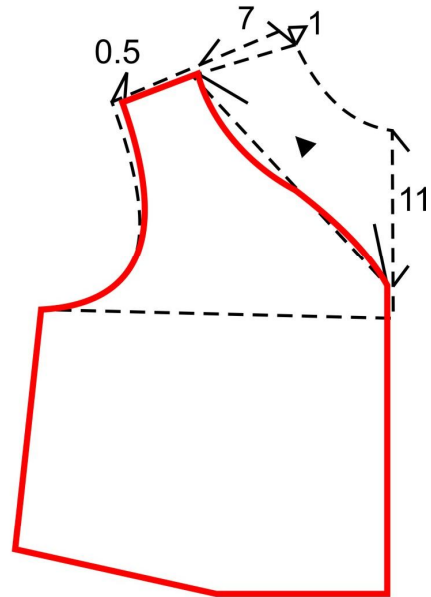
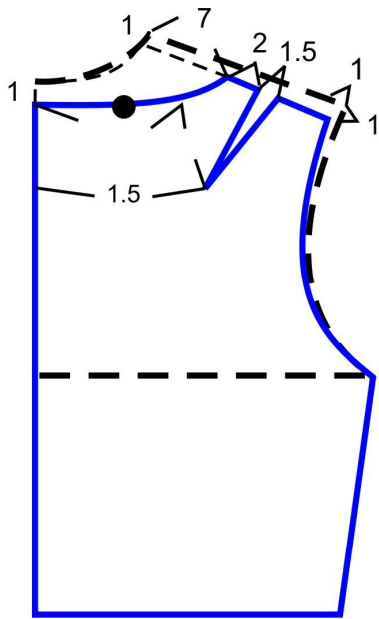
POLA KERAH DASI



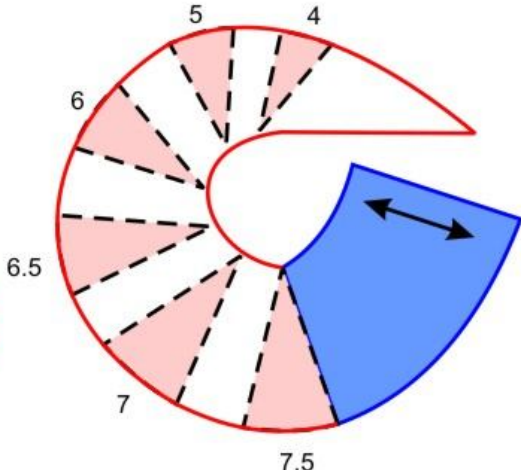
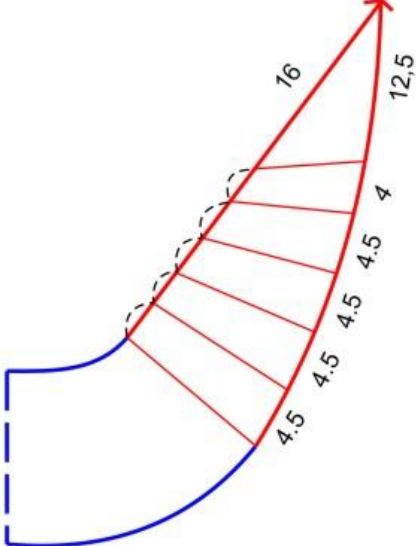
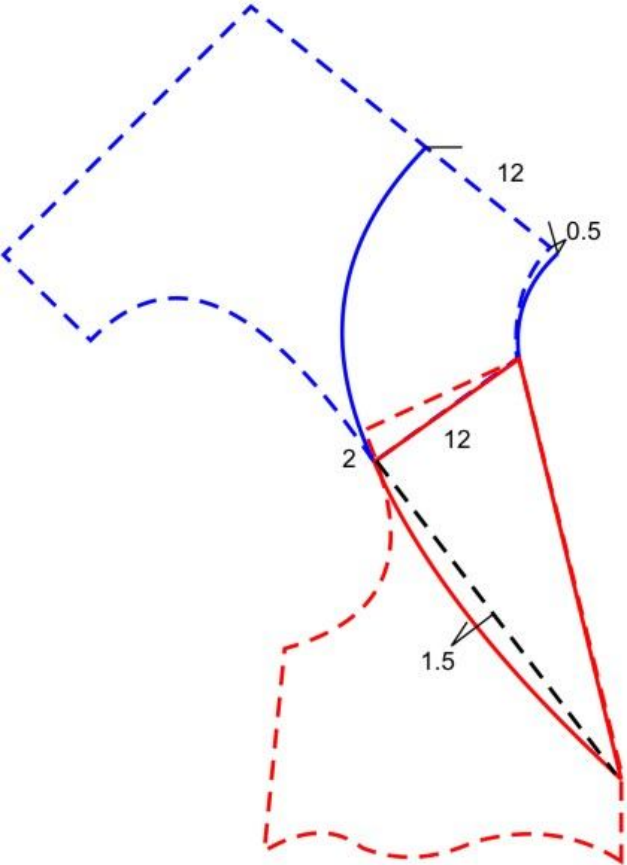
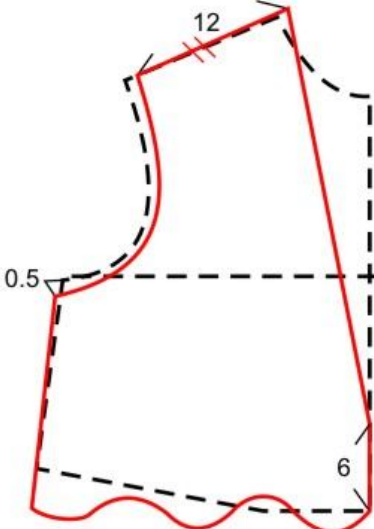
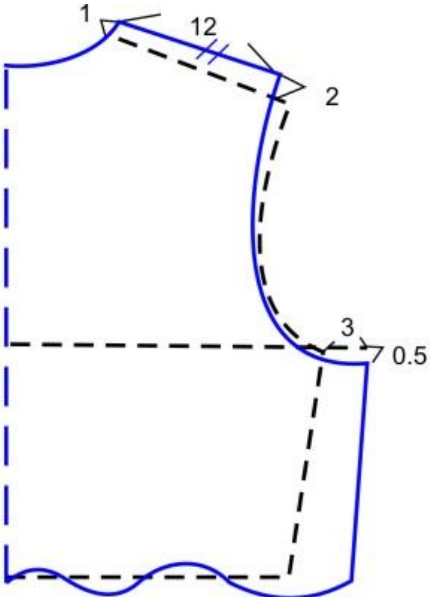
POLA KERAH REVER (KELEPAK)



POLA KERAH DRAPPERY



POLA KERAH FRILLED



POLAKERAH TAILOR

