

**MEMAHAMI
ALAT REPRODUKSI
SEBAGAI SUNNATULLAH**

♀
XX

♂
XY



X

X

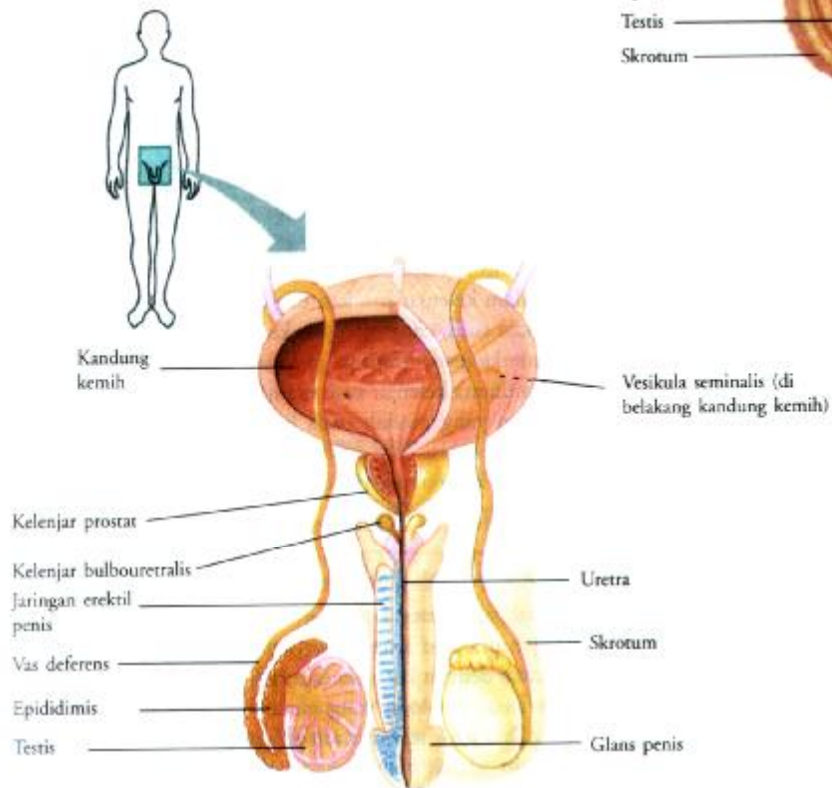
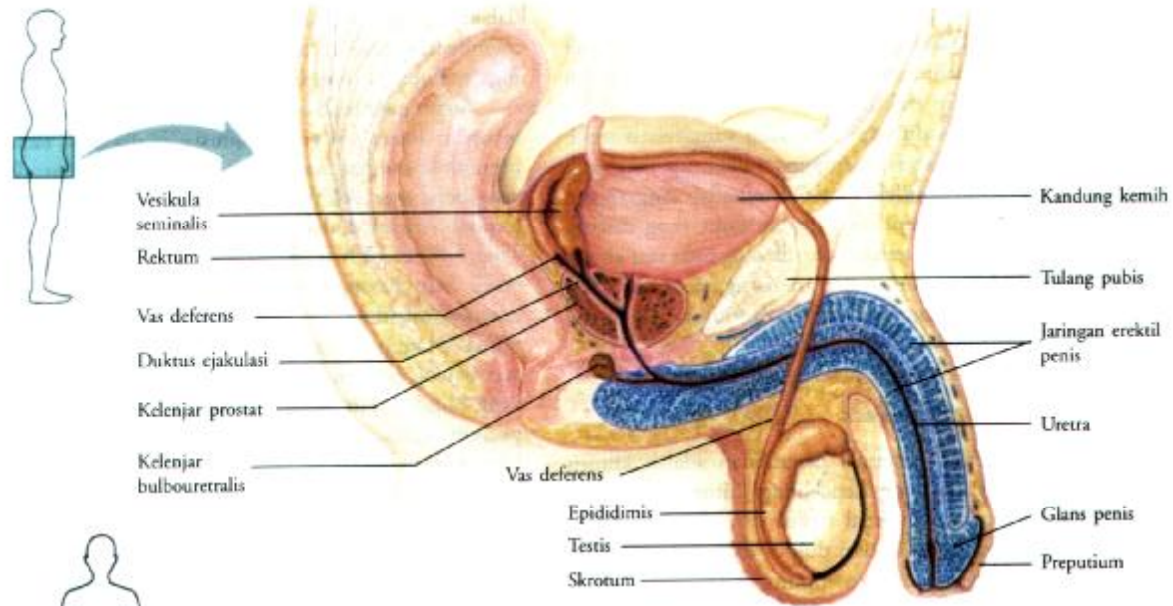
X

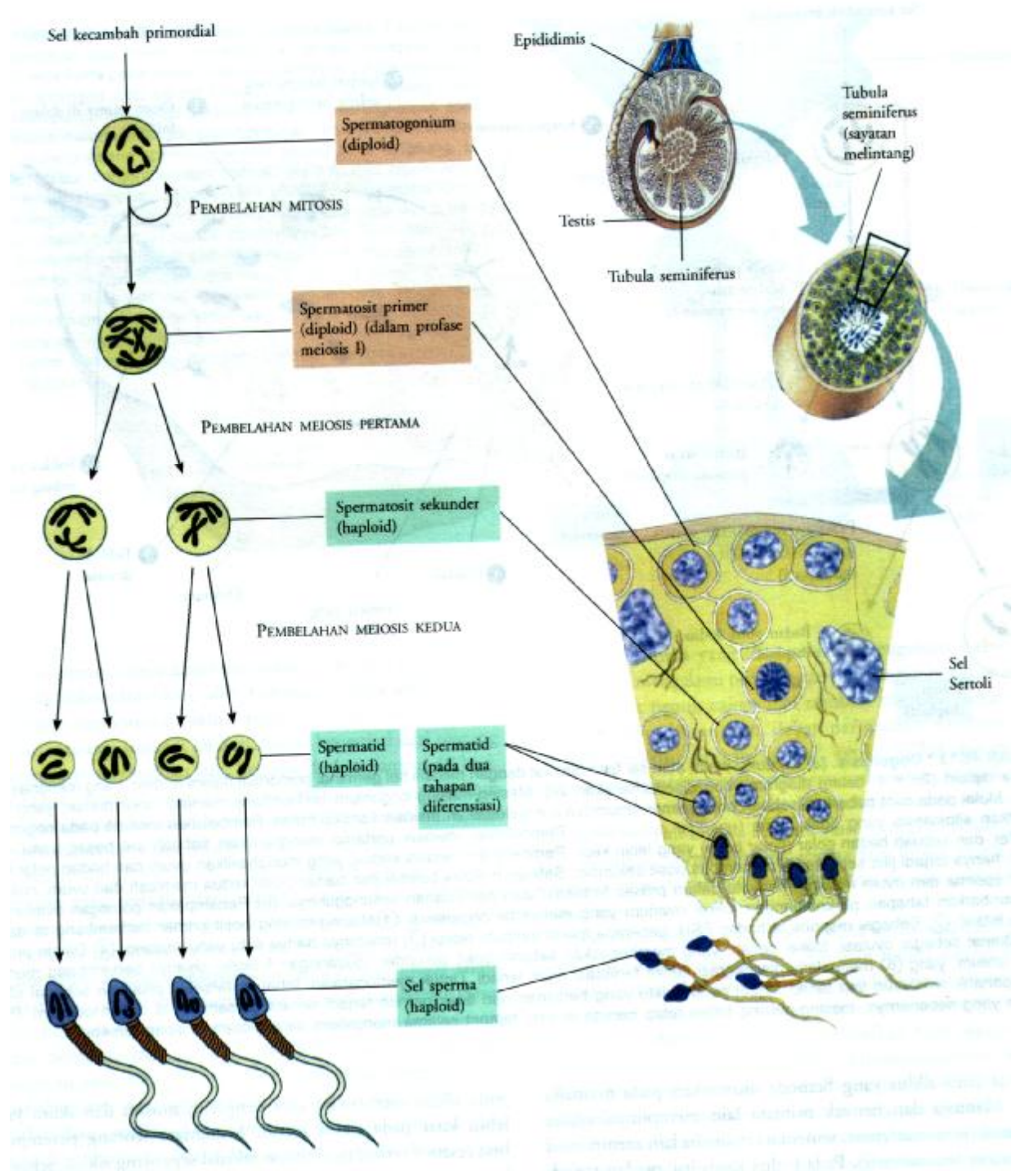
Y

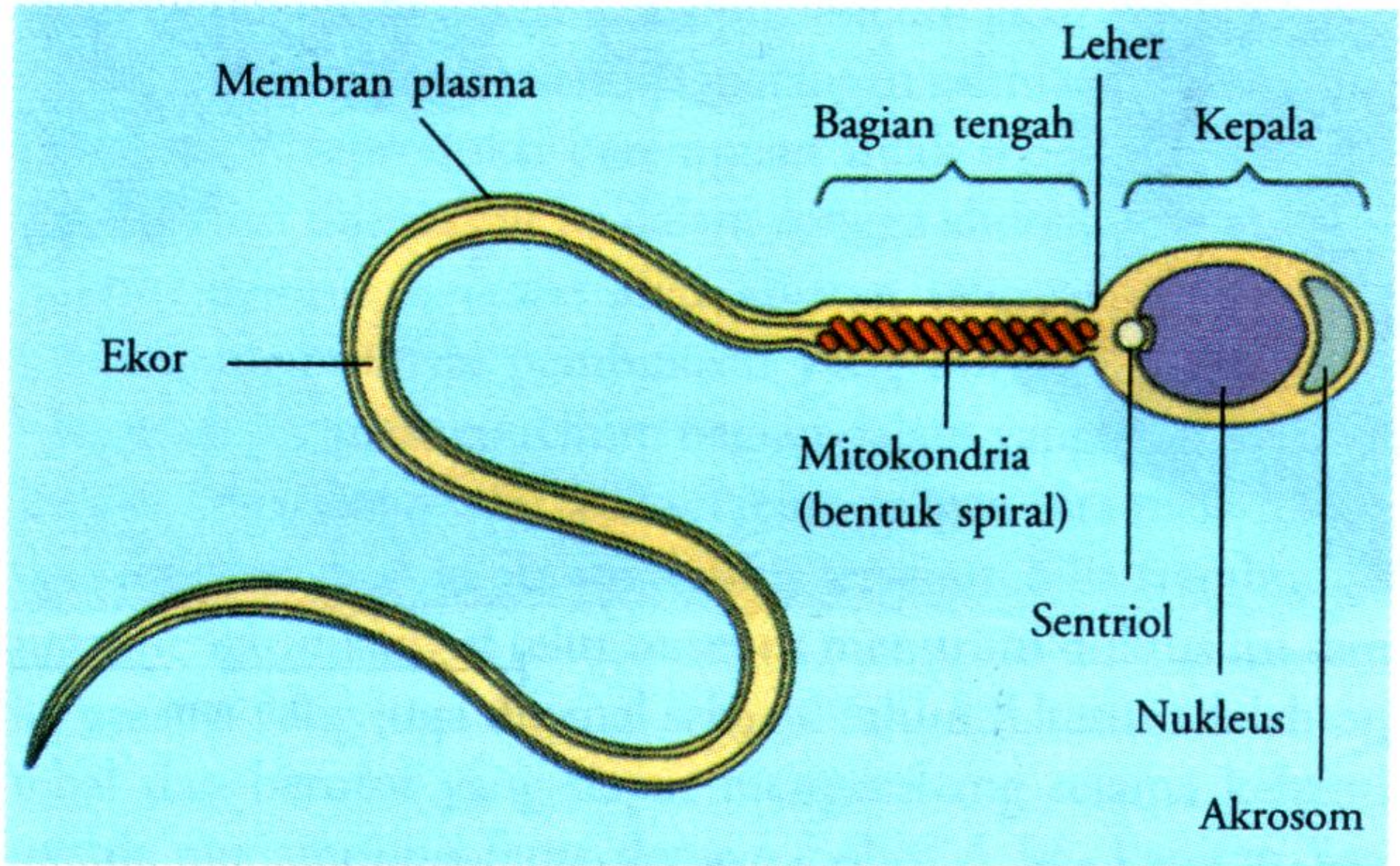


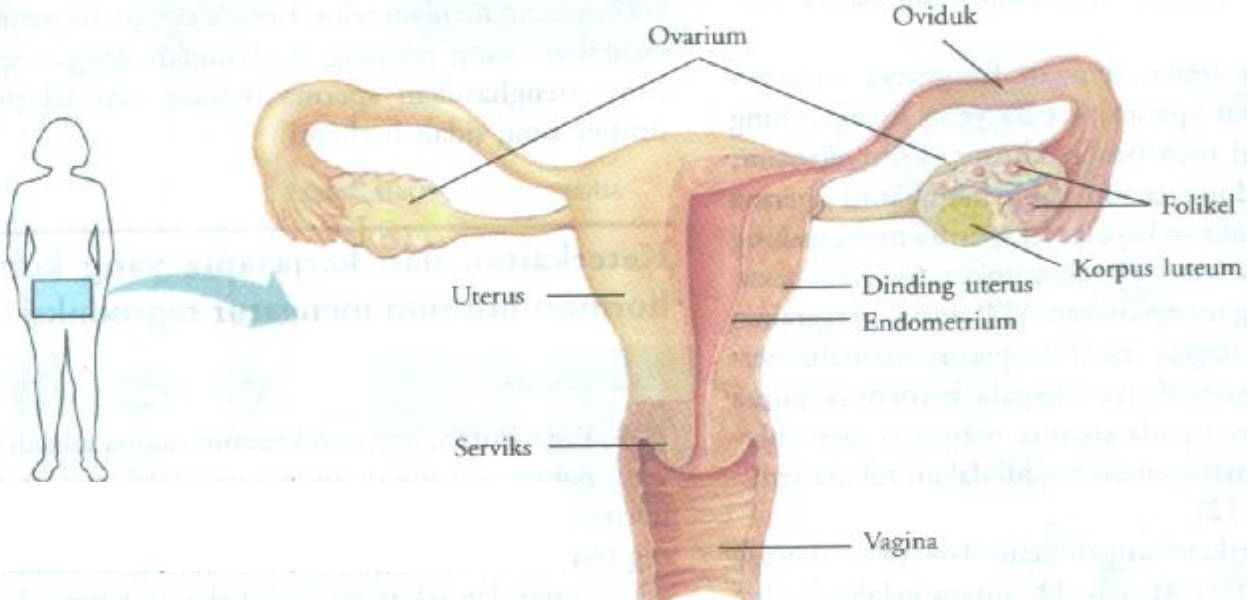
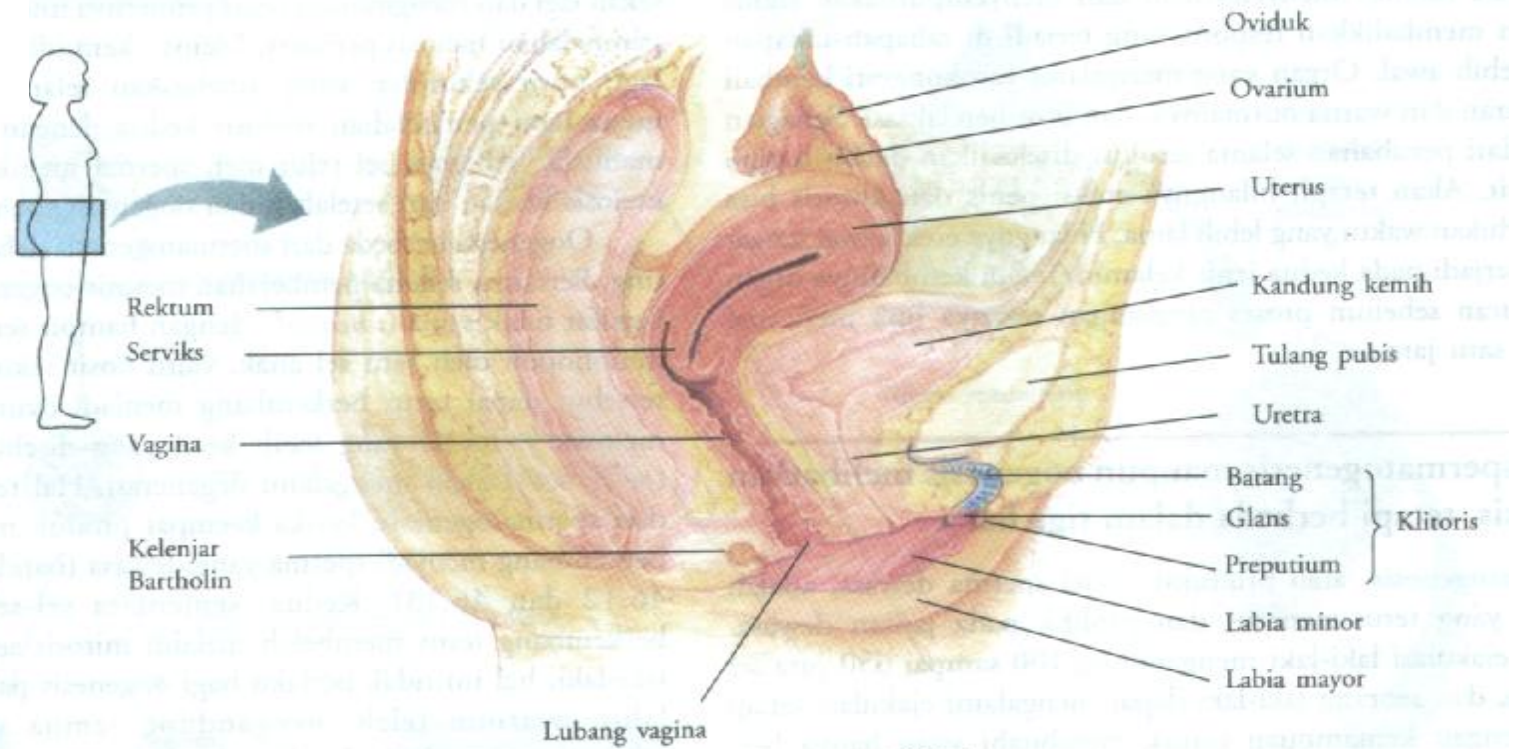
XX

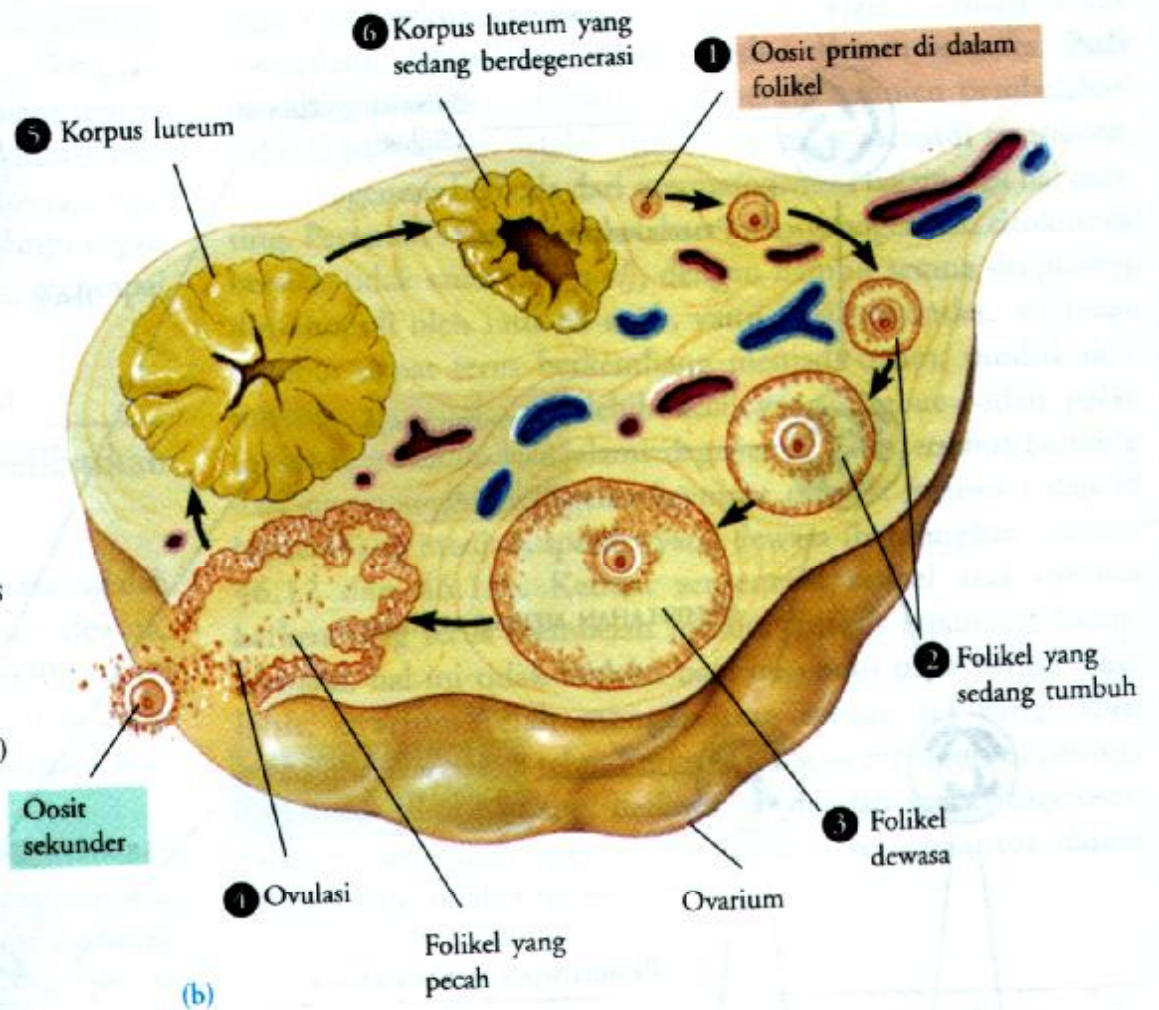
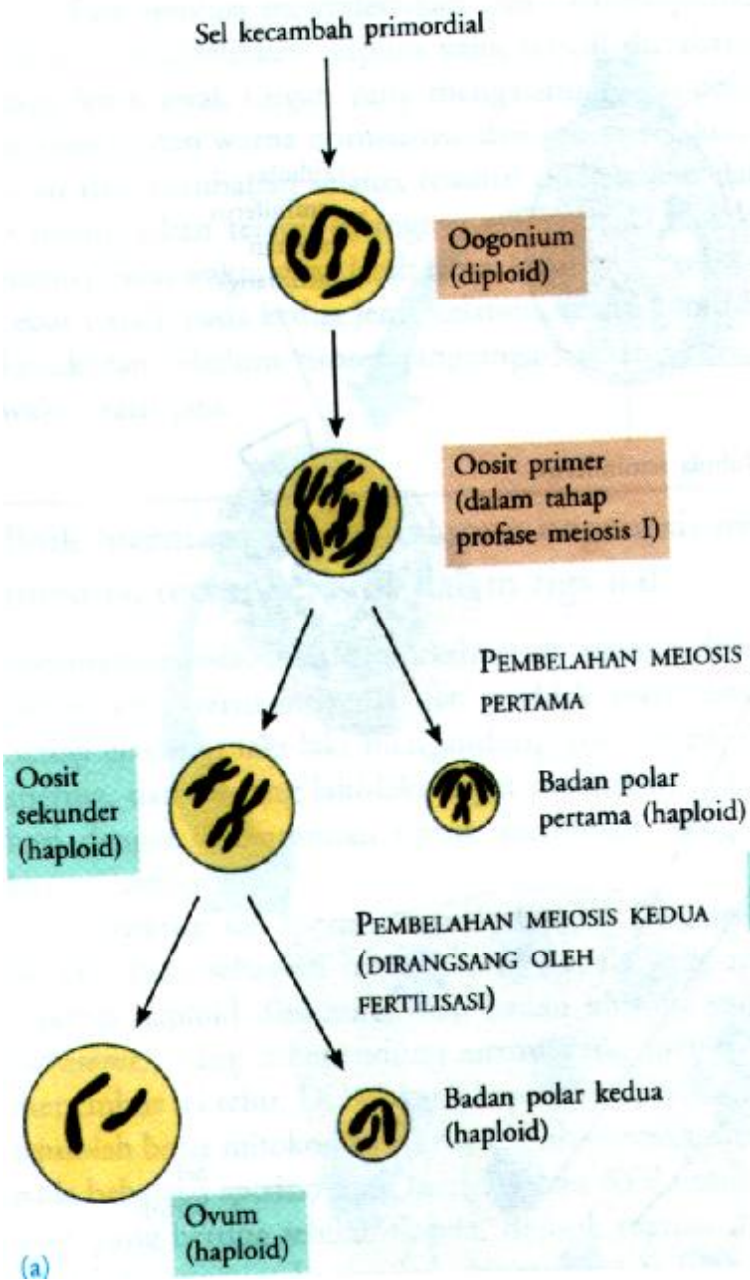
XY

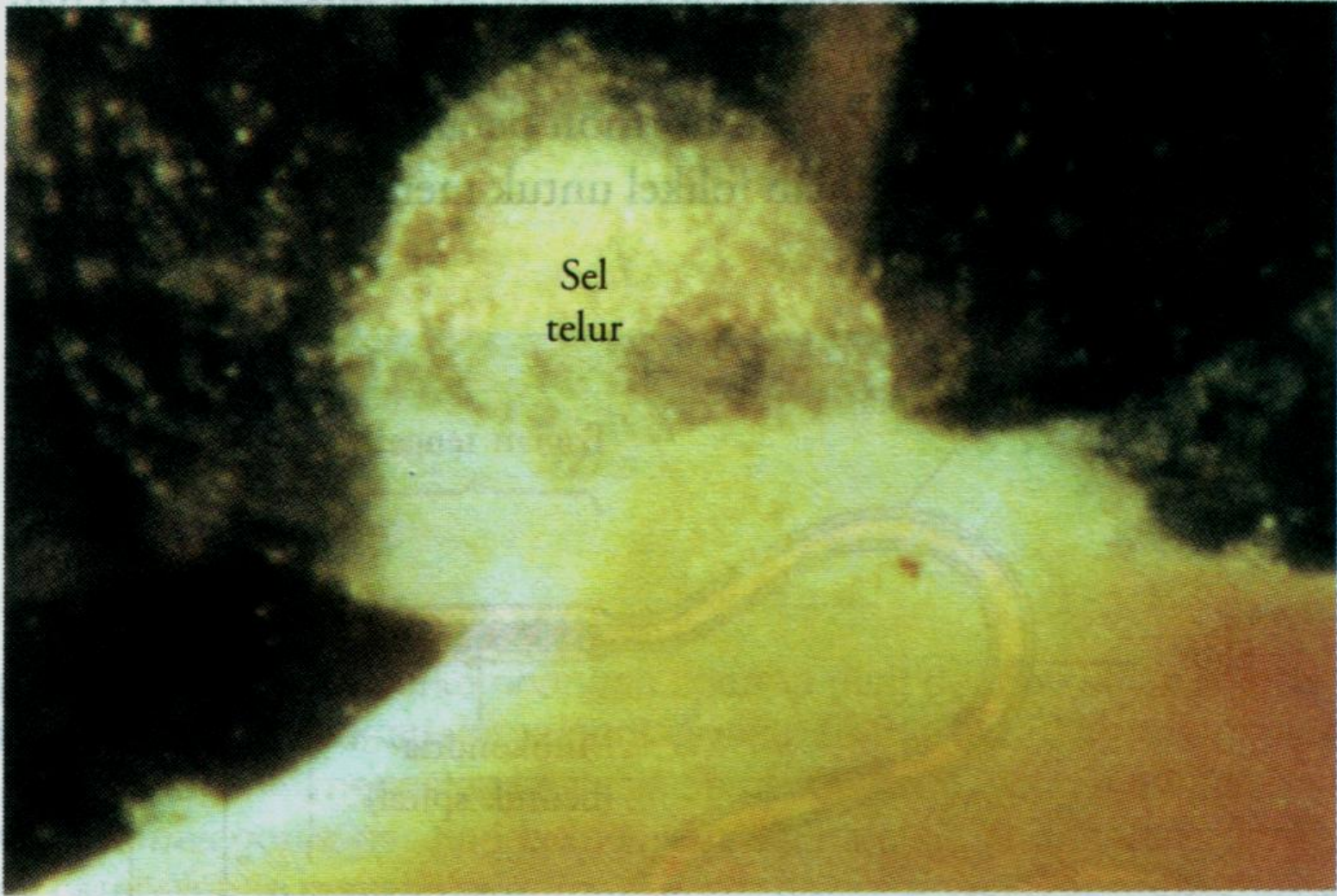






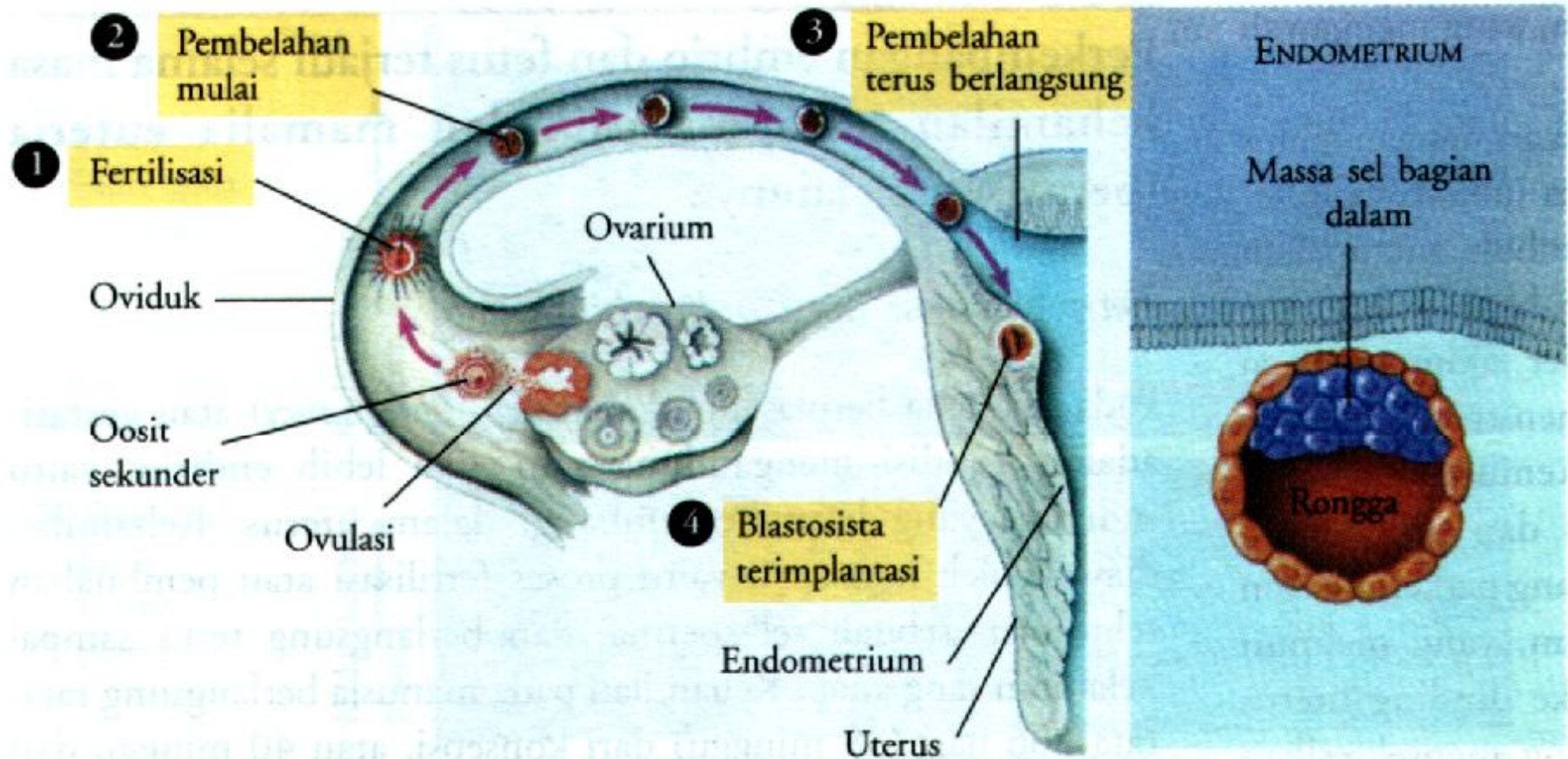






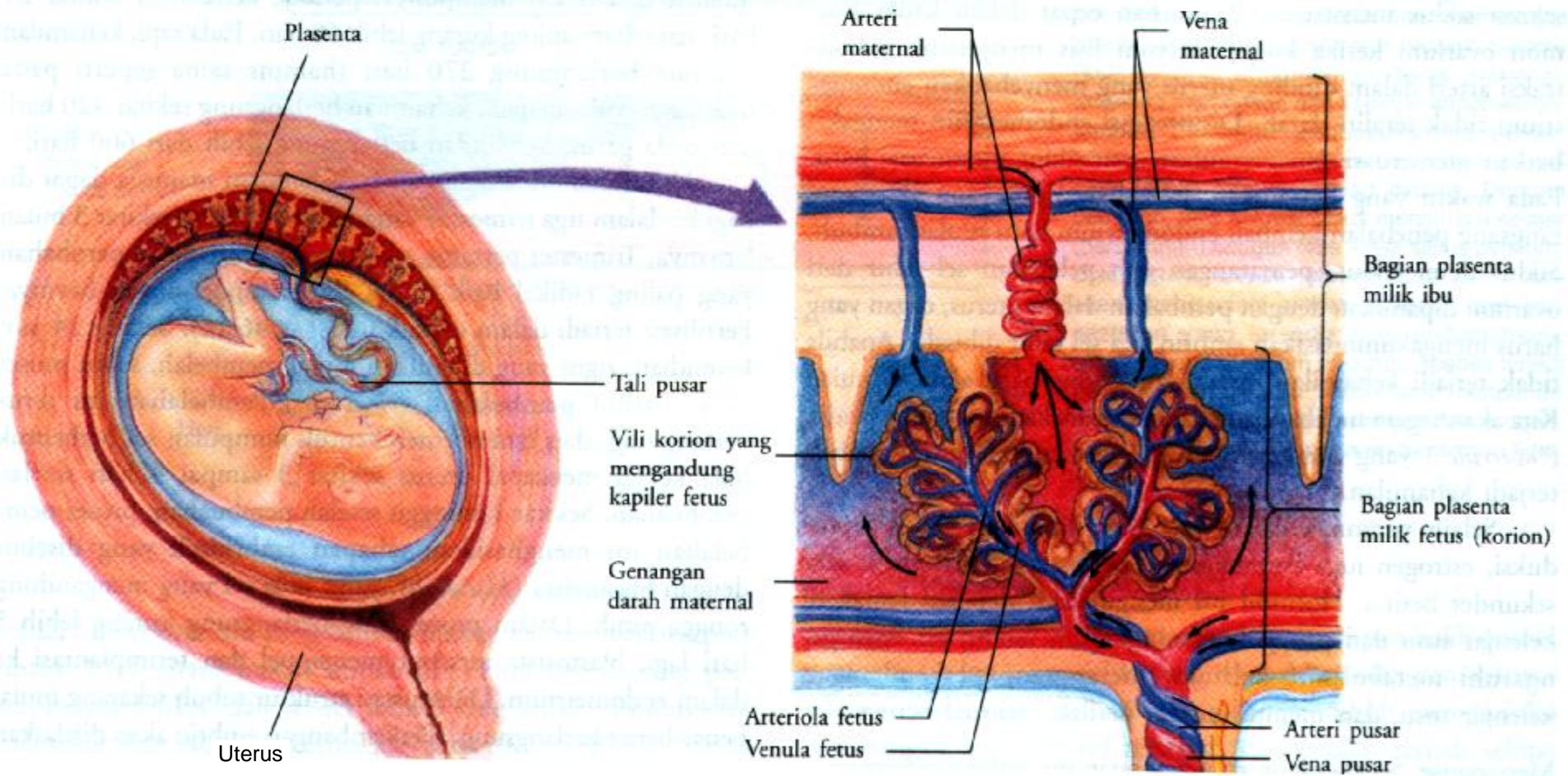
Sel
telur

0,5 mm



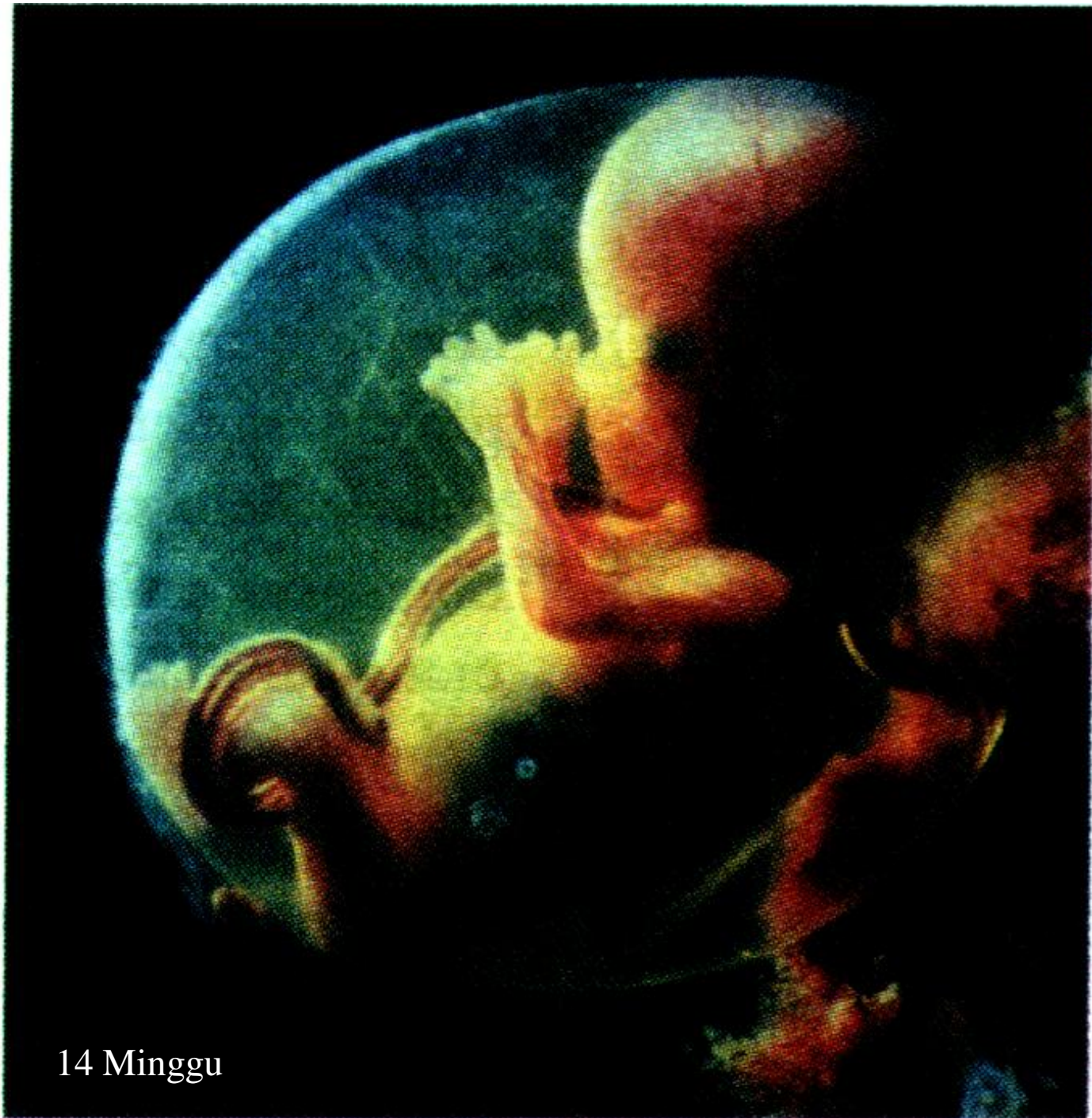
(a) Dari ovulasi sampai ke implantasi

(b) Blastosista (6 hari setelah fertilisasi)





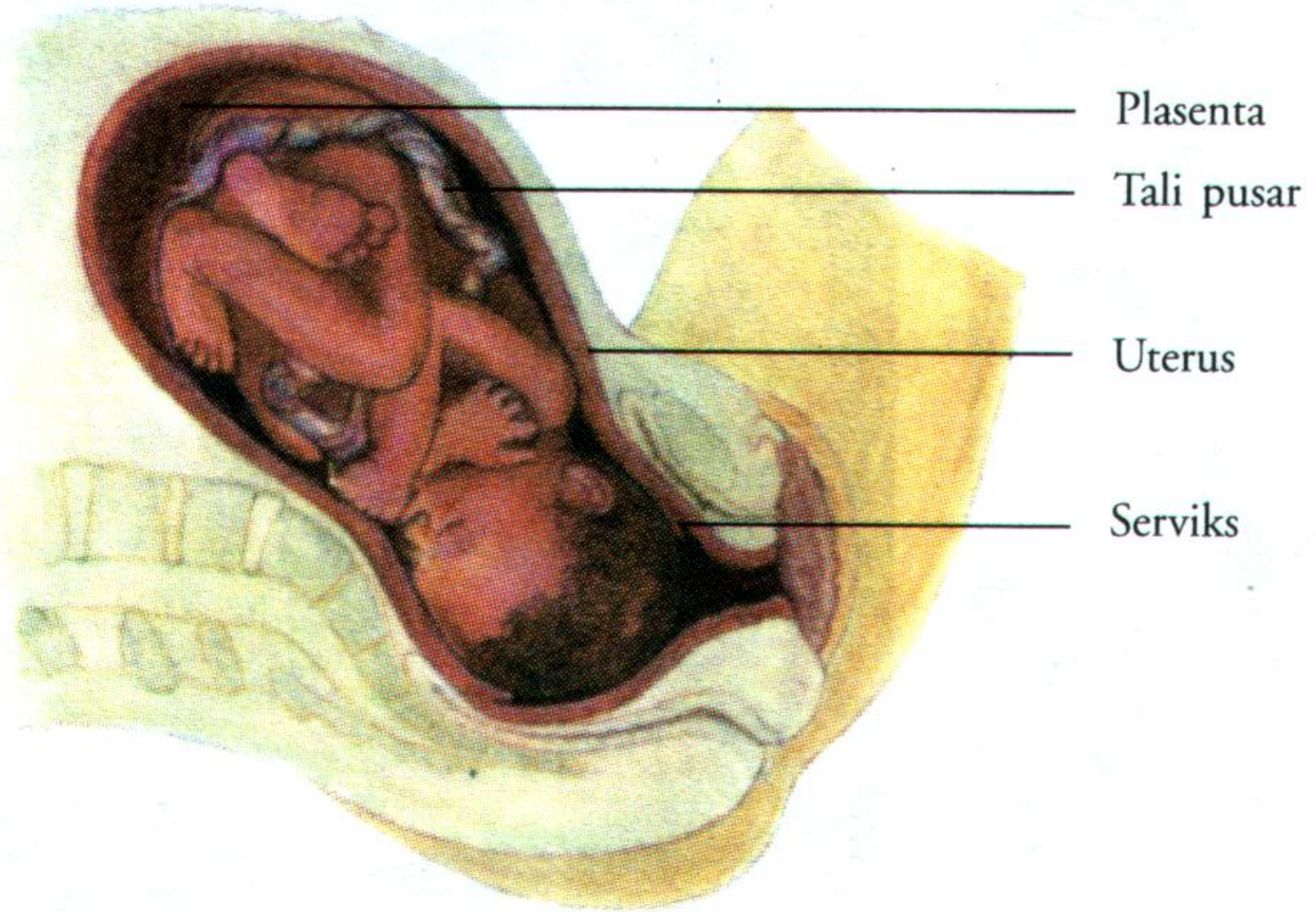
5 Minggu



14 Minggu



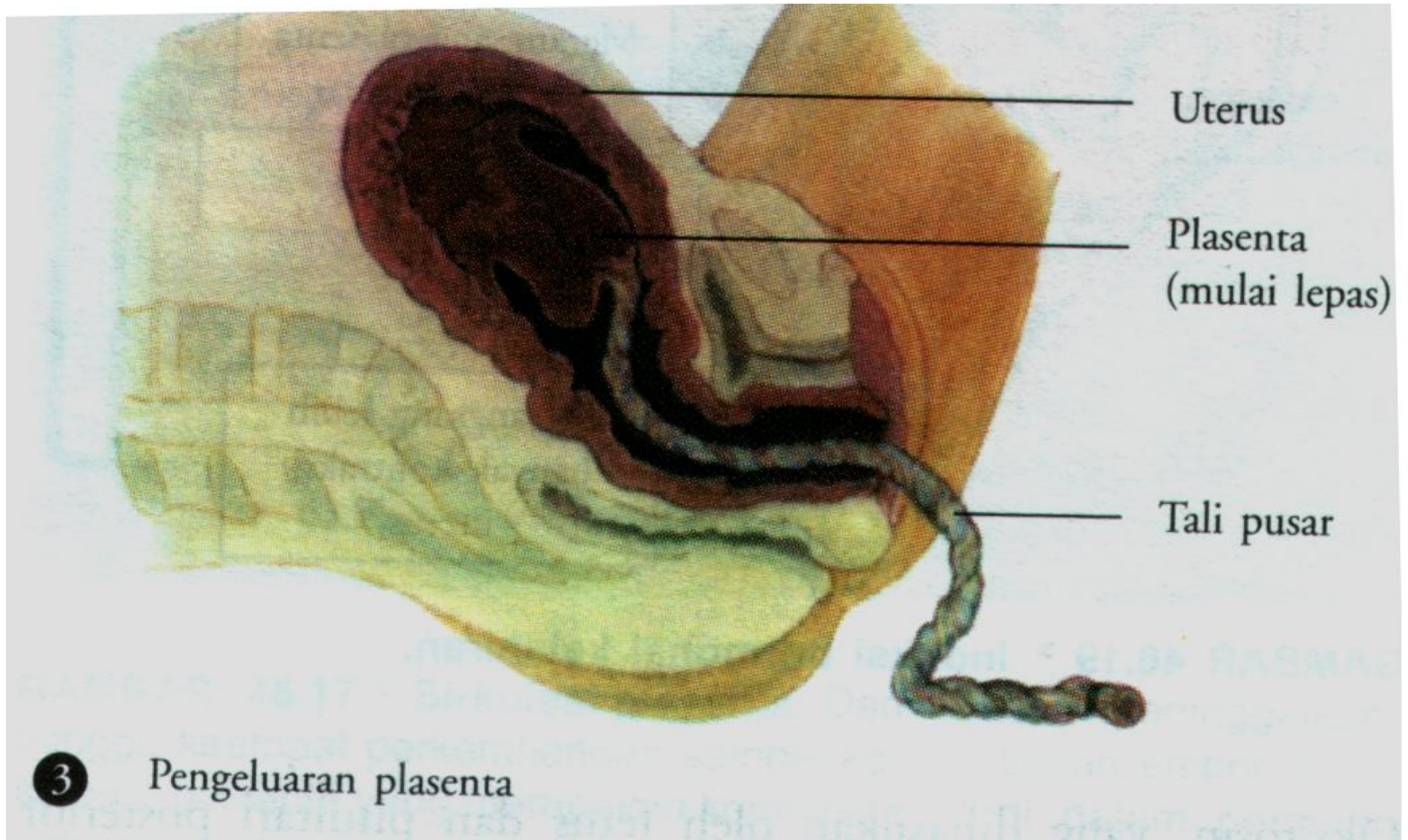
20 Minggu



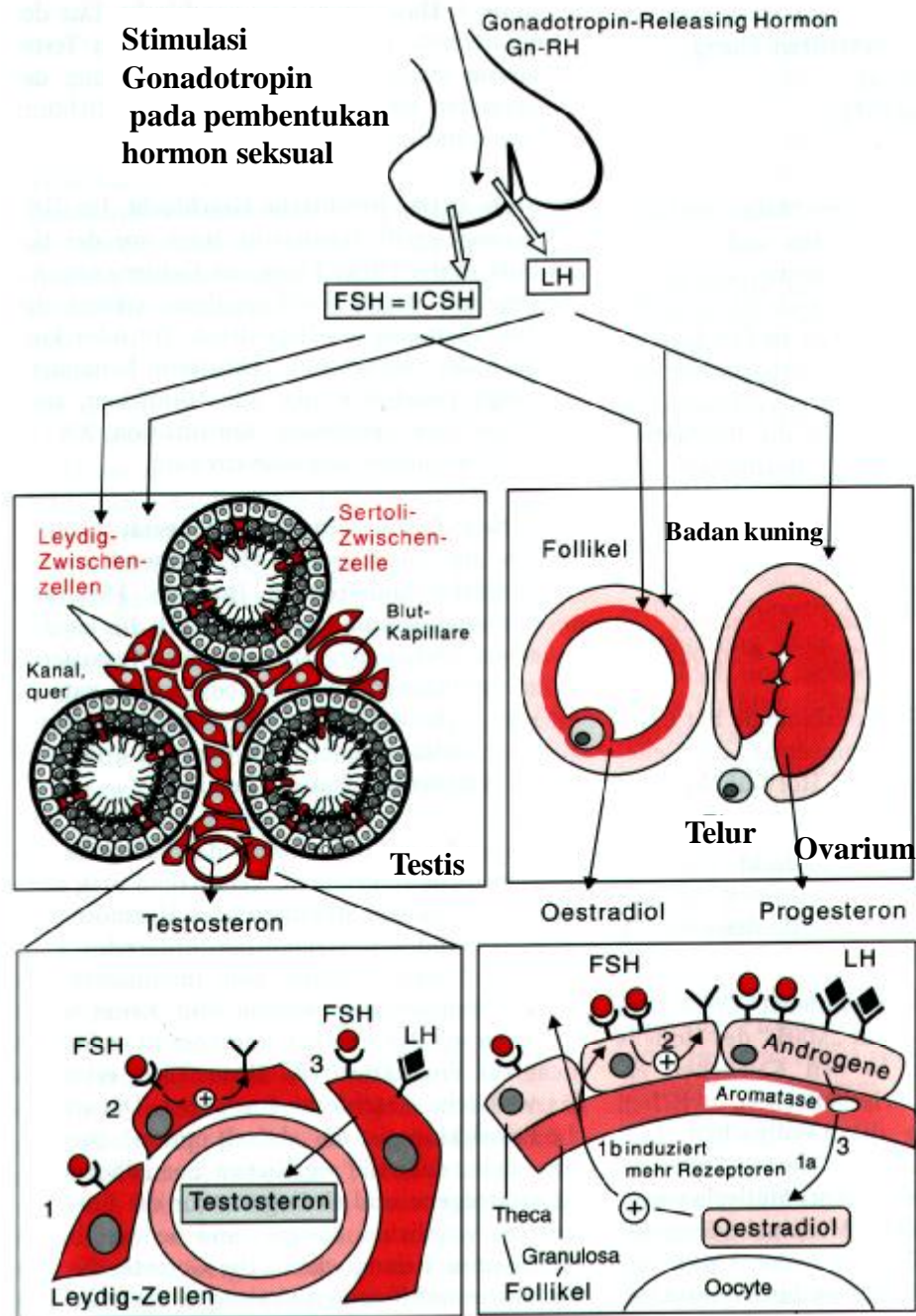
1 Dilatasi serviks



2 Ekspulsi: bayi mulai dikeluarkan



**Stimulasi
Gonadotropin
pada pembentukan
hormon seksual**



Pengaturan siklus menstruasi

GnRH = Gonadotropin-releasing Hormone

